

Lancaster CountySM

The Heart of Pennsylvania Dutch Country[®]

A celebration of food
so big it lasts all year.





Welcome to the PA Dutch Country FlavorFest™

A celebration of food
so big it lasts all year!

CONTENTS

- 2 Foodie Towns
- 6 Family Fare
- 8 Market Towns
- 11 River Towns
- 12 Shopping Indulgences
- 14 Sunday Towns
- 16 Attractions
- 28 Shopping
- 34 Dining
- 39 Lodging

Copyright © 2006 Pennsylvania Dutch Convention & Visitors Bureau.



here are few places in the world where scenes of calming beauty unfold as they do along the rolling farmlands of Lancaster County.

Amidst those miles of picturesque landscape are the fields, the farms, and the tiny factories that create some of the world's favorite foods. This is Pennsylvania Dutch Country—the Garden Spot of America—and in 2006 we're bringing our bounty center stage with Pennsylvania Dutch Country FlavorFest™, a celebration of food so big it lasts all year.

Join us as we celebrate our region's harvests, from family-style dinners and just-picked fruits and vegetables to fresh interpretations of traditional and diverse cultural cuisine. Sample special foodie events highlighting everything from whoopie pies to rhubarb, or eat your way through the county with culinary trails and learning vacations.

In these pages, you'll get a glimpse of those experiences, but the best way to really see Lancaster County is to become a part of it. Bring your friends and family and visit our farms, experience our kitchens, browse our markets, enjoy our events and attractions, spend the night, and meet the people who've made this culinary hotspot home. Our Pennsylvania Dutch hospitality and cuisine will have you feeling right at home, too. So come—and linger in Lancaster County!

ON THE COVER:
This young lady knows the joy of eating a whoopie pie, and you can too at the Whoopie Pie Festival in October. See our website for dates and details on this delicious FlavorFest Signature Event.



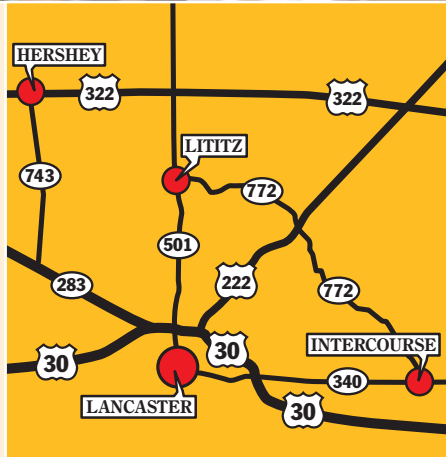


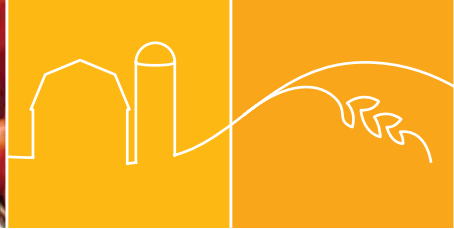
Chef Tim Carr provides a PA Dutch cooking demonstration at Kitchen Kettle Village in Intercourse, PA.

Foodie Towns



You notice the difference the minute you drive into town. Sidewalk cafés dot the streets, and roadside stands with hand-scrawled signs advertising everything from brown eggs to baked apple dumplings invite you to turn down long, winding farm lanes. These are the towns that produce the foods for which we all yearn—everything from sensational jams and jellies to those famous chocolate bars—and you immediately sense the pride people feel in creating these special treats with





that extra Pennsylvania Dutch flair. With hands-on experiences, world-famous food brands, and take-home specialties for future culinary adventures in your own kitchen—these towns are don't miss destinations for the foodie in all of us!



Founded as a country village in 1754, Intercourse is a quintessential Amish community, where buggy hitching posts stand in parking lots and farming is the talk outside general stores. Visitors mix with local Amish farmers to find top-notch foods that are favorites locally and around the globe.

For a true taste of Pennsylvania Dutch delights, spend a few hours experiencing Kitchen Kettle Village, a Pennsylvania Dutch Country FlavorFest Signature Site. Under the realm of Pat Burnley, who started a small canning business out of her garage 52 years ago, Kitchen Kettle has grown to a village of 39 shops, cafés and sampling opportunities your taste buds simply can't ignore. Visit the Jam & Relish



Kitchen to watch Amish and Mennonite women work to “put up” more than 5,000 jars of jams, relishes, and other goodies every day. Sample your way around the room, and soon you'll have your own basket full of

everything from apple butter to the current top seller, pickled beets.

Step across the street, and a familiar aroma will fill the air. You're now in front of Auntie Anne's Café, a full-menu café version of the pretzel shops born in Lancaster County and now found everywhere from Syracuse to Singapore. Wander inside for toasty sandwiches made with the famous pretzel dough instead of traditional bread, or if you're a traditionalist at heart, the original soft pretzels are here as well. Across the way, you can try your own skill at hand-twisting pretzels with a free tour and sampling at the Intercourse Pretzel Factory. You'll try authentic German-style pretzels fresh from the oven with a recipe twist that makes them extra special.

It's more than just a collection of shops—it's the food *culture* that really makes the village of Intercourse so unique. Traditions are held dear, and foods are prepared simply and heartily—where the natural flavors take priority. At Stoltzfus Meats & Deli, discover an old-fashioned butcher shop with farm-fresh meats and cheeses. Pick up some of that famous Dutch scrapple, or grab a quick lunch with a Pennsylvania Dutch hot sausage sandwich, which has become the staple of county fairs around the nation. At Intercourse Canning Company, you'll find gourmet salsas, sauces, and “Amish hors d'oeuvres” that will all find a comfortable home in your pantry.

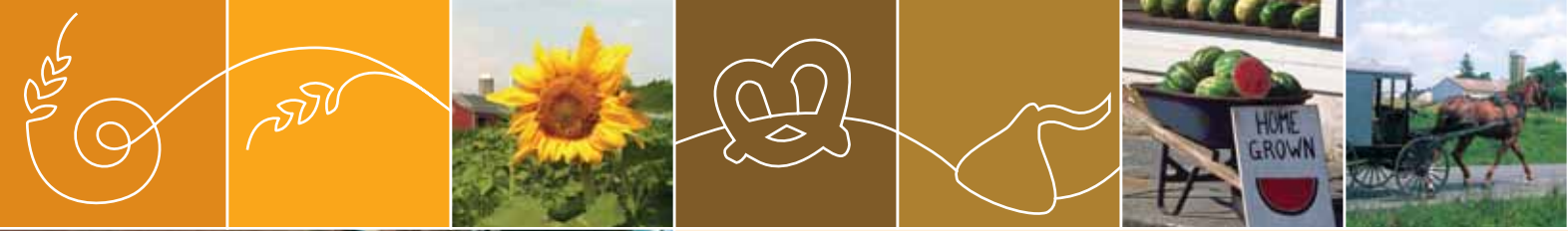
Culinary Tours Exclusive for 2006

Hop on board for a culinary adventure! Guided motorcoach tours of our Foodie Towns depart from the Visitors Center at 501 Greenfield Road—Fridays, Saturdays and Sundays, April 21st–October 29th. For tour descriptions and reservations, visit us online at www.padutchcountry.com/flavorfest or call 1-800-PA-DUTCH.

Both **Plain & Fancy Farm** and **Miller's Smorgasbord** restaurants are offering **Fresh-from-the-Kitchen Tours** that shouldn't be missed. Each includes cooking demos from authentic PA Dutch Foodies. As long as you're there, try some made-from-scratch comfort food, including chicken pot pie, baked cabbage, and shoo-fly pie. Check our website for tour times and details.



Pat Burnley, Kitchen Kettle Village founder, offers a quart of her world-famous chow chow.



At the Sturgis Pretzel Company, America's first pretzel bakery, pretzels are still baked in stone ovens.

Strolling along Main Street, your eyes will immediately lock on the enticing chocolate fountain in the window of Café Chocolate. Here, all dark chocolates are imported from sustainable cocoa farming communities in Africa and Central America, and each has a rich, deep taste you won't find at the corner store! Try a "Turbo"—that is, velvety hot chocolate laced with espresso—and you'll think you've gone to chocolate heaven.

Don't relax for long though—there are plenty more foodie experiences to try! Wander to the Sturgis Pretzel House, America's first pretzel bakery, where Pennsylvania Dutch pretzels are still baked in stone ovens just as they were 145 years ago. Take a tour of the bakery, and try out the twisting process to become a "pretzel chef" yourself!

Just a few steps away, you can fulfill your snack food craving with a little something for your sweet tooth at the Wilbur Chocolate Candy Americana Museum and Factory Store. Wilbur Chocolate, made famous by its Wilbur Buds, now produces more than 170 million pounds of superior chocolate every year for various baking, dairy and sweet goods industries around the globe. Watch skilled candy makers at work as they hand-dip marshmallows into chocolate or create nut-filled creations for the perfect gift. Stop into the Candy Americana Museum for a look at candy making from years past, and of course, taste some of those delicious Wilbur Buds. We guarantee you'll want some to take home!

Wide sidewalks and an incredible variety of shops make Lititz ideal for a leisurely stroll and a little window shopping.



LITITZ
FOUNDED BY THE MORAVIANS
LED BY VON ZINZENDORF
FOUNDED
1756

Stroll down the street in Lititz, and you'll think you've wandered right into a scene of a Norman Rockwell painting. Founded by the Moravians 250 years ago, Lititz too is a Foodie Town—home to treats known around the world and that warm, inviting feeling that's so common in Pennsylvania Dutch Country. Locals are proud of the agricultural heritage here, and they're eager to share their foodie masterpieces.

Take time to further explore downtown Lititz—you'll discover everything from a gourmet herb shop to an historic tavern dating back to the 1700s. Food is an integral part of *life* in Lititz. Whether you're reconnecting with family over a pretzel-twisting lesson or enjoying conversations with friends over chocolate fondue, you'll become a part of that world through food.



An employee dips fresh fruit and locally made pretzels in the chocolate fountain at Café Chocolate in Lititz.

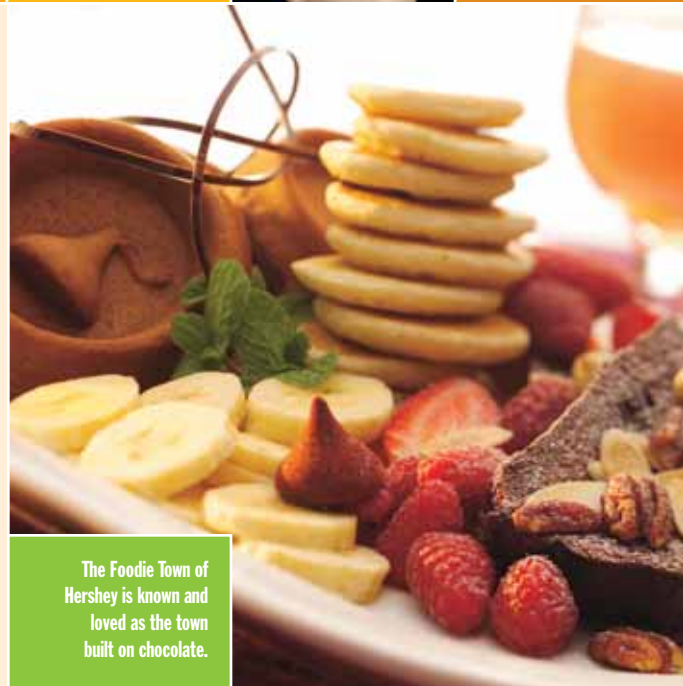


Continue your drive, and you'll land in a chocoholic's paradise, where Milton Hershey built his chocolate empire that still reigns today. With Kiss-shaped streetlights and the ever-present scent of chocolate in the air, there's no doubt you've arrived in Hershey.



As you make your way through town, the familiar brands of Hershey's, Reese's and more appear along the sides of factory buildings. Your first stop is to see just how everything has come to be with a visit to Hershey's Chocolate World Visitors Center, where you can take a free chocolate-making tour ride that shows you what goes into the process of chocolate-making. From there, become an "official" employee at the Hershey Factory Works, where you can select your very own Hershey's Kisses Chocolates or "Hersheyize" your own desserts.

Next door, the famous HERSHEY PARK offers rides, games, shows and more—all centered on those friendly Hershey's Product Characters! Mingle with the Hershey's Chocolate Bar, the York Peppermint Pattie and all of your other Hershey favorites! The newest ride for 2006 even features this Foodie Town's theme with the Reese's Xtreme Cup Challenge—the ride that finally takes on the debate of peanut butter vs. chocolate.



The Foodie Town of Hershey is known and loved as the town built on chocolate.

Hershey isn't just for the kids and kids at heart. There's luxury for chocoholics as well. Step into the chocolate spa for a cocoa massage, chocolate fondue wrap or strawberry parfait scrub. After dinner, relax with a chocolate martini and mouth-watering desserts you can't even begin to imagine.

Flavor comes alive wherever you travel in these Foodie Towns. These communities are about much more than just *creating* the products we know and love around the world. These towns and those of us who reside here *live* these foods. It's in our culture. It's part of who we are. We look forward to sharing our towns with you.

Foodie Events

The **Lititz Fire & Ice Festival** showcases more than 400 ice sculptures, an art show, block party and chili cook-off from February 16th-19th.

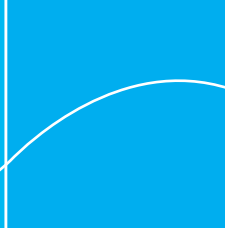
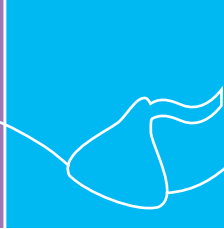
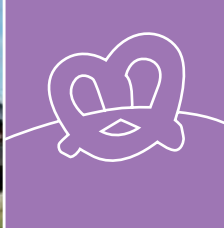
Beginning with a festival on May 5th-6th at **Good 'N Plenty Restaurant** to showcase how some of the favorite foods of Lancaster County are made, the **Seven Succulent Secrets of Lancaster County** will continue with morning and afternoon food demonstrations on the first Saturday of each month through October in the main lobby at Good 'N Plenty.

If you live for chocolate, don't miss the **Lititz Chocolate Walk** on October 7th. Artisans from the shops and boutiques all over town create and share chocolate goodies of every imaginable concoction. Locals bring containers so they can enjoy the overflow later. There's music throughout the day and you can vote for the People's Choice award.



Miller's Smorgasbord gives you a peek behind the scenes for a whole new look at PA Dutch comfort foods.





Duke the Dragon gives a hearty “high five” to a young visitor at Dutch Wonderland Family Amusement Park.



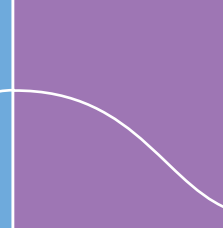
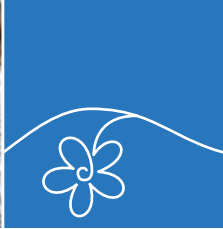
Family Fare

Here you’ll wander around our region—where childish giggles of discovery are ever-present and where huge grins and chocolate-laced smiles show the fun and excitement at every turn. In Pennsylvania Dutch Country, family fun is at the top of the menu, and with this year’s FlavorFest twist, Family Fare options are a special feast for all ages!

Dutch Wonderland Family Amusement Park was voted one of the Top 5 Best Kids’ Amusement Parks in the World—but for this



Step back in time to 16th century England at the Pennsylvania Renaissance Faire in the Shire of Mount Hope.



year's FlavorFest celebration, families can add a sweet touch to the rides, games, shows and ever-popular Duke's Lagoon. It's a Dutch Wonderful year with "Seasons of FunFabulous Food," an opportunity for some fantastic food making for young chefs-to-be. Check out our website for the exciting details on these food-making events for the entire family throughout the year.

If your family is looking for more of a back-to-basics focus for FlavorFest fun, you need look no further than our exciting farm stay B&Bs. A bed and breakfast experience for even the youngest visitor, these special stays show exactly where those fresh foods come from. Click on the "working farms" lodging page on our website for a complete list of farm stay opportunities, where your FlavorFest stay will be a learning experience you'll never forget!

At Cherry-Crest Farm, kids of all ages will have a great time while learning a little something about agriculture.



Get lost...literally...in FlavorFest fun with a trip to Cherry-Crest Farm. Here, those towering corn stalks act as walls—and obstacles—as you collect clues to maneuver through a giant walk-through maze. Once you've successfully navigated the course, check out a petting zoo, farm wagon rides and other fun agritainment experiences, plus FlavorFest specialties like roasted sweet corn samples or beehive observations. Nearby, the Country Barn Farm Market features family fun with pick-your-own pumpkins in season, a petting zoo and much more! Country Barn now also features its own corn maze and even a hamburger farm—check our website to find out all the FlavorFest details!

If you're searching for heartier family fare from years past, get thee to merrie olde England, where the Pennsylvania Renaissance Faire's interactive entertainers serve up everything from open pit beef to rousing displays of medieval jousting and royal regalia. Enjoy it all complete with a hearty turkey leg—don't worry, a gallant knight or serving wench will ensure you're using the "proper" eating etiquette!

Of course, no Family Fare activities menu would be complete without a visit to the town built on chocolate, and at Hershey's Chocolate World Visitors Center, you can top off a FlavorFest experience with some sweet sampling. Surrounding Chocolate World, take a chocolate-themed spin on any of the thrilling rides of HERSHEY PARK, where from coasters to carousels, it's all about the perfect blend of chocolate and camaraderie—the perfect Family Fare for your troupe's Pennsylvania Dutch Country FlavorFest weekend.



Mini Golf is Maximum Fun at Village Greens

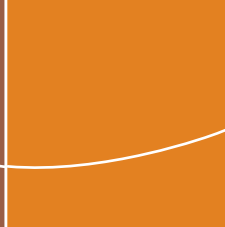
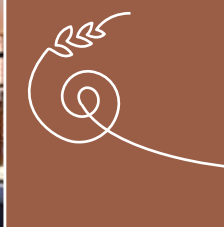
Village Greens near Strasburg is among the best, most challenging mini golf courses in the country. Its two courses, spread out over 13 acres, were included in *Sports Illustrated* magazine's "Summer Must-Do" list, and "takes the experience to the next level," according to *SI*. In addition to its intriguing hole arrangements, the course is a virtual arboretum.

Family Fun Getaway Package!

The Family Fun Getaway package includes overnight accommodations, a PA Dutch dinner, plus your selection of attractions including HERSHEY PARK, DUTCH WONDERLAND, or Strasburg Rail Road. Book it now by calling 1-800-PA-DUTCH, and press 1 for lodging package reservations.

HERSEYPARK is a world-class amusement park with more than 60 rides and attractions, including 10 roller coasters.

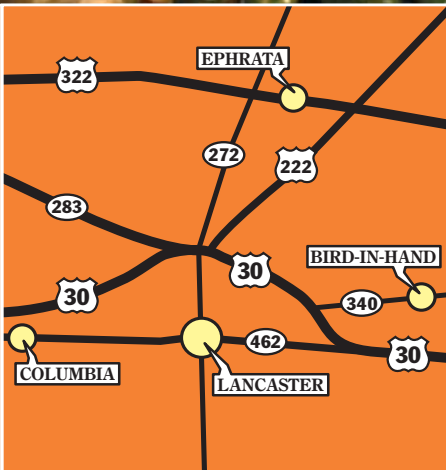




Shop for everything from fresh meats and cheeses to just-picked fruits and vegetables at the historic Lancaster Central Market.



Market Towns



Lancaster County is the Garden Spot of America, and nowhere else is that more evident than at our glorious farmers' markets. Before the sun even rises, their passageways are alive with the radiant colors of rows of fresh tomatoes, peppers, and apples, the smells of just-out-of-the-oven breads and cakes, and the sounds of farmers happily greeting their customers for the day. Here the foods are picked-that-day fresh, the conversations are neighborly, and the character is undeniably welcoming. It's that same character that flows all through the towns that these markets



Master chefs create gourmet masterpieces with local ingredients and fresh interpretations of traditional PA Dutch recipes.

gem, Central Market offers locals and visitors the opportunity to buy everything from fresh-from-the-farm meats and produce to locally made artisan cheeses, delectable desserts, and even creations made from special family recipes from around the world. Open every Tuesday, Friday and Saturday, some of the stands have been “on market” for generations, welcoming visitors and locals alike with fine fresh cuisine and a friendly smile.

Take some time to further explore the streets and alleyways that branch off from the historic Market building. Within just a few steps are everything from the Lancaster Quilt & Textile Museum, housing one of the finest collections of antique Amish quilts, to the Fulton Opera House, known as America’s oldest living theater, and the Demuth Tobacco Shop, the oldest tobacco shop in the United States, where you can still get a hand-rolled cigar! The FlavorFest traditions that are so alive at Central Market also reign throughout the city, from the local microbrews at the Lancaster Brewing Company to the gourmet masterpieces created from local ingredients at Carr’s Restaurant. Enjoy fresh local produce and free-range poultry in a whole new way with the fresh interpretations at local restaurants, many featuring the same fresh ingredients you find at Central Market.

You’ll see firsthand why this historic Market Town is so unique.

call home—they’re the Market Towns that offer a truly fresh taste of all Pennsylvania Dutch Country has to offer.

The original and biggest of these Market Towns has quite a history of its own. Lancaster is America’s oldest inland city and was even the nation’s capital for a day in 1777 when the Continental Congress met downtown. Fitting perfectly into that history is Lancaster Central Market, the nation’s oldest continuously-operating farmers’ market, which has been offering fresh meats and produce since 1730. Today, housed in a magnificent 1889 Victorian

LANCASTER CITY
 OLDEST INLAND TOWN IN THE UNITED STATES
 FOUNDED 1730

The Fulton Opera House in downtown Lancaster is one of only eight theatres to be named a National Historic Landmark.



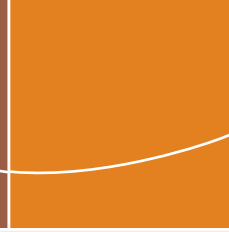
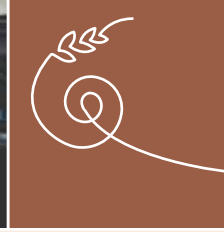
Market Basket Trail and Ale Trail

Lancaster County is called the **Garden Spot of America**, and nowhere is that more evident than at the region’s farmers’ markets! Start exploring the **Market Basket Trail** right in Lancaster. From week-to-week and season-to-season, you’ll get a fresh taste of PA Dutch Country. The 45 varieties of apples that grow at **Cherry Hill Orchards** is reason enough to grab a basket. And “if you can’t buy it at the **Green Dragon**, it chust ain’t fer sale,” the locals say.

The **Ale Trail** includes an old tobacco warehouse known as the **Lancaster Brewing Company**. Stop by for a pint of Amish Ale or Milk Stout, or a Hop Hog IPA.

Visit our website for details on all of our culinary trails!

PA Dutch Country 2006 FlavorFest™ MARKET BASKET TRAIL



At the Bird-in-Hand Bakery, traditional PA Dutch recipes like wet-bottom shoo-fly pie are still made from scratch.



BIRD-IN-HAND

NAMED FOR A PICTURE ON OLD HOTEL'S SWINGING SIGN

FOUNDED 1734

Travel out of the city along scenic byway Route 340, and you'll soon arrive in the quaint village of Bird-in-Hand, which has been providing rest and refreshment to travelers for years. At the center of it all is the Bird-in-Hand Farmers Market, a mecca for hand-rolled Pennsylvania Dutch pretzels, fresh produce, local crafts, and a countless supply of those colorful Pennsylvania Dutch jams and jellies. Sample the day away on homemade fudge, smoked meats, or Pennsylvania Dutch funnel cake as you rub shoulders with local Amish farmers offering the harvest of farms just down the road.



The Lancaster Quilt & Textile Museum houses one of the finest collections of antique Lancaster County Amish quilts.

COLUMBIA

FORMERLY WRIGHTS FERRY RENAMED AFTER REVOLUTIONARY WAR

FOUNDED 1726

Once hailed as the gateway to the west, the river town of Columbia makes its home along the Susquehanna River with quaint shops, unique museums, and the Columbia Market, Lancaster County's most recent addition to the farmers' market scene. At this restored riverside market you'll find fresh produce from local farms, local crafts, and even wines made from grapes grown along the banks of the mighty Susquehanna.

EPHRATA

CONRAD BEISSEL ESTABLISHED A RELIGIOUS COLONY HERE

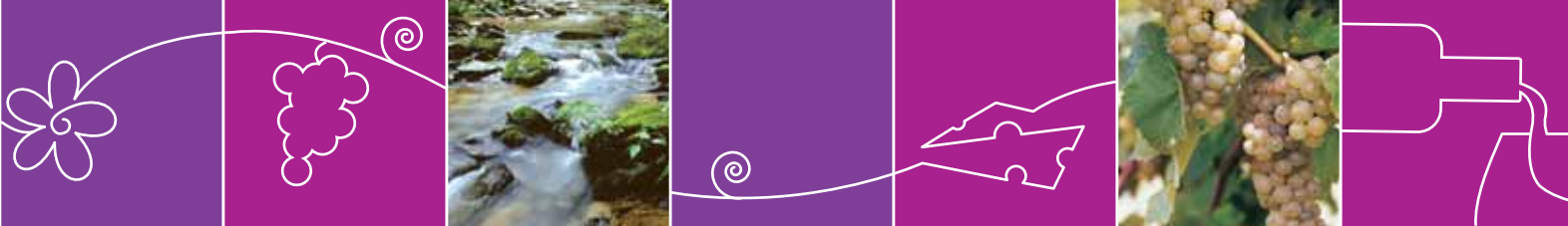
FOUNDED 1732

"If you can't find it at the Green Dragon, it chust ain't fer sale!" So say the regulars at the Green Dragon Farmers Market & Auction in northern Lancaster County just outside the borough of Ephrata. These folks should know—they and others like them have been gathering at this farmers' market every Friday since 1932! Each week, more than 400 growers, merchants and craftsmen offering everything from funnel cakes to livestock gather here to offer the best goods around to locals and visitors who know of the Green Dragon's foodie treasures.

Town to town, these Market Town masterpieces will ensure your basket is full when you depart. Visit our website and download the *Market Basket Trail* to take the grand tour of these Market Towns and the other areas that bring the fresh bounty of Pennsylvania Dutch Country to you. Along the way, you'll meet the growers, the chefs, and the neighbors that bring that agricultural heritage and foodie culture to life. We're looking forward to meeting you!

Cylo, mascot for the Lancaster Barnstormers, entertains some of the younger fans at Clipper Magazine Stadium.





River Towns



River outfitter Shank's Mare can provide everything you need to enjoy a day on the Susquehanna River.



The mighty Susquehanna River is a vibrant corridor for all kinds of wildlife. Eagles make their nests in trees on river islands, river otters and muskrats can be seen along the shorelines, and small mouth bass, catfish, and carp reside beneath the river's watery surface. The Susquehanna is also an amazing agricultural resource for Pennsylvania Dutch Country. Enjoy a weekend of birding, cross-country skiing, hiking or picnicking along the Susquehanna, and see for yourself its majesty. Make a visit to Pennsylvania Dutch Country River Towns for a unique look at the people and products that call the river home.

Rich in heritage and beauty, much of the town of Marietta has been declared a National Historic District. Quaint antiques shops surround beautiful and painstakingly restored homes, many of which now also serve as fine dining restaurants or B&Bs. Just down the road is Nissley Vineyards &

Winery Estate, which produces more than 25 varieties of wine and offers complimentary self-guided tours and tastings. Stop by on summer Saturday evenings for "Music in the Vineyards," which lets you enjoy great music, great wine and great friendship on the lawn.



More than 12,000 treasures of time, from Stonehenge to today's technology, can be found at the National Watch and Clock Museum.

Pause just outside Marietta to admire the spectacular views over the river at Chickie's Rock Park before venturing south to Columbia, known for its Thursday farmers' market, antiquing and its historical role as an important stop along the Underground Railroad. Take some extra time to enjoy this river town with a special "Savor the Susquehanna" getaway weekend of outdoor adventure, fine dining, wine tasting and more. Visit our website for details on this amazing weekend experience that'll give you an entirely new outlook on the Susquehanna and all it has to offer.

Cross the Susquehanna to the village of Wrightsville, a riverside community rich in tradition and history. Wander up the hill to enjoy wines with a spectacular river view or special food and wine pairing evenings at Moon Dancer Vineyards & Winery. Or, drive right along the river's edge until you arrive at Shank's Mare Outfitters, a one-stop shop for kayaking, canoeing, hiking, snowshoeing or anything else to perfect your outdoor Susquehanna adventure.

Not far from the river, enjoy other parks and nature preserves with spectacular access to the Susquehanna. Visit us online to learn more about wonderful learning opportunities and how you can get involved to see what these towns and others have to offer you!



Pack a picnic basket and enjoy live music at Nissley Winery's Saturday evening summer lawn concert series.

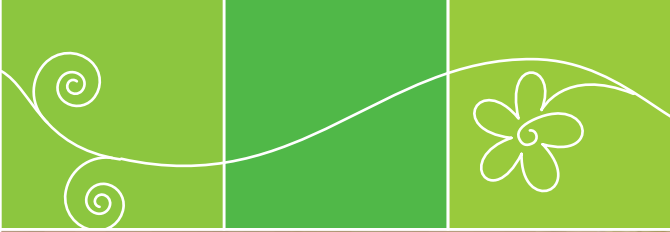
Learning Never Tasted So Good!

See the river and its glory with special "Savor the Susquehanna" learning vacations! Available June–October, this marvelous getaway gives you the chance to experience these river towns through wine tasting, an educational paddle tour on the Susquehanna courtesy of **Shank's Mare Outfitters**, fine dining, and nights in a cozy **Bed & Breakfast**.

Deutches KucheVernuggen (Pleasure in the German Kitchen)—May 4th–6th at the **Harvest Moon Bed & Breakfast** in New Holland is filled with fine dining experiences, live German music, a Bavarian cooking demonstration, informative tours and more to help you discover Lancaster's deep German heritage and its contribution to the culinary flair of Lancaster County.

See our website for information on these and other unique Learning Vacations.





Indulge your passion for shopping at the new Pottery Barn Outlet, one of more than 120 stores at Rockvale Outlets Lancaster.



Shopping Indulgences

I'm sure you'll agree—we *all* love to indulge a little, whether with a sweet dessert or a shopping spree. Here in Pennsylvania Dutch Country, you can do it all, and each little luxury has a FlavorFest twist that's all its own. Enjoy a gourmet dinner for two by candlelight, splurge on a day at the spa or take advantage of some of the best shopping you'll find just about anywhere—at amazing prices to boot! Any way you enjoy, choose to indulge a little in Pennsylvania Dutch Country, FlavorFest-style—you may find this bit of pampering is just the thing you needed!

Top designer names, fine art and just that *feeling* of high class—it's the perfect combination of luxury and romance with

a weekend at Doneckers, the ideal way to satisfy your shopping tooth. Doneckers, a rare gem nestled in Ephrata that sparkles year round, is a complex of luxury rooms and suites, dining, shopping and more. Whether you hunger after fashion, furniture, fine art or luxury weekends away from it all, you're sure to feel like royalty from the moment you step through the door. Take some time to explore the entire Doneckers community in historic Ephrata, but be sure to save time to visit the Restaurant at Doneckers for an amazing lunch or dinner of exquisite French cuisine and more than 670 selections from the wine cellar. For an added FlavorFest twist, enjoy special Chef's Tastings menus for a little nibble of many culinary masterpieces.



Whether shopping, dining or relaxing in luxury, you're always the center of attention at the Doneckers Community.



locally grown ingredients fresh from the farm! Try the romantic Carr's downtown for designer dishes with local ingredients, or enjoy the historic atmosphere of Olde Greenfield Inn, located in a 1780

If your palate yearns for designer names without the price tag to match, look no further than Rockvale Outlets Lancaster, home of more than 120 brand name stores including Pottery Barn, Lenox, Waterford and more. The guys will love a stop at the Eagles End Zone—the only offsite Philadelphia Eagles retail store! Just down the road, Tanger Outlet Center features 60+ stores for bargain hunters with designer names like Coach, Liz Claiborne, Banana Republic and many more. Your shopping bags will feel like you've just feasted the day away on bargain after bargain. Check out our website for even greater savings with special offers, merchant tent sales, special events and more!

All that shopping is sure to build an appetite, so relax with a glass of wine and a gourmet meal at one of Lancaster County's amazing restaurants—many of which feature

Pennsylvania farmhouse not far from these shopping meccas. Nearby, the Log Cabin Restaurant is where you can savor warm atmosphere and classic American cuisine, and Mazzi Designed Dining offers an eclectic menu created and served as an art form. Make it a weekend and enjoy the AAA 4-Diamond accommodations next door at Leola Village Inn and Suites, complete with in-room antiques and luxury in restored buildings from the 1800s.

But this isn't the only way to satisfy your indulgences for a little luxury. At the Inn and Spa at Intercourse Village, an adorable B&B and spa in the heart of the Amish countryside, you can enjoy a pampering massage as you hear Amish buggies clip clop down the street, or relax in an enormous Jacuzzi tub just right for that romantic weekend away. Just down the road, the Netherlands Inn and Spa offers similar indulgences. After a day of shopping, enjoy a fine dinner in the Bistro or a spa package at Spa Orange, the perfect way to replenish and refocus after that day of shopping indulgences. You can even take advantage of special FlavorFest Full Moon Dinners, complete with local meats, produce and poultry that reflect our surrounding farm heritage.



Treat yourself to a deeper level of relaxation and restore your spirits at the Netherlands Inn & Spa.

Every Moon is a Harvest Moon

Appropriately following the Farmers' Almanac, **The Bistro** at the Netherlands Inn and Spa celebrates the full moon with special themed **Full Moon Dinners**. Each month the Inn's executive chef will create a 4- or 5-course meal based on the month's Native American full moon name and theme. The event showcases the chef's creativity, and the use of local produce reflects Lancaster County's rich farm heritage.





Take a relaxing ride through Amish farmlands aboard America's oldest short-line railroad at the Strasburg Rail Road.



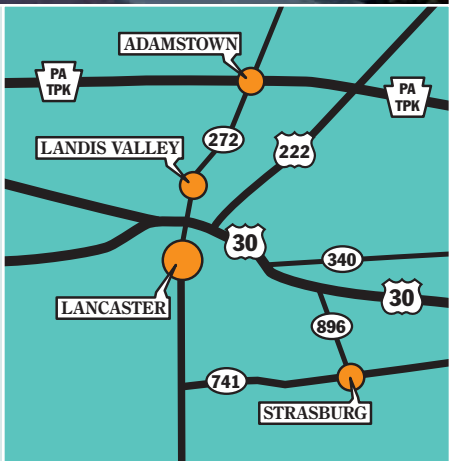
Sunday Towns

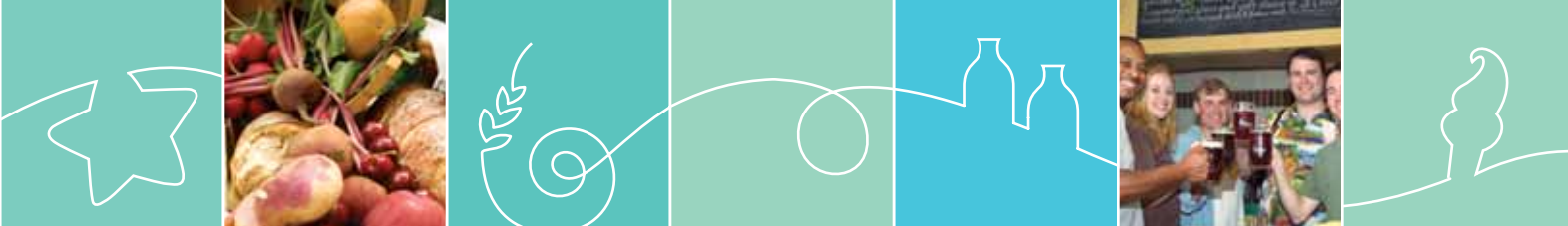
Sunday provides the perfect opportunity to see even more of Pennsylvania Dutch Country. Explore antiques markets large and small. Take a ride through our farmlands on an old steam train. Sample local beers or wines, or even treat the entire family to a Sunday Sundae. It'll be a FlavorFest experience to remember!

Before the sun comes up on Sunday mornings,

ADAMSTOWN
 KNOWN FOR HATS
 AND ANTIQUES
 FOUNDED
 1756

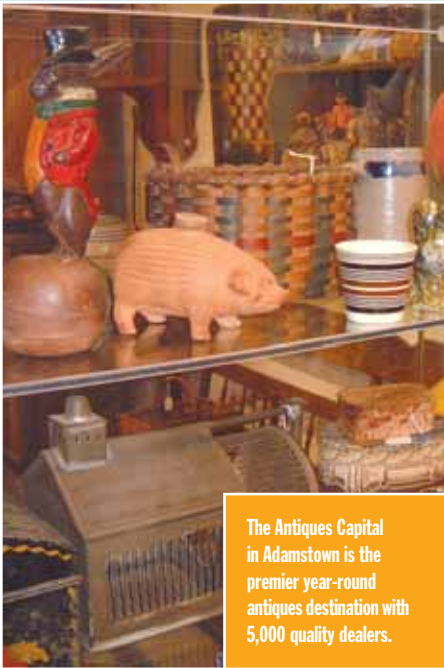
the outdoor markets and auctions are already bustling with activity in Adamstown.





Adamstown is an antiquing mecca, with more than 5,000 antique dealers tucked away in large co-op malls or tiny mom-and-pop shops with everything from quilts and pottery to retro chic housewares to enormous architectural antiques just perfect for that home renovation. Antiques Extravaganza weekends in April, June and September bring out even more antique dealers for a display that is unequaled anywhere! Serious antique collectors and casual browsers are at home in Adamstown—whether you're looking for an English armoire or carnival glass, you'll find your very own antique treasure here.

Your FlavorFest connection is also alive as you browse through the vintage items. Stop by Stoudt's Brewing Company, part of the *FlavorFest Ale Trail*, for a tasting of authentic locally-made German microbrews and German-inspired dishes. The historic brewpub is a history lesson in itself, with themed dining rooms and plenty of stories to be told.



The Antiques Capital in Adamstown is the premier year-round antiques destination with 5,000 quality dealers.

FlavorFest Signature "Trains, Farms & Foods" Tours, which offer a special guidebook with farm facts and recipes to browse as you roll along the Rail Road to Cherry-Crest Farm. Or, head to the Railroad Museum of Pennsylvania, which offers a special Moveable Feast photo and artifacts exhibit, detailing the transport of food from farm to table via train, railroad dining and special food-related locomotive cars.



Enjoy a Sunday stroll through a quintessential town square in Strasburg. Here, the Strasburg Rail Road, the oldest short-line railroad in the country, features a scenic 45-minute "ride to Paradise" through the Amish countryside, past farms that produce the vegetables, dairy and other products that feed the country. Take advantage of special



Top chefs from around the globe enjoy a taste of traditional PA Dutch cooking at Landis Valley Museum.

To celebrate FlavorFest, take advantage of special Strasburg Sundaes, available from May–October. This program offers visitors a special punch card to gain access to special dessert treats, prizes and discounts at participating businesses. Join them for a grand Ice Cream Festival in June or for other great events during the season that are sure to make Sundays even sweeter!



From antiquing to hundreds of brand name outlet stores, Lancaster County is a shopping mecca!

Landis Valley

Your Sunday adventure isn't over yet! Check out the Landis Valley Museum, a FlavorFest Signature Site, which offers year-round foodie demonstrations, samples and lessons on the heritage of Pennsylvania German life through the years. Special weekends highlight many of those traditions throughout the year. For FlavorFest, experience the Fasnachts in the Making weekend in February, May's Herb and Garden Faire, Pumpkin Patch & Harvest Days in October and for three special weekends in December, visit the Country Christmas Village to experience the holidays Pennsylvania German style!

Chocolate Covered Sundays Tour

Travel to Hershey via Elizabethtown and Lititz for a Sunday outing that couldn't be sweeter! Learn about Milton Hershey's adventures in making chocolate, and visit Founder's Hall, the Milton Hershey School and Hershey's Chocolate World. You'll also visit Landis Valley Museum and take a backroads tour of Amish Farmlands. Guided tours leave the Visitors Center every Sunday. Call 1-800-PA-DUTCH for reservations.



Making Memories.



Voted Lancaster's Favorite Hotel...Again
 —Lancaster Newspapers 2005



Two restaurants & lounge



Indoor & outdoor pools, whirlpool, fitness center, tennis, basketball & shuffleboard



5 min. from Amish Attractions, Outlet Shopping, Dutch Wonderland
 30 min. from Hersheypark



Eden Resort Inn
 and Suites



Visit www.EdenResort.com
 for special packages and promotions!

TEL 717-569-6444 • TOLL FREE 888-477-7754

Ask about our Kids Stay & Eat FREE Package
 Easy Access: Rts. 30 & 272 • Oregon Pike Exit • Lancaster

The Suites at Eden Resort



40 Residential Style Suites:

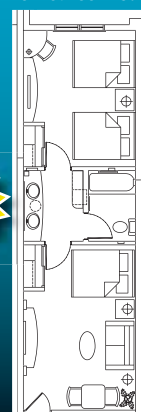
- Accommodations from 2-8 people
- Spacious living room area with fireplace
- Private ground floor entrance with patios or balconies
- Fully equipped kitchen

72 Spacious Two Room Suites:

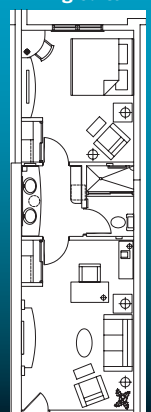
- 1 & 2 bedroom suites that accommodate up to 8 people
- Living room & bedroom separated by private bath
- Two flat-panel TVs, hi-speed internet & cordless phones
- Microwave, refrigerator, & coffeemaker



Two-Bedroom Suite



King Suite





AAA Buggy Rides V9

Kitchen Kettle Village, Route 340, Intercourse, PA 17534. Come ride with the Stoltzfus family. Journey scenic country roads back in time in carriages built and driven by Amish families. Groups, children and families welcome. Friendly horses. Two locations. 717-687-9962. www.AAAbuggyrides.com *

AAA Buggy Rides T12

Red Caboose, Route 741 and Paradise Lane, Strasburg, PA 17579. 717-687-9962. www.AAAbuggyrides.com *

Aaron & Jessica's Buggy Rides U9

Route 340, Bird-in-Hand, PA 17505. Aaron & Jessica's Buggy Rides takes you along private Amish roads, through two non-commercial, working Amish farms. No cars. Experience real Amish life. Owned and operated by Plain People, a family business. All Amish area. 5 routes available. 717-768-8828. www.amishbuggyrides.com See ad on map. *

Abe's Buggy Rides R9

2596 Old Philadelphia Pike, Bird-in-Hand, PA 17505. We use the original Amish buggies. Enjoy our picnic area in the shade by the pond. Children also enjoy petting our animals. We do our best to please you. Ask our drivers about their Amish history. 717-392-1794. www.abesbuggyrides.com *

Adventure Sports EE4

P.O. Box 715, Route 743 South, Hershey, PA 17033. 717-533-7479. www.adventurehershey.com *

Amish Barn Buggy Rides T9

3029 Old Philadelphia Pike, Bird-in-Hand, PA 17505. Ride back in time to an era before the car, train or plane were ever imagined. See the beautiful countryside of Lancaster County with its Amish farms and gardens. www.amishbarnbuggyrides.com *

The Amish Country Homestead U9

Route 340, the Amish Experience, Plain & Fancy Farm. 717-768-3600 ext. 210. www.AmishExperience.com. See how the Amish live today on guided tours of our 9-room house, the only designated "Heritage Site" Amish house tour in Lancaster County. Learn about Amish dress and the "how and why" of life without electricity. See *Amish Country News* for coupons. *☆

The Amish Experience F/X Theater U9

Route 340, the Amish Experience, Plain & Fancy Farm. 717-768-3600 ext. 210. www.AmishExperience.com. Become part of the Amish story in this one-of-a-kind 5-screen experiential theater, newly re-mastered. "Pepper's Ghost" and special effects. 400 years of history in 40 minutes of magic. Shows on the hour, 7 days. See *Amish Country News* for coupons. *

Save time and money by buying your tickets online.

FIND OUT MORE AT
WWW.PADUTCHCOUNTRY.COM

AMISH FARM AND HOUSE R10



2395 Lincoln Highway East (Route 30), Lancaster, PA 17602. Experience the simple way of life for Lancaster's Amish People on a guided tour through the 1805 farmhouse. Next explore the barns and see the farm animals. Gift Shop with hand-crafted items. Buggy Rides. Open daily, year-round. 717-394-6185. www.amishfarmandhouse.com * ♻️

The Amish Village S11

Route 896, Strasburg, PA 17579. Educational tour describing the history and lifestyle of today's Lancaster County Amish community. Blacksmith shop, farm animals, Amish school, Amish-made crafts, gift/specialty food shops, picnic area. MC, V. 717-687-8511. www.padutch.com/avillage.html See ad, page 23. *

A.R.T. Research Enterprises, Inc. F9

3050 Industry Drive, Lancaster, PA 17603. 717-290-1303. www.thinksculpture.com *

Audubon Pennsylvania

717-213-6880 Ext. 16. www.pabirdingtrails.org *

AvalancheXpress at

Heritage Hills Golf Resort A9

2700 Mt. Rose Avenue, York, PA 17402. 717-755-0123. 877-STAY-PLAY. www.hhgr.com *

BALLOON RIDES DAILY S12



COME UP SLOW DOWN! A Once In A Lifetime Experience. Relax; enjoy the exhilaration of floating effortlessly over Lancaster County, picturesque Amish farmland. AM/PM rides available from the Netherlands Inn & Spa. Call 800-763-5987 to reserve your flight. www.usshotairballoon.com *

STRASBURG, PENNSYLVANIA

CHOO CHOO BARN

Traintown, U.S.A.

WOW!

See Lancaster County in Miniature!

Over 150 animated figures and 22 trains.

www.choochoobarn.com

As featured in Lionel Train's "Historic Layout Series."

Don't miss the Shops Of Traintown, featuring Thomas' Trainside Station Lancaster County's ONLY officially licensed 100% "Thomas & Friends" Store

Call (800) 450-2920 or order online at www.ttstation.com

All located along Route 741, just east of Strasburg.



Doneckers

Distinct DESTINATION.

Shop **The Fashion Store's** endless array of unique fashions for the entire family, including our Popular-priced Selection.

The Restaurant features innovative American cuisine, including our Tavern Menu's sizzling steaks. Resv. suggested (717) 738-9501.

The Fine Furniture Galleries offer four floors, encompassing 52,000 sq. ft., filled with the finest furniture at North Carolina prices.

Relax at **The Inns**, in one of our 35 comfortable rooms, including fireplace & Jacuzzi® suites. Open daily. Resv., (717) 738-9502.

100-409 N. State St., Ephrata, PA
(717) 738-9500 • www.doneckers.com
The Store: M-Tu-Th 10-8, Fri 10-9, Sat 10-5.
Closed Wed & Sun.

BIBLICAL TABERNACLE P10



Mennonite Information Center, 2209 Millstream Road, Lancaster, PA 17602. A presentation of this life-size reproduction explains the historic construction and spiritual significance of this symbolic dwelling place of God. 717-299-0954. 800-858-8320. www.mennoniteinfoctr.com See ad, page 27. * ♿

Boulders Miniature Golf Course E8

Route 30, Mountville exit, Mountville, PA 17554. 717-285-7007. www.bouldersminigolf.com *

Boys Bear Country A9

75 Cunningham Road, Gettysburg, PA 17325. 1-866-367-8338. www.boysbearcountry.com *

CHERRY-CREST FARM U12



150 Cherry Hill Road, Ronks, PA 17572. Experience 4-5 hours of unique family fun, including the famous corn maze, The Amazing Maize Maze.™ Also a farm animal center, farm tour ride, pumpkin slinger, pedal karts, singing chicken show and much more. Great food and festivals. Open June-October. Pumpkins and fall-related activities. 717-687-6843. www.cherrycrestfarm.com *

Choo Choo Barn—Traintown, U.S.A.® S13

Route 741 East, P.O. Box 130-P5, Strasburg, PA 17579. See Lancaster County like you've never seen it before—in miniature! Our hand-built 1,700 square foot display features over 150 animated figures and 22 trains. Featured in Lionel Train's "Historic Layout Series" "Absolutely Amazing!" Open April-December. 717-687-7911. 800-450-2920. www.choochoo.com See ad, page 16. *

Cornwall Iron Furnace E2

Rexmont at Boyd Streets, P.O. Box 251, Cornwall, PA 17016. 717-272-9711. www.phmc.state.pa.us *

Country Barn Farm Market E9

211 South Donnersville Road, Lancaster, PA 17603. 717-872-1554. www.countrybarmkt.com * ♿

Doneckers Community T4

100-409 North State Street, Ephrata, PA 17522. 717-738-9500. www.doneckers.com See ad, this page. *

Dutch Country Helicopters M5

500 Airport Road, Suite T, Lititz, PA 17543. 717-735-2208. www.dutchcountryhelo.com *

DUTCH WONDERLAND®

Family Amusement Park Q10

2249 Lincoln Highway East, Lancaster, PA 17602. 717-291-1888. 1-866-FUNatDW. DutchWonderland.com See ad, this page. * ♿ ♿ ♿

Eagle Falls Thrills & Spills Q10

2343 Lincoln Highway East, Lancaster, PA 17603. 717-397-4674. www.eaglefalls.biz *

Ed's Buggy Rides S11

Route 896, Strasburg, PA. Come with us on a 3.5 mile tour through Amish farmlands. We travel only scenic back roads. Ask about our special buggy ride that stops on a real Amish farm. 1-hour ride. Across from Sight & Sound. We have the lowest prices. 717-687-0360. www.edsbuggyrides.com *

Your KINGDOM Awaits!

Dutch Wonderland Family Amusement Park

New for 2006, The Danger Rangers Safety Show!

DutchWonderland.com 1-866-FUNatDW

© 2005 Wonderland Amusement Management LLC. DUTCH WONDERLAND is a trademark used under license.

How To LOCATE PROPERTIES ON THE MAP

- Information Centers
- Attractions, Sightseeing/Tours
- Shops, Markets, and Outlets
- Lodging
- Retirement Communities
- Transportation
- Lancaster County Heritage
- Pet Friendly
- Transportation Services
- Service Stations/Car Wash
- Campgrounds
- Restaurants
- Hospitals
- Libraries
- Educational Facilities
- Banks
- Golf
- Bus Information Center
- Airports
- Train Stations

Handicap Facilities —

We suggest you contact the businesses you are planning to visit to be sure they can accommodate your individual needs.

MC-Master Card, V-Visa, D-Discover, AX-American Express, DC-Diner's Club, CB-Carte Blanche, PC-Personal Checks, MAC-Debit Card, AC-Air Conditioning, DR-Dining Room, CTV-Color TV, CCTV-Color Cable TV, B-Bar, C-Cribs, P-Pets, EWS-Electric, Water, Sewer

A1-Z19 Refers to map location

George's Woodcrafts Inc. A7

9 Reichs Church Road, Marietta, PA 17547. 800-799-1685. www.georgeswood.com * ♿

Hands-on House,

Children's Museum of Lancaster L6

721 Landis Valley Road, Lancaster, PA 17601. 717-569-KIDS (5437). www.handsonhouse.org *

Hayloft Candles & Petting Zoo U6

99 South Groffdale Road, Leola, PA 17540. 717-656-9463. ♿ *

Herr's Snack Factory Tour X19

20 Herr Dr. (Rts. 272 & 1), P.O. Box 300, Nottingham, PA 19362. Sample fresh, warm snacks; gift shop; guided tours; Chipper's Café and more. We offer families, schools and bus tours lots of free fun! Wheelchair and Stroller Accessible. Open Mon.-Thurs., 9 a.m.-3 p.m.; Fri. 9 a.m.-11 a.m. 1-800-63-snack. www.herrs.com *

HERSHEYPARK® EE2

100 West Hershey Park Drive, Hershey, PA 17033. 1-800-HERSHEY. Hersheypark.com See ad, back cover. *

Hershey's Chocolate World DD2

800 Park Boulevard, Hershey, PA 17033. Free chocolate-making tour ride—All new Spring 2006. Hershey's Factory Works Experience, Hershey's Really Big 3D Show, gift shops and food court. 717-534-4900. www.hersheyschocolateworld.com * ♿ ♿

High Sports, Inc. K4

727 Furnace Hills Pike, Lititz, PA 17543. A challenging 20-hole miniature golf course around waterfalls on a hillside overlooking beautiful Amish farms. Self-serve driving range with lights; batting cages, baseball and slow pitch softball, Figure-8 go-kart track and snack bar. Beautiful gazebo available on-site for party rental. 717-626-8318. www.highsports.com *

Indian Echo Caverns BB3

368 Middletown Road, Hummelstown, PA 17036. 717-566-8131. www.indianechocaverns.com See ad, this page. *

Intercourse Pretzel Factory V9

3614 Old Philadelphia Pike (at Cross Keys), Intercourse, PA 17534. Preserving hand-twisted traditions, see us make pretzels. Learn about our art and let us teach you to twist one yourself on our free tour. Store hours: Mon.-Sat., 9-5. Tours: Tues.-Sat., 9-3 (in season). 717-768-3432. www.intercoursepretzelfactory.com *

Kitchen Kettle Village V9

Route 340, Intercourse, PA 17534. Stroll through a village of 42 shops and restaurants built around Lancaster County's nationally celebrated Jam & Relish kitchen. Sample pepper jam, listen to Banjo Jimmy and much more. Monday-Saturday 9:00 a.m.-5:00 p.m. 800-732-3538. www.kitchenkettle.com See ad, page 19. * ♿ ♿

Kog Hill Winery Z5

105 Twin County Road (Route 10), Morgantown, PA 19543. 610-913-6609. www.koghillwinery.com *

OPEN DAILY



Daily Tours

Gift Shop

Marvels of Nature...

Treasures of History!

For more information call
(717) 566-8131

Indian Echo CAVERNS

Off US Rt. 322 & 283 at the Middlestown/Hummelstown Exit
30 Minutes from Lancaster

www.indianechocaverns.com

Kutztown
Pennsylvania German
Festival

Revisit Your Past at America's Premier Folklife Festival



July 1 - July 9, 2006

- ♥ 200 folk artists & craftsmen
- ♥ 2000 quilts for sale and auction
- ♥ Antiques ♥ Dancin' & fiddlin'
- ♥ Children's farmyard and fun
- ♥ 6 stages of entertainment
- ♥ PA Dutch folklore and farming
- ♥ PA Dutch food

KUTZTOWN FAIRGROUNDS ♥ KUTZTOWN, PA
FOR INFO. CALL TOLL-FREE: 888-674-6136

www.kutztownfestival.com



Excitement & Family Fun



Minor league baseball in downtown Lancaster at state-of-the-art Clipper Magazine Stadium

For More Information, Call 717.509.HITS Or Visit www.lancasterbarnstormers.com



Kreider Farms Tour F5

1461 Lancaster Road, Manheim, PA 17545.
717-665-5039. www.kreiderfarms.com *

Kutztown Festival Y2

Kutztown Fairgrounds, 225 North Whiteoak Street,
P.O. Box 306, Kutztown, PA 19530. 888-674-6136.
www.kutztownfestival.com See ad, page 18. *

Lancaster Barnstormers Baseball K8

Clipper Magazine Stadium, 650 North Prince Street,
Lancaster, PA 17603. 717-509-HITS.
www.lancasterbarnstormers.com See ad, page 18. *

Lancaster County Historical Society J8

230 North President Avenue, Lancaster, PA 17603. Free
exhibitions: Ben Franklin, (January–May); major
retrospective on Susquehanna River, (July–December);
WWII encampment (May). Favorite destination for
genealogists. Great selection of books and gifts.
717-392-4633. www.lancasterhistory.org. *

Lancaster Newspapers Newseum K9

28 South Queen St., Lancaster, PA 17603. 717-291-8600.
http://visit.lancasteronline.com/museums *

Landis Valley Museum M6

2451 Kissel Hill Road, Lancaster, PA 17601. Largest
authentic PA Dutch Living History Village interpreting
German life & customs. Daily craft demonstrations. Well-
landscaped gardens & authentic working farmsteads with
historic animal breeds. Picnicking. Daily 9–5, Sun. 12–5.
717-569-0401. www.landisvalleymuseum.org * ♻️ ☆

Laserdome D5

2050 Auction Road, Manheim, PA 17545.
717-492-0002. www.laserdome.com *

Need directions?
Map your itinerary with
our online Travel Planner
AT
WWW.PADUTCHCOUNTRY.COM



Give me 2 hours, and I'll find the kid inside you.



Take time to step backwards. To a time of horse-drawn wagons and homemade fudge, of banjo-picking and heart and soul cooking. Where fun is preserved and bottled.

We put the fun back into shopping. Quality and pride are still evident in everything from fine leathers to engraved gold leaf signs, from hand-stitched christening gowns to hand-sewn quilts, from original oil



paintings of area landscapes to handmade Italian music boxes of inlaid woods. Find simple pleasures like double-dipped ice cream cones, grandma's mile-high coconut cream pies and snickerdoodle cookies hot from the oven.

At the heart of the village is one of the world's most celebrated canning kitchens. Watch local farmwomen putting up our 72 original recipes of jams and relishes,

right before your eyes, just like we've done for over 50 years.

Come for a few hours. The day. Or stay the night in one of our charmed rooms or suites and dream under a cozy quilt.

Come out to our spring Rhubarb Festival. Our summer Berry Festival. Or our Sweets & Sours Festival in the fall.

Everyday's play day in our Village. Discover that you're

never too old to be a kid again, to dance to the music of life.

And when Banjo Jimmy and his boys start to play their down-home music and set your toes to tapping, just take my arm.

You don't stop dancing because you get old. You get old because you stop dancing.

–Pat Burnley



Tucked in the town of Intercourse on route 340, 10 miles east of Lancaster Mon.–Sat. 9 to 5:00 tel: 800-732-3538 www.kitchenkettle.com

Come linger! For reservations, visit us online at WWW.PADUTCHCOUNTRY.COM or call 1-800-PA-DUTCH.

Leisure Bowling and Golfing Center E9

3440 Columbia Avenue, Lancaster, PA 17603. 52 bowling lanes open 24 hours year-round. Lighted golf driving range, the area's only real grass 18-hole miniature golf course, plus 18-hole safari miniature golf course, billiard room, game room and snack bar. 717-392-2121. 800-310-0848. www.leisurelanespa.com *

"Living The Experience"

Underground Railroad Reenactment L9

Bethel Harambee Historical Services. Historic Bethel African Methodist Episcopal Church, 512 East Strawberry Street, ChurchTowne of Lancaster, PA 17602. 1-800-510-5899 ext. 113. www.livingtheundergroundrailroad.com *

LONGWOOD GARDENS Z14



U.S. Route 1, Kennett Square, PA 19348. The world's premier horticultural display on 1,050 acres offers 40 indoor/outdoor gardens, 4-acre conservatory, spectacular fountains, festivals, holiday displays. New East Conservatory opens Fall 2005 and 2006 Centennial Celebrations throughout the year. 610-388-1000. www.longwoodgardens.org *

Mascot Roller Mills and Ressler Family Home T7

Stumptown Road and Route 772, Ronks, PA 17572. 717-656-7616. www.resslermill.com * ☆

Middletown & Hummelstown Railroad BB4

136 Brown Street, Middletown, PA 17057. 717-944-4435 ext. 0. *

Mill Bridge Village T11

101 South Ronks Road, Ronks, PA 17572. 717-687-8181 or 800-645-2744. www.millbridge.com * ☆ ▲

Moon Dancer Vineyards & Winery A10

1282 Klines Run Road, Wrightsville, PA 17368. 717-252-WINE. www.moondancerwinery.com *

Mount Hope Estate & Winery E3

83 Mansion House Road, Route 72 and PA Turnpike Exit 266, Manheim, PA 17545. 717-665-7021. www.PaRenFaire.com *

The National Toy Train Museum T12

300 Paradise Lane, Strasburg, PA 17579. A collection of hundreds of toy trains from mid-1800s to present day. Interactive, operating layouts in five different gauges. Toy train videos run continuously on a large screen projection TV. Toy Train Reference Library open Monday to Friday. 717-687-8976. www.nttmuseum.org See ad, page 22. *

NATIONAL CHRISTMAS CENTER W11



3427 Lincoln Highway, Paradise, PA 17562. Family-friendly, indoor Christmas exhibits. Twelve galleries including Santa's Workshop, A PA Christmas, A Journey to Bethlehem, an animated storybook village, antiques, toys, trains and more. Open June–December. 717-442-7950. www.nationalchristmascenter.com *

NISSLEY VINEYARDS AND WINERY ESTATE A6



140 Vintage Drive, Bainbridge, PA 17502. Turn off PA 441 at Wickersham Road and follow signs. Featuring tastings of award-winning vintage wines, tours of scenic operating winery and summer concert series. Also wine shop, picnic patios, and county roadways for biking. Year round. Monday–Saturday, 10–5; Sunday, 1–4. 717-426-3514. www.nissleywine.com *

Overlook Falls Mini-Golf K7

2099 Fruitville Pike, Lancaster, PA 17601. 717-587-5695. www.manheimtownship.org * 📍

Pennsylvania Renaissance Faire E3

Mansion House Road, Route 72 at PA Turnpike Exit 266, Manheim, PA 17545. Experience the fantasy of bygone days and knights at PA's most glorious festival. 12 weekends begin August 12. 11 royal stages. 85 shows daily. Scores of arts and crafts. 21 kitchens. 100s of colorfully costumed characters. 35 acres of non-stop merriment. Operating Brew Pub. Web site discount tickets. 717-665-7021. www.PaRenFaire.com *

Pioneer Tunnel Coal Mine H1

19th and Oak Streets, Ashland, PA 17921. 570-875-3850. www.pioneertunnel.com *

Plantation Estates Stables F19

405 Throne Road, Fawn Grove, PA 17321-9342. 717-382-4171. 866-382-4171. www.horseloversb-b.com *

QVC Studio Tour Z13

QVC Studio Park, 1200 Wilson Drive, West Chester, PA 19380. 800-600-9900. www.qvctours.com *

Railroad Museum of Pennsylvania T13

Route 741 East, P.O. Box 125, Strasburg, PA 17579. Discover more than 100 historic locomotives, passenger, freight and work cars and scores of scale models. Explore an engine, caboose, WWII coach and depot. Experience the interactive education center and more! 717-687-8628. www.rmmuseumpa.org See ad, page 23. * ☆

Roadside America (Indoor Miniature Village) H1

109 Roadside Drive, Exit 23 off I-78/US 22, Shartlesville, PA 19554. 610-488-6241. www.roadsideamericainc.com *

Robert Fulton Birthplace S18

Route 222, Robert Fulton Highway, P.O. Box 33, Quarryville, PA 17566. 717-548-2351. * ☆

Shank's Mare Outfitters A9

2092 Long Level Road, Route 624, Wrightsville, PA 17368. 877-554-5080. www.shanksmare.com *

Stoudt's Brewery and Beer Festivals X2

Route 272 North, Adamstown, PA 19501. 717-484-4386. www.stoudtsbeer.com * 🍷

Stoudtburg Village & Shoppes X2

Route 272 North, Adamstown, PA 19501. 717-484-2757. www.stoudtburgvillage.com * 🍷

Strasburg Rail Road T13

Rte. 741 East, P.O. Box 96, Strasburg, PA 17579. 717-687-7522. www.strasburgrailroad.com See ad, page 23. *

Sturgis Pretzel House L4

219 East Main Street, Lititz, PA 17543. 717-626-4354. www.sturgispretzel.com *

Susquehanna Glass Factory D9

731 Avenue H, Columbia, PA 17512. Celebrating 95 years. The Glass Factory offers free factory tours Monday–Friday from April–December. Call for reservations. Watch glassware being Hand Cut in a 1920 factory. A truly fascinating experience. 717-684-2155 or 800-592-3646. www.theglassfactory.com *

Tumble Town at Rockvale Outlets R10

35 South Willowdale Drive, Lancaster, PA 17602. 717-295-4900. www.tumbletown.com * 🍷

Twin Brook Winery Z13

5697 Strasburg Road, Gap, PA 17527. 717-442-4915. www.twinbrookwinery.com *

Need assistance with your
travel planning and lodging?

Call 1-800-PADUTCH

OR VISIT US ONLINE AT

WWW.PADUTCHCOUNTRY.COM

VILLAGE GREENS

MINIATURE GOLF & SNACK BAR Q13



1444 Village Road, Route 741 West, Strasburg, PA 17579. Two spacious courses combine the challenge of golf with the natural beauty of lush gardens creating a unique miniature golf experience for all generations. 717-687-6933. www.villagegreens.com See ad, page 22. *

Water's Edge Mini Golf S9

230 North Ronks Road, Bird-in-Hand, PA 17540. 717-768-GOLF. *

Weavertown One-Room Schoolhouse T9

2916 Old Philadelphia Pike, Route 340, Bird-in-Hand, PA 17572. 717-768-4424. www.WeavertownOneRoomSchool.com * ☆

Wilton Armetale® Factory Tour and Store C6

Plumb and Square Streets, Mount Joy, PA 17552. Guided tour of factory including pouring of 1300° molten metal. Tours available Mon.–Thurs. 10:00 a.m.–1:30 p.m. Call for your tour reservation. Store Hours: Mon.–Sat. 9:30 a.m.–5:30 p.m.; Sun., Noon–5:00 p.m. 866-WILTON1. www.armetale.com *

WONDERLAND MINI-GOLFSM Q10



2249 Lincoln Highway East (Route 30), Lancaster, PA 17602. Challenging 18-hole course that's fun for the whole family. Enjoy a refreshing stop in Par 3 Ice-Cream Parlor & Café for a treat! Great Birthday Party packages. Seasonal, please call for hours. 717-295-5710 or 1-866-FUNatDW. DutchWonderland.com *

OVERNIGHT GOLF PACKAGES



The Black Horse Lodge and Suites X2

PA Route 272 at PA Turnpike Exit 286, Denver, PA 17517. Economical golf packages in cooperation with eleven championship golf courses. Lodging, green fees, cart and breakfast included. 717-336-7563 or 1-800-610-3805. www.blackhorselodge.com

Continental Inn Q9

2285 Lincoln Highway East, Lancaster, PA 17602. 717-299-0421. www.continentalinn.com. Custom-tailored golf packages including room, meals, and golf at your choice of local championship golf courses. Call today, visit us online, or send inquiries to: golf@continentalinn.com

Hampton Inn Manheim, Lancaster County E3

2764 Lebanon Road (Route 72) Manheim, PA 17545. Overnight accommodations in our award-winning hotel. On-the-house breakfast featuring hot item. Daily greens fees and cart rental. Several beautiful courses to choose from! Valid March 1 to November 1, 2006 based on availability and course hours. Call hotel directly for details. 717-665-6600. 800-HAMPTON. www.hamptoninn.com



Lancaster Host Golf Resort Q10

2300 Lincoln Hwy. East, Lancaster, PA 17602. Areas only resort w/18 holes of championship golf on site! Package includes deluxe overnight lodging, full breakfast, 18 holes of golf with cart for each night of stay. (Unlimited golf based on availability). This premier course features ladies/mens tees, driving range, Pro Shop and on site PGA Pro. 800-233-0121. www.lancasterhost.com See ad, page 43.

Netherlands Inn & Spa S12

One Historic Drive, Strasburg, PA 17579. Golf packages include: double occupancy room special, complimentary full breakfast buffet, dinner at The Bistro, 18 holes of golf and a \$20 credit at our new billiard room. Relax at our heated outdoor pool and Jacuzzi or socialize in our billiard room with darts, game tables, and TVs. 717-687-7691. 800-872-0201. www.netherlandsinn.com See ad, page 43.

Willow Valley Resort & Conference Center L12

2416 Willow Street Pike, Lancaster, PA 17602. Golf packages include overnight lodging, breakfast smorgasbord, greens fee and cart at the Willow Valley Golf Course or a private Country Club within 1 mile of Willow Valley. Call today for reservations. 800-444-1714. www.willowvalley.com See ad, inside back cover.

GOLF COURSES



Lancaster Host Golf Resort Q10

2300 Lincoln Highway East, Lancaster, PA 17602. 717-397-7756 or 800-233-0121. www.lancasterhost.com

Willow Valley Golf Course L12

Willow Valley Resort, 2416 Willow Street Pike, Lancaster, PA 17602. 717-464-4448 or 800-444-1714. www.willowvalley.com See ad, inside back cover.

Americana Museum of Bird-in-Hand S9

2709 Old Philadelphia Pike, Bird-in-Hand, PA 17505. 717-391-9780. www.bird-in-hand.com/americanamuseum/ *

Antique Auto Museum at Hershey DD1

161 Museum Drive, Hershey, PA 17033. "Cruise through time" as you experience eight decades of antique cars, buses and memorabilia. Automotive history unfolds as you explore antique cars in uniquely themed period displays. Gift shop and more! 717-566-7100. www.aacmuseum.org *

Brandywine River Museum Z14

US Route 1, Chadds Ford, PA 19317. 1-610-388-2700. www.brandywinemuseum.org *

Demuth Museum L9

120 East King Street, Lancaster, PA 17602. 717-299-9940. www.demuth.org * ☆

Discover Lancaster County History Museum Q10

2249 Lincoln Highway East, Lancaster, PA 17602. 717-393-3679. DiscoverLancaster.com *

Ephrata Cloister S4

632 West Main Street, Ephrata, PA 17522. 717-733-6600. www.ephratacloister.org. * ☆

MUSEUMS



1852 Herr Family Homestead E6

1756 Nissley Road, Landisville, PA 17538. 717-898-8822. www.herrhomestead.org * ☆

American Military Edged Weaponry Museum V9

3562 Old Philadelphia Pike, Intercourse, PA 17534. 717-768-7185. *

Come Play A Round
at the
Village Greens



Miniature
Golf and
Snack Bar



2 Spacious
Miniature Golf Courses

Unique Garden Setting

Daily April through October

*Recommended by
Sports Illustrated!*

Rt 741 West of Strasburg, PA
(717) 687-6933

**A CENTURY
OF DREAMS!**



**THE NATIONAL
TOY TRAIN
MUSEUM**

A visit to The National Toy Train Museum is a memorable experience that can be enjoyed by the entire family. Young and old alike will delight in our five huge operating push button layouts featuring toy trains from the 1800's to the present.

Off Route 741 East
Paradise Lane • Strasburg, PA 17579
(717) 687-8976
www.nttmuseum.org



**Eldreth
Pottery**

We produce traditional Salt-Glazed Stoneware and Pennsylvania Redware Pottery. All pottery is handmade in Lancaster County using traditional Pennsylvania German production methods.

Our Showroom features museum quality pottery, limited editions, prototype, one-of-a-kind pieces, plus production seconds.

We host two annual open houses. One, in May, is held at our factory in Oxford. Our Christmas event is held the first weekend in December at our Strasburg store. Call for details:

246 North Decatur Street
Route 896
Strasburg, PA 17579
Phone: 717-687-8445

We can ship your purchase anywhere in the continental U.S.



Open daily 9:00am to 5:00pm • Sunday from 12:00 noon • Thursday till 8:00 pm July & August • Friday till 8:00 pm July thru December

www.eldrethpottery.com



Real Trains! Real History!
Real Excitement!

**RAILROAD MUSEUM
of PENNSYLVANIA**



Climb aboard a caboose, take the throttle in an authentic freight locomotive and inspect a 62-ton engine from underneath. You'll enjoy:

- A world-class collection of more than 100 historic locomotives and railroad cars.
- Fun and challenging hands-on activities in Stewart Junction railway education center.
- Fascinating special events.
- Free parking on site.
- Whistle Stop Shop museum store.
- Group rates, with advance registration.

A GREAT FAMILY OUTING! • Open year-round.
(717) 687-8628 • Route 741, Strasburg

Administered by the Pennsylvania Historical & Museum Commission, with the active support of the Friends of the Railroad Museum.

www.rrmuseumpa.org

OPERATING WATER WHEEL * TOURS *

SPRING HOUSE * PICNIC GROUNDS * GUIDED TOURS * FARM ANIMALS

Discover the Amish way of life...

**The
Amish
Village**



Visit the Amish Village and experience first hand the daily life of a self-sufficient community that has remained true to their heritage and beliefs through the years.

Groups welcome. ♦ Open year round.

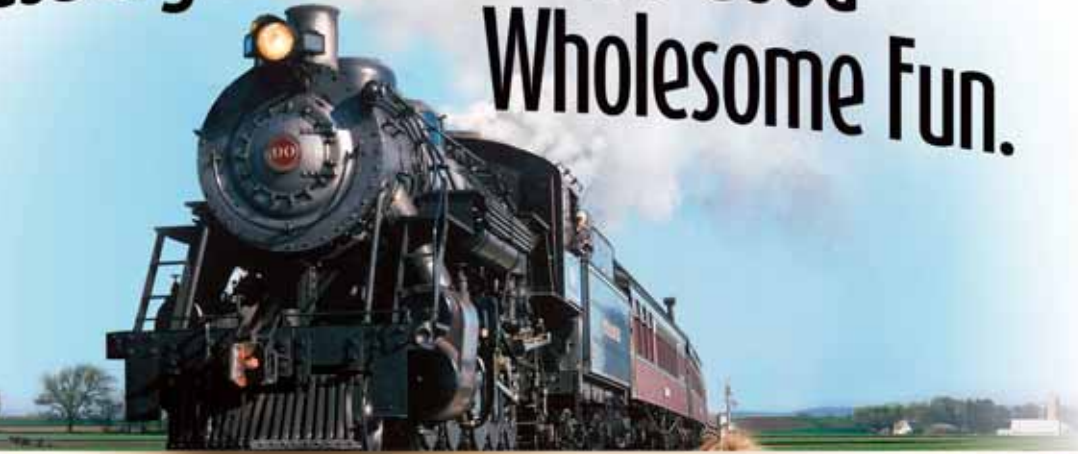
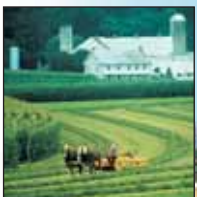


Route 896, Strasburg, PA 17579
(717) 687-8511

BLACKSMITH SHOP * ONE ROOM SCHOOLHOUSE * LIVESTOCK

OPERATING SMOKEHOUSE * FARM ANIMALS

**Strasburg Rail Road. It's Good
Wholesome Fun.**



Ride aboard an authentic steam train through beautiful PA Dutch Country. See our Amish neighbors at work and play. Enjoy other train activities at the station. Shop for local treats, railfan merchandise and Thomas™ toys. Experience railroad heritage on the mechanical shop tour and at the Railroad Museum of Pennsylvania. Visit our website for schedules, packages and events. **All aboard!**



Signature FlavorFest™ Tour

Rt. 741, Strasburg, PA • 717-687-7522 • www.strasburgrailroad.com

Gemberling-Rex House H1

106 North Market Street, Schaefferstown, PA 17088.
717-949-2244. www.hsimuseum.org *

Hans Herr House and Museum N13

1849 Hans Herr Drive, Willow Street, PA 17584.
717-464-4438. www.hansherr.org * ☆

Historic Rockford Plantation L9

881 Rockford Road, Lancaster, PA 17602.
717-392-7223. www.rockfordplantation.org * ☆

James Buchanan's Wheatland J8

1120 Marietta Avenue, Lancaster, PA 17603.
717-392-8721. www.wheatland.org * ☆

LANCASTER CULTURAL HISTORY MUSEUM K9



5 West King Street, Lancaster, PA 17603. Open year-round: Tuesday–Saturday 10:00 a.m.–5:00 p.m.; Sunday 12:00 p.m.–5:00 p.m. Explore 300 years of South Central Pennsylvania history through a broad collection of artifacts and exhibits. Admission. 717-299-6440. www.culturalhistorymuseum.com * ♿ ☆

Lancaster Museum of Art L9

135 North Lime Street, Lancaster, PA 17602.
717-394-3497. www.lmapa.com *

LANCASTER QUILT AND TEXTILE MUSEUM K9



37 North Market Street, Lancaster, PA 17603. Open year-round Tuesday–Saturday 10:00 a.m.–5:00 p.m., Sunday 12:00 p.m.–5:00 p.m. \$6.00 adults, \$4.00 children 6+, \$4.00 scheduled groups. View a world-class exhibition of Lancaster County Amish Quilts and changing textile exhibitions. 717-299-6440. www.quiltandtextilemuseum.com * ♿

Landis Valley Museum M6

2451 Kissel Hill Road, Lancaster, PA 17601. 717-569-0401. www.landisvalleymuseum.org * ☆ ♿

Museum Council of Lancaster County

P.O. Box 15, Strasburg, PA 17579. 717-687-8628 ext. 3102. www.lancastercountymuseums.org * ☆

National Christmas Center W11

3427 Lincoln Highway East, Paradise, PA 17562.
717-442-7950. www.nationalchristmascenter.com *

The National Civil War Museum A3

One Lincoln Circle at Reservoir Park, Harrisburg, PA 17105. 717-260-1861. 1-866-BLUGRAY.
www.nationalcivilwarmuseum.org *

National Toy Train Museum T12

300 Paradise Lane, Strasburg, PA 17579. 717-687-8976.
www.nttmuseum.org See ad, page 22. *

National Watch & Clock Museum C9

514 Poplar Street, Columbia, PA 17512. Experience the evolution of timekeeping from early sundials to today's atomic clocks. Take part in hands-on discovery of timekeeping. Drop by and visit sometime! 717-684-8261. www.nawcc.org * ☆

The North Museum of

Natural History & Science J8

400 College Avenue, Lancaster, PA 17603.
717-291-3941. www.northmuseum.org * ☆

THE PEOPLE'S PLACE QUILT MUSEUM V9



3510 Old Philadelphia Pike, Intercourse, PA 17534. "A Showcase of Quilts: Dazzling Contemporary Creations," features 23 outstanding quilts and a number of educational exhibits. Admission is free. Visit our beautiful Museum Shoppe Monday–Saturday 9:00 a.m.–5:00 p.m. 800-828-8218. www.peoplesplacequiltmuseum.com * ☆

Need assistance with your travel planning and lodging?

Call 1-800-PADUTCH

OR VISIT US ONLINE AT

www.PADUTCHCOUNTRY.COM

Railroad Museum of Pennsylvania T13

Route 741 East, P.O. Box 125, Strasburg, PA 17579.
717-687-8628. www.rrmuseumpa.org
See ad, page 23. * ☆

Reading Public Museum Y2

500 Museum Road, Reading, PA 19611-1425.
610-371-5850. www.readingpublicmuseum.org *

State Museum of PA A3

300 North Street, Harrisburg, PA 17120.
717-772-2735. www.phmc.state.pa.us * ☆

Wright's Ferry Mansion C9

Second and Cherry Streets, Columbia, PA 17512. Stone house built for English Quaker Susanna Wright in 1738 with superlative collection of Philadelphia furniture, English ceramics, needlework, metals and glass, all made prior to 1750. Open May through October: Tuesdays, Wednesdays, Fridays and Saturdays, 10–3. (Last tour begins at 3:00 p.m.). 717-684-4325. * ☆



4 Seasons Nails N8

The Shoppes at Greenfield, 565 Greenfield Road, Suite 110, Lancaster, PA 17601. 717-481-8780. *

Mariposa Azul G6

1615 State Street, East Petersburg, PA 17601.
717-940-4600. www.mariposabluespa.com *

The Spa at Intercourse Village V9

3544 Old Philadelphia Pike, P.O. Box 578, Intercourse, PA 17534. 717-768-0555. www.thespaatintercoursevillage.com * ☎

SPA ORANGE AT NETHERLANDS INN & SPA S12



One Historic Drive, Strasburg, PA 17579. Treat yourself to a deeper level of relaxation at Spa Orange, our full-service day spa. Our list of services is as extensive as the care we take in restoring your spirits. Services include, hydrotherapy, deep-tissue massage, manicures, facials and more. 717-455-4000. www.netherlandsinn.com
See ad, page 43. * ☎



Allenberry Playhouse A3
1559 Boiling Springs Road (Route 174). 717-258-3211 or 800-430-5468. www.allenberry.com *

AMERICAN MUSIC THEATRE R10



2425 Lincoln Highway East (Route 30), Lancaster, PA 17602. The critically acclaimed American Music Theatre is celebrating 10 years in Lancaster's spotlight with the brand new *Summer Spectacular*, *Christmas Show*, and a variety of celebrity performers. 717-397-7700 or 800-648-4102. www.AMTshows.com See ad, this page. *

DUTCH APPLE DINNER THEATRE E8



510 Centerville Road, Lancaster, PA 17601. Dinner and a Broadway musical with nationally selected performers and a live orchestra. 2006 season includes: *Forever Plaid*, *Elton John's Aida*, *Anything Goes*, *1776*, *Annie*, *Buddy Holly Story*, *My Fair Lady* and *Sounds of Christmas*. Children's rates and shows available. Group rates for parties of 16 or more. 717-898-1900. www.dutchapple.com * ✕

Ephrata Area Community Theater T4

Brossman Business Complex, 124 East Main Street, P.O. Box 126, Ephrata, PA 17522. 717-738-2228. *

Freedom Chapel Dinner Theatre Y14
15 North Bridge Street, P.O. Box 63, Christiana, PA 17509. 610-593-7013. www.freedomchapeldinnertheatre.com * ✕

Fulton Opera House K9
12 North Prince Street, P.O. Box 1865, Lancaster, PA 17608. 717-397-7425 or 1-888-480-1265. www.atthefulton.org * ☆

How To LOCATE PROPERTIES ON THE MAP

- Information Centers
- Attractions, Sightseeing/Tours
- Shops, Markets, and Outlets
- Lodging
- Retirement Communities
- Transportation
- Lancaster County Heritage
- Pet Friendly
- Transportation Services
- Service Stations/Car Wash
- Campgrounds
- Restaurants
- Hospitals
- Libraries
- Educational Facilities
- Banks
- Golf
- Bus Information Center
- Airports
- Train Stations

Handicap Facilities —

We suggest you contact the businesses you are planning to visit to be sure they can accommodate your individual needs.

MC-Master Card, V-Visa, D-Discover, AX-American Express, DC-Diner's Club, CB-Carte Blanche, PC-Personal Checks, MAC-Debit Card, AC-Air Conditioning, DR-Dining Room, CTV-Color TV, CCTV-Color Cable TV, B-Bar, C-Cribs, P-Pets, EWS-Electric, Water, Sewer

A1-Z19 Refers to map location

Celebrating 10 years in Lancaster's spotlight

American Music Theatre is a destination renowned for world-class entertainment with an accommodating staff that makes you feel like the star of the show. Come, share the spotlight as we raise the curtain on our 10th season...

The 2006 Summer Spectacular

On stage May - October, 2006

The 2006 Christmas Show

On stage November & December, 2006

Over 50 celebrity concerts year round.

AMERICAN MUSIC THEATRE

2425 Lincoln Hwy East, Lancaster
800.648.4102 • www.AMTshows.com



Hole in The Wall Puppet Theatre and Museum K9
126 North Water Street, Lancaster, PA 17603. 717-394-8398. www.holeinthewallpuppettheatre.com *

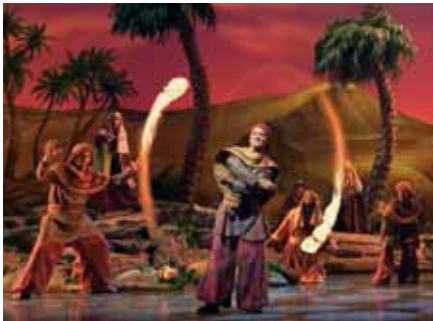
Pennsylvania Academy of Music K9
42 North Prince Street, Lancaster, PA 17603.
717-399-9733. www.paacademymusic.com *

RAINBOW DINNER THEATRE U11



Route 30 East, Paradise, PA 17562. America's only All-Comedy Dinner Theatre. Tuesday–Thursday matinees, Thursday–Saturday evenings, Sunday twilights. Broadway comedies and great dinners. Why settle for the same old song and dance? Toll-Free 800-292-4301; in Lancaster call 687-4300. www.rainbowdinnertheatre.com * ✕

SIGHT & SOUND THEATRES® S12



Route 896, 1-1/2 miles south of Route 30, Strasburg, PA 17579. Spectacular live theatre based on great Bible stories. 300 foot-long wraparound stage, cast of 50+, live animals, elaborate sets and costumes, live vocals. 717-687-7800. www.sight-sound.com
See ad, this page. *

TOUR GUIDE SERVICES



Amish Neighbors Tours, Inc. S12
29 North Decatur Street, Strasburg, PA 17579.
717-687-8650. www.amishneighborstours.com *

Brunswick Tours, Inc. P9
2102 Lincoln Highway. East, Lancaster, PA 17602.
1-800-979-8687. www.brunswicktours.com *

Lancaster County Destination Management Company (Multicultural) K9
447 South Prince Street, Lancaster, PA 17603.
717-392-5467. www.baseinc.org *

SIGHTSEEING & TOURS



Amish Country Tours U9

Route 340, the Amish Experience, Plain & Fancy Farm. 717-768-3600, ext. 210. www.AmishExperience.com
The unspoiled backroad beauty of Amish farmlands, one-room schools, and Amish cottage industries with stops and local guide insights. Daily 2-hr. tours at 10:30 and 2:00; Sunday and winter at 11:30 a.m. Philadelphia tours Wednesdays. See *Amish Country News* for coupons. *

An Amish Country Wilkum (Video Tour)

Action Video Productions. 800-AMISH-PA, ext. 102. www.padutch.com *

Amish Farmland Tours N8

Visitors Center, 501 Greenfield Road, Lancaster, PA 17601. 1-800-PADUTCH. www.padutchcountry.com *

CCInc. Auto Tape Tours of PA Dutch Country N8

For sale at PDCVB or Dutch Wonderland.
A comprehensive tour of the culture, customs and life style of the Amish. A do-it-yourself driving experience that will be fun for everyone. On CD or cassette. Loaded in history, facts, stories and music. 717-299-8901 or 717-291-1888. www.autotapetours.com *

SIGHT & SOUND THEATRES®



Inspiring Stories...

Spectacular Shows

The stories have intrigued the world. Now see them come to life in shows that surpass what you've ever known as live theatre.

Imagine the greatest stories of the Bible presented on a massive wraparound stage by more than 50 actors. Realistic sets up to 40 feet high. Spectacular special effects and costumes. And dozens of live animals. Imagine Sight & Sound Theatres.



Call 717.687.7800 or visit www.sight-sound.com
Lancaster County, PA

Ghost Tour of Lancaster County S13

2 West Main Street, Strasburg, PA 17579. 717-687-6687. www.ghosttour.com *

Historic Lancaster Walking Tour K9

100 South Queen Street, Lancaster, PA 17603. 717-392-1776. * ☆

Mennonite Information Center P10

2209 Millstream Road, Lancaster, PA 17602. 717-299-0954 or 800-858-8320. www.mennoniteinfoctr.com See ad, this page. * ♿

Old Order Amish Tours R10

63 Eastbrook Road, Route 896 North, Ronks, PA 17572. 717-299-6535. *



Amish Mennonite Information Center V9

Route 340, Old Philadelphia Pike, Intercourse, PA 17534. 717-768-0807. ♿

Amish Mennonite Information Center Z4

2667 Main Street, Morgantown, PA 19543. 1-610-286-9870. ♿

Downtown Visitors Information Center K9

South Queen and Vine Streets, Lancaster, PA. 717-397-3531. ♿

Ephrata Area Information Center S4

16 East Main Street, Suite 1, Ephrata, PA 17522. 717-738-9010. www.ephrata-area.org ♿

Lancaster County Visitors Center N8

501 Greenfield Road (Greenfield Road exit off Route 30), Lancaster, PA 17601. Official visitor information center for all of Lancaster County. 717-299-8901 or 800-PADUTCH. www.padutchcountry.com ♿

Lititz Springs Park

Welcome Center/Train Station K4
18 North Broad Street, Lititz, PA 17543. 717-626-8981. ♿

Mennonite Information Center P10

2209 Millstream Road, Lancaster, PA 17602. 717-299-0954. www.mennoniteinfoctr.com See ad, this page. ♿ ☆ ♿

Mount Joy Visitors Center C6

15 Marietta Avenue, Mount Joy, PA 17552. 717-653-0773. www.mountjoychamber.com ♿

Susquehanna Heritage Tourist & Information Center C9

445 Linden Street, Columbia, PA 17512. 717-684-5249. www.parivertowns.com ♿

Car Rentals/Transportation Services

Avis Rent-A-Car—Lancaster Airport L5

500 Airport Road, Suite K, Lititz, PA 17543. 717-569-3185. 800-831-2847. www.avis.com ♿

Conestoga Tours J7

1530 Commerce Drive, Lancaster, PA 17603. 717-569-1111. *

Friendly Transportation L9

625 East Orange Street, Lancaster, PA 17602. 717-393-6666. 800-795-3278. www.friendlytransportation.com ♿

Hertz Rent A Car L9

625 East Orange Street, Lancaster, PA 17602. 717-396-0000. 800-654-3131. www.friendlytransportation.com ♿

Red Rose Transit Authority K9

225 North Queen Street, Lancaster, PA 17603. Information Center at Queen Street Station. 717-397-4246. www.redrosetransit.com ♿

Convention Center Authority

Lancaster County Convention Center Authority

8 North Queen Street, Suite 1102, Lancaster, PA 17603. 717-399-7630. www.lccca.com



Airports

Lancaster Airport Authority L5

500 Airport Road, Lititz, PA 17543-9340. 717-569-1221. www.lancasterairport.com See ad, page 33. ♿

Harrisburg International Airport A3

One Terminal Drive, Middletown, PA 17057. 717-948-3900. 800-442-5387. www.flyhia.com ♿

Banks

Bank of Lancaster County

1-800-CALLBLC. www.blcnet.com \$

Fulton Bank

1 Penn Square, Lancaster, PA 17602. 717-291-2411. 800-Fulton4. \$

Wachovia Bank, N.A.

100 North Queen Street, Lancaster, PA 17603. 800-275-3862. \$

A Dramatic 3-Screen Feature

“Who are the Amish?”

MENNONITE INFORMATION CENTER

See us for Tours of the Amish Country

Guides Ride in Guest's Car

Open: Mon - Sat 8 - 5 April thru October
8:30 - 4:30 November thru March
Closed: Sunday's, New Years Day, Thanksgiving, Christmas

Also visit
The Biblical Tabernacle REPRODUCTION
Guided Tours of Full-Sized Model
See our ad on page 17

2209 Millstream Road, Lancaster, PA
717-299-0954 • 800-858-8320
www.mennoniteinfoctr.com
email: menninfoctr@desupernet.net

Need assistance with your travel planning and lodging?
Call 1-800-PADUTCH
OR VISIT US ONLINE AT
WWW.PADUTCHCOUNTRY.COM

Lancaster Lodging Reservations

1-800-PA-DUTCH
1-800-723-8824

Best Rates... Guaranteed!

Your single source for Lodging Reservations & Getaway Packages.

www.padutchcountry.com

Educational Facilities

Campus Central

Lancaster County, PA. 717-358-7166.
www.campuscentral.org ●

Franklin & Marshall College J8

P.O. Box 3003, Lancaster, PA 17604. Experience one of the nation's oldest and finest liberal arts colleges. Walk our historic campus in Lancaster City and enjoy our many cultural events. 717-291-3911.
www.fandm.edu ●

LCCTC Mount Joy Campus C5

432 Old Market Street, Mount Joy, PA 17552.
717-653-3000. www.LCCTC.org ●

Lancaster Bible College L7

901 Eden Road, Lancaster, PA 17601. 717-569-7071.
www.lbc.edu ●

Lancaster Campus—

Harrisburg Area Community College M9

1641 Old Philadelphia Pike, Lancaster, PA 17602.
717-358-2966. www.hacc.edu ●

Millersville University H11

P.O. Box 1002, Millersville, PA 17551-0302. Check out our exciting schedule of cultural events for 2006. Visit our beautiful campus and experience dynamic speakers, exciting entertainment, music, theater and art! Find Your Future. Here. 717-872-3024.
www.millersville.edu ●

Pennsylvania College of Art & Design K9

204 North Prince Street, P.O. Box 59, Lancaster, PA 17603. 717-396-7833. www.pcad.edu ●

Hospitals

Lancaster General Hospital K8

555 North Duke Street, Lancaster, PA 17602.
717-544-5511. www.LancasterGeneral.org ☒

Real Estate

Coldwell Banker Homesale Services Relocation

150 Farmington Lane, Lancaster, PA 17601.
800-965-2748. www.cbhomesale.com

ReMAX Associates of Lancaster

100 Foxshire Drive, Lancaster, PA 17601.
800-572-2338 ext. 3250. www.e-billr.com

Weichert Realtors—Engle & Hambricht

2250 Erin Court, Lancaster, PA 17601.
717-291-1041 ext. 3019. www.weichertEH.com

Retirement Communities

Homestead Village Retirement Community H8

1800 Village Circle, Box 3227, Lancaster, PA 17604.
717-397-4831. www.homesteadvillage.org ☒

Willow Valley Retirement Communities M12

600 Willow Valley Square, Lancaster, PA 17602.
800-770-5445. www.willowvalleyretirement.com ☒

Service Stations/Car Wash

Cloister Wash & Lube J7

1417 Manheim Pike, Lancaster, PA 17601.
717-509-5222. www.cloistercarwash.com ☒

Greenfield Food N' Fuel N8

1741 Hempstead Road, Lancaster, PA 17601.
717-392-1010 ☒

Train Service

Amtrak Railroad K8

55 McGovern Avenue, Lancaster, PA 17602.
800-USARAIL. www.amtrak.com ☒



VISITORS CENTER HOURS OF OPERATION

November 1, 2005–May 20, 2006
Monday–Saturday, 8:30 a.m.–5 p.m.
Sunday, 9 a.m.–5 p.m.

May 21, 2006–October 31, 2006
Monday–Saturday, 8 a.m.–6 p.m.
Sunday, 9 a.m.–5 p.m.

HOLIDAY WEEKENDS

Easter: Sunday, 10:30 a.m.–5 p.m.

Memorial Day Weekend, July 4th Weekend, Labor Day Weekend, Columbus Day Weekend

Friday and Saturday, 8 a.m.–7 p.m.
Sunday, 9 a.m.–5 p.m.

Closed Thanksgiving Day, Christmas Day, and New Years Day.

We're conveniently located just off Route 30 at the Greenfield exit.

Call us toll-free at 1-800-PA-DUTCH (1-800-723-8824), or locally at (717) 299-8901.

Don't forget to visit us online at www.PADUTCHCOUNTRY.COM

Your Taste of Lancaster County Begins Here!

Make the Visitors Center your first stop in Lancaster County, where you'll find informative brochures and maps, expert advice, coupons, tickets, and self-guided audio tours. Our friendly travel consultants are happy to help you reserve theatre tickets, suggest restaurants, find last-minute lodging, or find those special out-of-the-way places.

This year during the months of April through October, get a taste of Lancaster County with the Pennsylvania Dutch Country FlavorFest™ and new guided tours departing from the Visitors Center. Get insider tips on the Chef's Tour each Friday and Saturday morning. On Friday and Saturday afternoons, Farm to Fork: A Taste of the Amish Countryside Tour shows how those countryside crops turn into culinary delights. On Sundays, there's nothing sweeter than our Chocolate Covered Sundays Tour.

Call 1-800-PA-DUTCH, or visit our website to make your tour reservations.

Lancaster County
The Heart of Pennsylvania Dutch Country®





- Antiques Capital U.S.A. Y2**
Adamstown, PA 19501. www.antiquescapital.com 📍
- Cackleberry Farm Antique Mall W11**
3371 Lincoln Highway East, Route 30, Paradise, PA 17562. 717-442-8805. 📍
- Clock Tower Antiques at Stoudtburg X2**
Route 272 North, Adamstown, PA 19501.
717-484-2757. www.stoudtburg.com 📍
- Queen Anne's Lace Q8**
483 Mount Sidney Road, Lancaster, PA 17602.
717-380-5955. 📍
- Renningers Antique and Collectibles Market X2**
Route 272, Adamstown, PA 717-336-2177. 📍 *
- Stoudt's Black Angus Antique Mall X2**
Route 272 North, Adamstown, PA 19501.
717-484-2757. www.stoudtsbeer.com 📍
- Strasburg Antique Market S13**
207 Georgetown Road, Strasburg, PA 17579.
717-687-5624. 📍
- Ziegler's In The Country EE4**
Route 743, 3.5 miles South of Hershey. Antique Mall with more than 70 dealers. Personal Passions — a French Country Shop, Home Accessories Store, Classic Courtyard Statuary. 717-533-1662.
www.zieglersantiques.com 📍



- Bird-in-Hand Farmers Market S9**
Route 340 and Maple Avenue, Bird-in-Hand, PA 17505.
717-393-9674. www.birdinhandfarmersmarket.com 📍
- Cherry Hill Orchards K13**
400 Long Lane (Route 324 at Route 741), Lancaster, PA 17603. 717-872-9311. www.cherryhillorchards.com 📍
- Columbia Market D10**
3rd and Locust Streets, Columbia, PA 17512.
717-684-5767. 📍
- Country Barn Farm Market E9**
211 South Donnerville Road, Lancaster, PA 17603.
717-872-1554. www.countrybarmkt.com * 📍
- Green Dragon Farmers Market and Auction U3**
955 North State Street, Ephrata, PA 17522.
717-738-1117. www.greendragonmarket.com 📍
- Lancaster Central Market K9**
Penn Square, Lancaster, PA 17603-1599.
717-291-4723. 📍 ☆
- Olde Heritage Rootbeer U9**
3217 Old Philadelphia Pike (Route 340), Ronks, PA 17572. 717-768-8875. 📍



- Custom Roll Top Desks**
Lancaster County, PA 717-464-0812.
www.customrolltopdesks.com 📍
- Drumore Woodcraft**
Lancaster County, PA 717-548-2907.
www.amishfurniture.biz 📍
- Dutch Gold Honey, Inc.**
Lancaster, PA 17601. 717-393-1716.
www.dutchgoldhoney.com 📍
- Life is Simple Apparel and Gifts**
Lancaster County, PA. 717-390-3729.
www.life-is-simple.com 📍
- Walnut Springs Farm**
Berks County, PA. 610-779-5939.
www.walnutspringsfarm.biz 📍

Need assistance with your travel planning and lodging?
Call 1-800-PADUTCH
OR VISIT US ONLINE AT
WWW.PADUTCHCOUNTRY.COM



- Basketville of Paradise V11**
3361 Lincoln Highway (Route 30), Paradise, PA 17562.
717-442-9444. www.basketville.com See ad, this page. 📍
- The Deerskin Place S4**
283 Akron Road, Ephrata, PA 17522. 717-733-7624. 📍
- Good Food Outlet Store U6**
388 East Main Street, Route 23, Leola, PA 17540. Outlet for manufacturer of molasses, syrups, cooking oils, brown sugar, shoofly pie mix, pancake and waffle mix, funnel cake mix, Mrs. Schlorers mayonnaise, turkey syrup, ham glaze, nostalgic candy. Monday-Friday 7:00 a.m.-5:00 p.m. MC, V, D. 717-656-3486. 800-327-4406.
www.goldenbarrel.com 📍
- Keystone Pretzel Bakery & Outlet K6**
Flyway Business Park, 124 West Airport Road, Lititz, PA 17543. 717-560-1882. 800-338-2784.
www.keystonepretzels.com 📍
- Noritake Factory Store P10**
Tanger Outlet Center, Rte. 30, Lancaster, PA 17602.
717-396-1026. 1-888-5397. www.noritakechina.com 📍
- Rockvale Outlets Lancaster R10**
Routes 30 and 896, Lancaster, PA 17602. 717-293-9595.
www.RockvaleOutlets.Lancaster.com See ad, this page. 📍

The good life outlet priced!

Browse our vast collections of handcrafted home accessories, including uncommon baskets from around the world, tabletop accessories, shelf and storage baskets, laundry baskets and drying racks, nostalgic collectibles and classic wicker furniture. Most items are outlet priced!

BASKETVILLE
Since 1842

Paradise, Route 30E, 7 miles east of Lancaster.
(717) 442-9444. Open 7 days. Major credit cards accepted. We ship UPS. www.basketville.com

BIGGER BARGAINS. BETTER BRANDS. ALWAYS ROCKVALE OUTLETS

SHOP more than 100 factory direct stores offering bargain prices on the brand names you want including Black & Decker, Bose, Carter's, Casual Corner, GAP, Hartstrings, Jones New York, Little Me, Pottery Barn, SONY and more.

ROCKVALE OUTLETS LANCASTER

Located at the crossroads of Rtes. 30 & 896
www.rockvaleoutlets Lancaster.com
717-293-9595

1/2 Off The Lowest Ticket Price...



Rockvale Outlets
Rt 30 & 896, Lancaster, PA
VF Outlet Village
Rt. 222 to Rt. 422 E Exit N, Wyomissing Blvd. Reading, PA
1-800-772-8336, www.vffo.com

• VF Outlet • Liz Claiborne • Tommy Hilfiger

Big Dog Sportswear • dressbarn • Bass Outlet • Casual Corner Annex • Jones New York • Easy Spirit



Discover 75 Great Reasons to Visit the VF Outlet Village!
Real Outlets! Real Deals!

Saving money has never been this easy! Our historic complex provides a unique setting for shopping and family fun with everything you're looking for. From sportswear and lingerie to power tools and home furnishings, featuring VF Outlet's flagship store where you can save 1/2 off the lowest ticket price on brands like Vanity Fair, Lee, Wrangler, JanSport, Nautica and more.



Rt. 222 to Rt. 422 E, Exit N, Wyomissing Blvd. Reading, PA. 1-800-772-8336 www.vfovillage.com

• Naturalizer • OshKosh • Reebok • Hartstrings

Susquehanna Glass Factory Store D9

731 Avenue H, Columbia, PA 17512. 717-684-2155. 800-592-3646. www.theglassfactory.com ☎

Tanger Outlet Center P10

Route 30 East, Lancaster, PA 17602. Enjoy designer shopping at an average of 40% off retail prices every day, any day. Buy direct from Timberland, Nike Factory Store, Kenneth Cole, Izod, Coach, Tommy Hilfiger, Nautica, Banana Republic, Polo Ralph Lauren, Ecko Unlimited, Eddie Bauer, Gap Outlet, Brooks Brothers and more top designers. 717-392-7260. 800-408-3477. www.tangeroutlet.com ☎

VF Outlet R10

Rockvale Outlets, Routes 30 and 896, Lancaster, PA 17602. 717-293-1300. 800-772-8336. www.vffo.com See ad, this page. ☎

VF Outlet Village Y2

801 Hill Avenue, Reading, PA 19610. 610-378-0408. 800-772-8336. www.vfovillage.com See ad, this page. ☎

Wilbur Chocolate Factory Store K4

48 North Broad Street, Lititz, PA 17543. 717-626-3249 or 888-2WILBUR. www.wilburbuds.com ☎

WILTON ARMETALE® FACTORY TOUR AND STORE C6



Plumb and Square Streets, Mount Joy, PA 17552. Save up to 60% on seconds, closeouts and discontinued Wilton Armetale® metal dinnerware, serveware and giftware. Also reserve a factory tour! Store hours Monday-Saturday 9:30 a.m.-5:30 p.m., Sunday 12:00 p.m.-5:00 p.m. 866-wilton1. www.armetale.com ☎✳



Achenbach's Pastry Inc. U6

375 East Main Street, Leola, PA 17540. 717-656-6671. www.achenbachs.com ☎✳

Basket Accessories V9

3614 Old Philadelphia Pike, Intercourse, PA 17534. 15 years of quality hand-painted lids and accessories for the baskets made in Dresden, Ohio. Plastic basket sleeves, plastic protectors, and plastic planters, large selection of retired baskets. 717-768-7008. 866-461-5437. www.basketaccessories.com ☎

BINKLEY & HURST BROS. OUTBACK TOYS K4



101 West Lincoln Avenue, Lititz, PA 17543. A "MUST SEE" 3,000+ sq. ft. showroom with over 1,500 different die-cast farm toys and collectibles. Case, IH, Farmall, John Deere plus many others at great prices. A unique shopping experience for both youth and serious collectors! One of the largest displays on the East coast, and only minutes from downtown Lititz. Toll free 888-414-4705. www.outbacktoystore.com ☎

Bird-in-Hand Bake Shop R8

542 Gibbons Road, Bird-in-Hand, PA 17505. Homemade breads, potato rolls, pies, angel food cake, whoopie pies, shoofly pies, cookies and noodles. Hand-dipped ice cream. Locally made crafts. Gift items. Picnic area, playground and small animal petting zoo. 1-1/2 miles North of 340, turn at underpass. 2nd Road on right. "Just Plain Country." 717-656-7947 or 800-340-8558. ☎

Bird-in-Hand Bakery S9

2715 Old Philadelphia Pike (Route 340), Bird-in-Hand, PA 17505. PA Dutch baked goods from our homemade recipes. Shoofly pie, apple dumplings, snickerdoodles, fresh seasonal fruit pies and more! Order online anytime, or call for mail-order. 800-524-3429. www.bird-in-hand.com/store ☎

Bird-in-Hand Iron Works T9

3109 Old Philadelphia Pike (Route 340), Bird-in-Hand, PA 17505. 717-768-8101. www.birdinhandiron.com ☎

Boyd's Bear Country A9

75 Cunningham Road, Gettysburg, PA 17325. 1-866-367-8338. www.boydsbearcountry.com ☎

Bujno Pottery X2

Route 272, Adamstown, PA 19501. 717-484-2050. 800-296-0874. www.bujnopottery.com ☎

Burkholder's Fabric Shop R1

2155 West Route 897, Denver, PA 17517. 717-336-6692. ☎

Carson's in the Cornfields W5

245 Grist Mill Road, New Holland, PA 17557. 717-354-7343. www.carsonsinthecornfields.com ☎

Castle Gift Shop at DUTCH WONDERLAND® Q10

2249 Lincoln Highway East, Lancaster, PA 17602. 717-291-1888 or 1-866-FUNatDW. DutchWonderland.com See ad, page 17. ☎

Choo Choo Barn S13

Route 741 East, Strasburg, PA 17579. 717-687-7911. www.choochooobarn.com ☎

CHRISTMAS TREE HILL IN THE MANSION A9



2840 Whiteford Road, York, PA 17402. Just minutes west of the Susquehanna River off Route 30 (Mt. Zion exit). Christmas Tree Hill presents the most exciting and unique showcase of giftware, home accessories, collectibles, and Christmas in a beautiful historic mansion. 717-755-9290 or 800-222-6173. www.christmastreehill.com 📍

Christy's Quilt Shoppe V9

Intercourse Village Shoppes, Intercourse, PA 17534. 717-768-0044. www.christysquiltshoppe.com 📍

CityFolk on Gallery Row K9

146 North Prince Street, Lancaster, PA 17603. 717-393-8807. 📍

The Comic Store K8

Station Square, 28 McGovern Avenue, Lancaster, PA 17602. 717-397-8737. www.comicstorepa.com 📍

Country Creations R12

321 North Star Road, Strasburg, PA 17579. 717-687-8743. www.countrycreationspa.com 📍

Creative Wood Carvings V11

346 North Belmont Road, Gordonville, PA 17529. 717-768-3087. 📍

The Deerskin Leather Shop V9

Kitchen Kettle Village, Route 340, Intercourse, PA. 717-768-2780. 800-732-3538. www.kitchenkettle.com/deerskin See ad, this page. 📍

Demuth's Tobacco Shop L9

114 East King Street, Lancaster, PA 17602. 717-397-6613. www.demuthtobaccoshop.com 📍

Doneckers Fashion Store T4

409 North State Street, Ephrata, PA 17522. 717-738-9500. www.doneckers.com See ad, page 17. 📍

Doneckers Fine Furniture T4

100 North State Street, Ephrata, PA 17522. 717-738-9610. www.doneckers.com See ad, page 17. 📍

Dutch Baskets V9

3460 Old Philadelphia Pike, Intercourse, PA 17543. 717-768-7928. 866-PA-DUTCH. www.dutchbaskets.com 📍

Dutch Haven Shoo♥Fly Pie Bakery T10

2857A Lincoln Highway East, Ronks, PA 17572. 717-687-0111 or 717-687-7611. www.dutchhaven.com 📍

Dutchland Quilt Patch Intercourse V9

3461 Route 340, Intercourse, PA 17534. 800-411-3221. www.dutchlandquilts.com 📍

DUTCHLAND QUILT PATCH RONKS T10



2 Locations — 2851 Lincoln Highway East, Ronks, PA 17572 and Stagecoach Shops, Intercourse. Over 300 quilts, wall hangings, pillows, draperies, dolls, baskets, placemats, fabric, patterns and more. Specializing in custom orders. Open Monday–Saturday, 9–6. 800-411-3221. www.dutchlandquilts.com 📍

E.G. Woodcraft and Quilts S8

248A Monterey Road, Bird-in-Hand, PA 17505. Shop on an Amish farm. Handcrafted furniture, quilts and quillogs, crafts, baked goods made fresh daily. Take a hay ride or an Amish wagon tour of our farm and feed and pet farm animals. 717-656-1343. 📍

Eldreth Pottery S12

246 North Decatur Street (on Route 896), Strasburg, PA 17579. 717-687-8445. 888-811-4313. www.eldrethpottery.com See ad, page 22. 📍



Enhance your wardrobe with the beauty of Brighton!

You'll find a great selection of Brighton leather handbags, wallets, belts, shoes, watches and jewelry at The Deerskin Leather Shop.



Kitchen Kettle Village,
Intercourse & Park
City Center, Lancaster
800-732-3538

Esh's Handmade Quilts W9

3829 Old Philadelphia Pike, Gordonville, PA 17529. 717-768-8435. 📍

Evening Rise™ Fly Fishing Outfitters J6

1953 Fruitville Pike, Foxshire Plaza, Lancaster, PA 17601. 717-509-3636. www.theeveningrise.com 📍

Family Creations V9

3453 Old Philadelphia Pike, Route 340, Intercourse, PA 17534. 717-768-8651. www.family-creations.com 📍

Flower and Craft Warehouse Y6

196 Broad Street, Blue Ball, PA 17506. 717-355-9975. www.flowerandcraft.com 📍

Gem Garden E3

1575 Lebanon Road (Route 72) Manheim, PA 17545. 717-664-5522. 📍

GEORGE'S WOODCRAFTS INC. A7



9 Reichs Church Road, Marietta, PA 17547. We're building tomorrow's antiques today. Handcrafted solid walnut, cherry and oak wood furniture for kitchens, dining rooms, bedrooms, and offices. Tour George's unique woodworking shop, showroom and museum. Mon.–Sat., 9–5. 800-799-1685. www.georgeswood.com * 📍

The Gift House at Kitchen Kettle Village V9

Kitchen Kettle Village, Intercourse, PA 17534. 717-768-3228. 📍

Hand Made Quilts S10

102 North Ronks Road, Ronks, PA 17572. 717-687-0583. 📍

Hannah's Quilts Q9

216 Witmer Rd., Lancaster, PA 17602. 717-392-4524. 📍

Hill's Wood and Wool Shoppe T10

2906 Lincoln Highway East, Gordonville, PA 17529. 717-687-8567. 📍

Intercourse Canning Company V9

3612 East Newport Road (Route 772), Intercourse, PA 17534. Viewing the cannery through glass windows is free! Sample a variety of pickled veggies, jams, relishes, salsa, mustard, sauces, mixes, gourmet coffees and teas. Always something new cooking in our kitchen! 717-768-0156. www.intercoursecanning.com 📍 *

Save time and money by
buying your tickets online.

FIND OUT MORE AT
WWW.PADUTCHCOUNTRY.COM

J&B Quilts S12

157 North Star Road, Ronks, PA 17572. 📍

Jam & Relish Kitchen V9

Kitchen Kettle Village, Route 340, Intercourse, PA 17534. 717-768-8261. 800-732-3538. www.kitchenkettle.com See ad, page 19. 📍

Kauffman's Handcrafted Clocks T7

3019 West Newport Rd., Ronks, PA 17572. 717-656-6857. www.KauffmansHandcraftedClocks.com 📍

Kauffman's Hardware & Countrywares X6

201 East Main Street, Route 23, New Holland, PA 17557. 717-354-4606. 📍

Ken's Gardens W8

West Newport Road, Intercourse, PA 17534. 717-768-3922. www.kensgardens.com 📍

Lancaster Galleries K9

34 North Water Street, Lancaster, PA 17603. 717-397-5552. 800-688-5572. www.lancastergalleries.com 📍

Lapps Coach Shop V9

3572 West Newport Road, Intercourse, PA 17534. Locally handcrafted furniture, rocking horses, express wagons, hope chests. Hickory, oak, cherry rockers, and much more. Open Monday-Saturday, Closed Sunday. Can ship UPS. Call for free brochure. 717-768-8712. www.lappscoachshop.com 📍

Lapp's Quilts & Craft Shop S12

206 North Star Road, Ronks, PA 17572. 717-687-8889. 📍

Lapp's Wooden Toys T10

3006 Irishtown Road, Ronks, PA 17572. 717-768-7243. 📍

Leaman Place Furniture V11

3314 Lincoln Highway East, Paradise, PA 17562. 717-768-0215. www.leamanplacefurniture.com 📍

Martin's Chair, Inc. W6

124 King Court, New Holland, PA 17557. 717-355-2177. www.martinschair.com 📍

Miller's Smorgasbord Bakery S10

2811 Lincoln Highway East (Route 30), Ronks, PA 17572. 717-687-6621. www.millerssmorgasbord.com See ad, page 36. 📍

Miller's Smorgasbord Gift Shop S10

2811 Lincoln Highway East (Route 30), Ronks, PA 17572. 717-687-6621. www.millerssmorgasbord.com See ad, page 36. 📍

Miss-Ellaneous T10

2860 Lincoln Highway East, Ronks, PA 17572. 717-687-6580. 📍

MORTON FINE FURNITURE T6



30 South Hershey Avenue, Leola, PA 17540. Furniture created by professional craftspeople with a passion for detail and respect for the individuality of the wood's color and grain. Simply inspired with quality you expect. 717-656-3799, toll-free 877-656-3799. www.mortonfinefurniture.com 📍

Mt. Hope Estate Winery & Gift Shop E3

83 Mansion House Road, Route 72 and PA Turnpike Exit 266, Manheim, PA 17545. 717-665-7021. www.PaRenFaire.com 📍 ✨

Mrs. Penn's Shoppe S13

2 West Main Street, Strasburg, PA 17579. 717-687-8855. www.mrspenn.com 📍

Noah's Landing® R10

Rockvale Square Outlets 35 South Willowdale Drive, Lancaster, PA 17602. 717-390-8572. 📍

The Old Candle Barn V9

3551 Old Philadelphia Pike, Intercourse, PA 17534. 717-768-8926. www.oldcandlebam.com ✨ 📍

THE OLD COUNTRY STORE V9



3510 Old Philadelphia Pike, Intercourse, PA 17534. Landmark store featuring crafts by 350 local crafters, "Best Quilts—Best Prices," thousands of bolts of fabric. Selected as "One of the Top 10 Quilt Stores in the Nation" by *Quilt Sampler Magazine*. Includes the nationally known People's Place Quilt Museum. 800-828-8218. www.theoldcountrystore.com 📍

Olde Mill House Shoppes P10

105 Strasburg Pike, Lancaster, PA 17602. 717-299-0678. www.oldemillhouse.com 📍

Park City Center J7

Route 30 at Harrisburg Pike Exit, Lancaster, PA 17601. 717-299-0010. www.parkcitycenter.com 📍

People's Place Book Shoppe &

P. Buckley Moss Gallery V9

3518 Old Philadelphia Pike, Intercourse, PA 17534. Informational books about Amish and Mennonite life, cookbooks, gift, local, and children's books. Gallery devoted to work of nationally-known artist P. Buckley Moss includes prints, framed work and more. 800-390-8436. 📍

Pepper Lane Fudge & Sweets V9

Kitchen Kettle Village, Route 340, Intercourse, PA 17534. 717-768-3740. 1-866-PLFUDGE. www.pepperlanefudge.com 📍

The Pilot Shop at Airways M6

Lancaster Airport, 520 Airport Road, Lititz, PA 17543. 717-569-4996. 800-247-8294. www.flyairways.com 📍

Plain & Fancy Farm Village of Shops U9

3121 Old Philadelphia Pike, Route 340, Bird-in-Hand, PA 17505. 717-768-4400. www.PlainAndFancyFarm.com See ad, page 36. 📍

Quilt Shop at Miller's Smorgasbord T10

Route 30, 1 mile east of Route 896. 717-687-8480 ext. 49. www.QuiltShopAtMillers.com See ad, page 33. 📍

Riehl's Quilts & Crafts T7

247 East Eby Road, Leola, PA 17540. 717-656-0697. 📍

HOW TO LOCATE PROPERTIES ON THE MAP

- Information Centers
- Service Stations/Car Wash
- Attractions, Sightseeing/Tours
- Campgrounds
- Shops, Markets, and Outlets
- Restaurants
- Hospitals
- Lodging
- Libraries
- Retirement Communities
- Educational Facilities
- Transportation
- Banks
- Lancaster County Heritage
- Golf
- Pet Friendly
- Bus Information Center
- Transportation Services
- Airports
- Train Stations

Handicap Facilities —

We suggest you contact the businesses you are planning to visit to be sure they can accommodate your individual needs.

MC-Master Card, V-Visa, D-Discover, AX-American Express, DC-Diner's Club, CB-Carte Blanche, PC-Personal Checks, MAC-Debit Card, AC-Air Conditioning, DR-Dining Room, CTV-Color TV, CCTV-Color Cable TV, B-Bar, C-Cribs, P-Pets, EWS-Electric, Water, Sewer

A1-Z19 Refers to map location

Want up-to-date information about local events? Sign up for our eTravelGuide

AT
WWW.PADUTCHCOUNTRY.COM

Rohrer Seeds R9

2472 Old Philadelphia Pike, P. O. Box 250, Smoketown, PA 17576. Garden Perfect® Seed Co. Over 1,250 kinds of herb, vegetable, flower, cover crop, lawn, pasture, deer food plot seeds, and bulbs. Many organic and heirloom. 85 years of local use by the amish. Free catalog. 717-299-2571. www.rohrerseeds.com 🚗

Ruthie's Tee Company S9

2687 Old Philadelphia Pike, Bird-in-Hand, PA 17505. 717-392-4848. www.ruthiestee.com 🚗

S. Clyde Weaver Inc.

Smoked Meats & Cheese H6

5253 Main Street, East Petersburg, PA 17520. 717-569-0812 or 888-932-8374. www.sclydeweaver.com 🚗 ✂

Sam's Steins & Collectibles, Inc. Q9

2207 Lincoln Highway East, Lancaster, PA 17602. 717-394-6404. www.samssteins.com 🚗

The Smokehouse Shop V9

Kitchen Kettle Village, Route 340, Intercourse, PA 17534. 717-768-3805. 🚗

Smucker's Quilts U6

117 North Groffdale Road, New Holland, PA 17557. 717-656-8730. 🚗

The Springerle House S13

15 East Main Street, Strasburg, PA 17579. 717-687-8022. www.springerlehouse.com 🚗

Stoltzfus Meats & Deli W9

Cross Keys Village Center, Intercourse, PA 17534. 717-768-7287. www.stoltzfusmeats.com 🚗 ✂

Stoutburg Village & Shoppes X2

Route 272 North, Adamstown, PA 19501. 717-484-2757. www.stoutburgvillage.com 🌟 🚗

Strasburg Country Store & Creamery S13

Centre Square, 1 West Main Street, Strasburg, PA 17579. 717-687-0766. www.strasburg.com 🚗 ✂

Strasburg Rail Road Shops T13

At Strasburg Rail Road, Route 741 East, Strasburg, PA 17579. Shop at the Strasburg Rail Road. Train souvenirs. Railroad apparel. Railroad books and videos. Pennsylvania Railroad hobby headquarters. Huge collection of Thomas toys and merchandise. 717-687-7686. 877-475-8990. www.strasburgrailroadstore.com See ad, page 23. 🚗

Strasburg Toys & Collectibles R12

350 Hartman Bridge Road, Route 896, Ronks, PA 17572. 717-687-9288. www.strasburgtoys.com 🚗

Strasburg Train Shop S13

Route 741 East, Box 130-PO5, Strasburg, PA 17579. Your model railroading headquarters, with over 2,000 square feet of model trains and supplies. From starter sets to locomotives, cars and thousands of detail parts in all major gauges and all major brands. We mail order, too! 717-687-0464. 800-450-2920. www.etrainshop.com See ad, page 16. 🚗

Sylvia Petersheim's Quilts & Crafts R9

2544 Old Philadelphia Pike, Bird-in-Hand, PA 17505. 717-392-6404. 🚗

Ten Thousand Villages Store,

Restaurant & Oriental Rugs S3

Route 272, Ephrata, PA 17522. Fairly traded crafts from over 35 developing countries, including jewelry, clothing, pottery, musical instruments and ethnic art. Hand-knotted Oriental rugs made by fairly paid adults. Restaurant serves different country's cuisine each week. 717-721-8400.

www.ephrata.tenthousandvillages.com 🚗 ✂

Thomas' Trackside Station S13

Route 741 East, P.O. Box 130-T05, Strasburg, PA 17579. Lancaster County's only officially licensed "Thomas' & Friends™" store! We've got the largest selection at the lowest prices! Shop our store or online. 717-687-7911. 800-450-2920. www.ttstation.com See ad, page 16. 🚗

Tin 'N' Treasures V9

3577 West Newport Road, Kitchen Kettle Village, Intercourse, PA, 17534. 717-768-0681. www.tinntreasures.com 🚗

Village of Dutch Delights T10

2847 Lincoln Highway East, Ronks, PA 17572. 717-687-8826. www.outhousepa.com 🚗

Village Pottery V9

3518 Old Philadelphia Pike, Intercourse, PA 17534. Ceramic creations ranging from functional mugs, casseroles and pitchers to more imaginative vases and pots by numerous fine potters. Featuring beautiful redware by Ned Foltz. Also local chocolates, vinegars and dressings. 800-390-8436. www.villagepottery.cc 🚗

Village Quilts V9

At Kitchen Kettle Village, Route 340, Intercourse, PA. Imagine being able to select your quilt or textile art from an authentic heirloom quilter — personally signed and dated to show it is one-of-a-kind! Monday–Saturday, 9:00 a.m.–5:00 p.m. 717-768-2787. www.kitchenkettle.com/quilts 🚗

Wenger Gallery S10

2811A Lincoln Highway East, Ronks, PA 17572. 717-687-5221. www.wengergallery.com 🚗

Will-Char ♦ The Hex Place® U11

3056 Route 30 East, Paradise, PA 17562. 717-687-8329. www.hexsigns.com 🚗

Winkie's Toy & Hobby K5

1030 Lititz Pike, Shoppes at Kissel Village, Lititz, PA 17543. 717-625-3661. www.winkies.com 🚗

Witmer's Quilt Shop V6

1070–76 West Main Street, New Holland, PA 17557. Route 23 between Bareville and New Holland. 150 new quilts. Also antique quilts. See why people say "Oh, my goodness!" MC, V, AX. Monday and Friday, 8–8; Tuesday, Wednesday, Thursday, Saturday, 8–6 (closed Sunday and religious holidays). 717-656-9526. 🚗

Wolf Rock Furniture V11

3533 Lincoln Highway East, Kinzers, PA 17535. 717-442-8990. 🚗

Zimmerman Marketplace T6

254 East Main Street, Leola, PA 17540. 717-656-8290. www.zimmermanmarketplace.com 🚗

Why drive when you can...

Fly to Lancaster County!

Let the relaxation begin the minute you leave home. Lancaster Airport is close to all that awaits you in the Pennsylvania Dutch Country.

Hertz and Avis car rentals on-site


Only minutes from hotels and bed and breakfasts

Ask your travel agent or contact US Airways reservations:

 (800) 428-4322 or usairways.com. (Use airport city code LNS.)

Take the EASY way. 

FLY LANCASTER AIRPORT



The Quilt Shop At Miller's

Quality-Selection-Value

Hundreds of handmade quilts, quilrows, wall hangings & gift items from Amish, Mennonite & other local artisans

Spacious, well-lit showroom

Meticulous, professional, friendly staff

Open 7 days

Rt 30, one mile east of Rt 896

www.QuiltShopAtMillers.com

717-687-8480 ext 49

Arthur's Restaurant L7

Best Western Eden Resort, 222 Eden Road, Lancaster, PA 17601. 717-569-6444. www.edenresort.com
See ad, inside front cover. ✕ ☒

Ashton's Bagel Café S10

2801 Lincoln Highway East (Route 30), Ronks, PA 17572. 717-687-8929 ✕

Auntie Anne's Café—Intercourse V9

3474 Old Philadelphia Pike, Intercourse, PA 17562. 717-768-0098. www.auntieannes.com ✕

Bird-in-Hand Family Restaurant & Smorgasbord S9

2760 Old Philadelphia Pike, Route 340, Bird-in-Hand, PA 17505. 717-768-1500. www.bird-in-hand.com/restaurant See ad, page 38. ✕ ☒

The Bistro at Netherlands Inn and Spa S12

One Historic Drive, Strasburg, PA 17579. The Bistro serves a fresh array of dishes in a casual, contemporary atmosphere, with light fare and cocktails available in the lounge. A fun place to eat lunch, dinner or get together with friends or family—The Bistro is the ideal place to unwind after a fun day in Lancaster. 800-872-0201. www.netherlandsinn.com See Ad, page 43. ✕ ☒

BLACK ANGUS RESTAURANT AND BREW PUB X2



Route 272 North, Adamstown, PA 19501. Over 43 years serving the finest aged steaks, fresh seafood, raw bar, artisanal breads and domestic cheeses. *Wine Spectator* Award Winner with over 130 vintage and boutique wine selections. Pub and lite fare featuring award-winning, hand-crafted ales and lagers. Open daily. Brewery tours Saturday 3:00 p.m., Sunday 1:00 p.m. 717-484-4386. www.stoudtsbeer.com ✕ ✕

Boyd's Bear Country A9

75 Cunningham Road, Gettysburg, PA 17325. 1-866-367-8338. www.boydsbearcountry.com ✕ ☘ ✕

The Brasserie N9

1679 Lincoln Highway East, Lancaster, PA 17602. 717-299-1694. www.lancaster-brasserie.com ✕

Bube's Brewery C6

102 North Market Street, Mount Joy, PA 17552. 717-653-2056. www.bubesbrewery.com ✕ ☆

Cactus Willies Steak Buffet G9

Regency Mall, 101 Roherstown Road, Lancaster, PA 17603. 717-391-7060. 800-232-4676. www.cactuswillies.com ✕

Café Chocolate of Lititz L4

38 East Main Street, Lititz, PA 17543. 717-626-0123. www.chocolatelititz.com ✕

Cameron Estate Inn & Restaurant B6

1855 Mansion Lane, Mount Joy, PA 17552. 717-492-0111. 888-422-6376. www.cameronestateinn.com ✕ ☒

Carr's Restaurant K9

50 West Grant Street, Lancaster, PA 17603. 717-299-7090. www.carrsrestaurant.com ✕

Christopher's Casual Dining and Spirits K7

Travelodge, 1492 Lititz Pike, Lancaster, PA 17601. 717-396-8991. www.chrisdine.com ✕ ☒

Clyde's Café J6

Hilton Garden Inn Lancaster, 101 Granite Run Drive, Lancaster, PA 17603. 717-560-0880. www.lancastergardeninn.com ✕

Coleman's Ice Cream and Lancaster Legal Bagel Q9

2195B Old Philadelphia Pike, Lancaster, PA 17601. 717-394-8815. www.colemansicecream.com ✕

Conestoga Restaurant and Bar L9

1501 East King Street, Lancaster, PA 17601. 717-393-0290. www.theconestoga.com ✕

Country Table Restaurant Bake Shoppe & Deli D6

740 East Main Street, Mount Joy, PA 17552. 717-653-4745. www.countrytablerestaurant.com ✕

Doc Holliday's Steakhouse J8

931 Harrisburg Pike, Lancaster, PA 17603. 717-397-3811. www.dhollidays.com ✕

Doneckers Restaurant T4

333 North State Street, Ephrata, PA 17522. 717-738-9501. www.doneckers.com See ad, page 17. ✕ ☘

Dugal's Station II Y12

5267 Lincoln Highway East, Box 370, Gap, PA 17527. 717-442-3200. ✕

Encore Lounge L7

Best Western Eden Resort, 222 Eden Road, Lancaster, PA 17601. 717-569-6444. www.edenresort.com ✕ ☒

The Family Cupboard Restaurant & Buffet T9

3029 Old Philadelphia Pike, Bird-in-Hand, PA 17505. Route 340 between Bird-in-Hand and Intercourse. 717-768-4510 or 800-293-3014. Amish and Mennonite home cooking served buffet or menu. Open Mon.–Sat., 6 a.m.–8 p.m. Large gift shop featuring local crafts and toys. Groups welcome. www.familycupboard.com ✕ ☘

Friendly's P9

2150 Lincoln Highway East (Route 30), Lancaster, PA 17602. 717-299-6184. www.friendlys.com ✕

Garfield's Restaurant L7

Best Western Eden Resort, 222 Eden Road, Lancaster, PA 17601. 717-569-5454. www.edenresort.com See ad, inside front cover. ✕ ☒

General Sutter Restaurant K4

14 East Main Street, Lititz, PA 17543. 717-626-2115. www.generalsutterinn.com ✕ ☒

Gibraltar Mediterranean Grill J8

931 Harrisburg Pike, Lancaster, PA 17603. 717-397-2790. www.dhollidays.com ✕

Good 'N Plenty Restaurant R9

Route 896, Smoketown, PA 17576. 717-394-7111. www.goodnplenty.com See ad, page 35. ✕ ☘



We've created the perfect vacation recipe.

Looking for a hearty **Grand Smorgasbord** or fabulous **Ala Carte Menu**? Want comfortable and affordable **overnight lodging** that is located on 23-acres in the heart of popular Lancaster County attractions? Then visit Hershey Farm Restaurant & Inn where the dining selections are endless, the night's stay is cozy and the **shopping** is plentiful!

Hershey Farm
Restaurant & Inn
Just past Rockvale Outlets
on Rte. 896
STRASBURG • 800-748-8042
*Located next to Sight & Sound®
Millennium Theatre™*
www.hersheyfarm.com

Greenfield Food N' Fuel N8

1741 Hempstead Road, Lancaster, PA 17601.
717-392-2020. ☒ ☒

Hershey Farm Restaurant & Inn R11

Route 896, P.O. Box 159, Strasburg, PA 17579.
800-748-8042 or 717-687-8635. www.hersheyfarm.com
See ad, page 34. ☒ ☒ ☒

**HERSHEY'S CHOCOLATE WORLD®—Courtyard
Cafe Food Court and Kit Kat Cafe DD2**

800 Park Boulevard, Hershey, PA 17033. 717-534-4900.
☒ ☒

HISTORIC REVERE TAVERN U11



3063 Lincoln Hwy. E. (US 30), Paradise, PA 17562.
Historic inn built in 1740. Casual dining in colonial
atmosphere with fireplaces. Specializing in steaks
and seafood. Cocktails and wines. Children's menu.
Open daily, reservations accepted. MC, V, D, CB, DC, AX.
717-687-8601. www.reveretavern.com ☒ ☒ ☒

Intercourse Village Restaurant V9

Routes 340 and 772, Intercourse, PA 17534. A small
Amish village restaurant with good home cooking:
"Where the Locals Eat." Serving breakfast, lunch,
dinner. Open Monday–Saturday, 6 a.m.–8 p.m.
V, MC, AX. 717-768-3637. 800-717-6202.
www.amishcountryinns.com ☒ ☒ ☒

The Iron Horse Inn S13

135 East Main Street, Strasburg, PA 17579. 717-687-
6362. 1-866-666-6362. www.ironhorsepa.com ☒

Isaac's Restaurant & Deli N8

The Shoppes at Greenfield, 565 Greenfield Road,
Lancaster, PA 17601. 717-393-6067. www.isaacsdeli.com ☒

Isaac's Restaurant & Deli S13

The Shops at Traintown, Route 741 East, Strasburg, PA
17579. 717-687-7699. www.isaacsdeli.com ☒

Isaac's Restaurant & Deli K9

25 North Queen Street, Lancaster, PA 17603.
717-394-5544. www.isaacsdeli.com ☒

J.T. Ashley's N8

Holiday Inn Visitors Center, 521 Greenfield Road,
Lancaster, PA 17601. 717-299-2551.
www.ichotelsgroup.com ☒ ☒

The Kling House Restaurant V9

Kitchen Kettle Village, Route 340, Intercourse, PA.
Breakfast or lunch in the home of Kitchen Kettle Village.
Now a Pennsylvania bistro with simmering flavors of our
jams and relishes in unique dishes. Open Mon–Sat.,
year round. 717-768-2746. www.kitchenkettle.com
See ad, page 19. ☒ ☒ ☒ *

Kreider Farms Restaurant F5

1461 Lancaster Road, Manheim, PA 17545.
717-665-5039. www.kreiderfarms.com ☒ ☒

La Fleur Restaurant Q10

Continental Inn, 2285 Lincoln Highway East,
Lancaster, PA 17602. 717-299-0421.
www.continentalinn.com ☒ ☒

The Lancaster Brewing Company L8

302 North Plum Street, Lancaster, PA 17602.
717-391-6258. www.lancasterbrewing.com ☒

Lee E. Brenner Dining Car T13

Strasburg Railroad, Route 741 East, Strasburg, PA
17579. 717-687-8628. www.strasburgrailroad.com ☒

Legends Q10

Lancaster Host Resort, 2300 Lincoln Highway East,
Lancaster, PA 17602. 717-299-5500 or 800-233-0121.
www.lancasterhost.com. See ad, page 43. ☒ ☒

Lemon Grass Thai Restaurant R10

2481 Lincoln Highway East, Rt. 30, Lancaster, PA 17602.
717-295-1621. www.thailemongrass.com ☒

Need assistance with your
travel planning and lodging?
Call 1-800-PADUTCH
OR VISIT US ONLINE AT
WWW.PADUTCHCOUNTRY.COM

A Dining Experience You Won't Want To Miss.

Specializing In Pennsylvania Dutch Food

Delicious, authentic Pennsylvania Dutch cooking is yours to enjoy at Good 'n Plenty Restaurant. Our remodeled two-story dutch farmhouse provides the perfect setting for a unique dining experience.

Staffed with local cooks who have devoted years to preparing delicious country style cooking, Good 'n Plenty offers a dining experience you won't want to miss.

Serving Daily

(Except Sunday)

11:30 am - 8:00 pm

Rt 896, Smoketown, PA
717-394-7111
www.goodnplenty.com

While in the area,
be sure to visit...

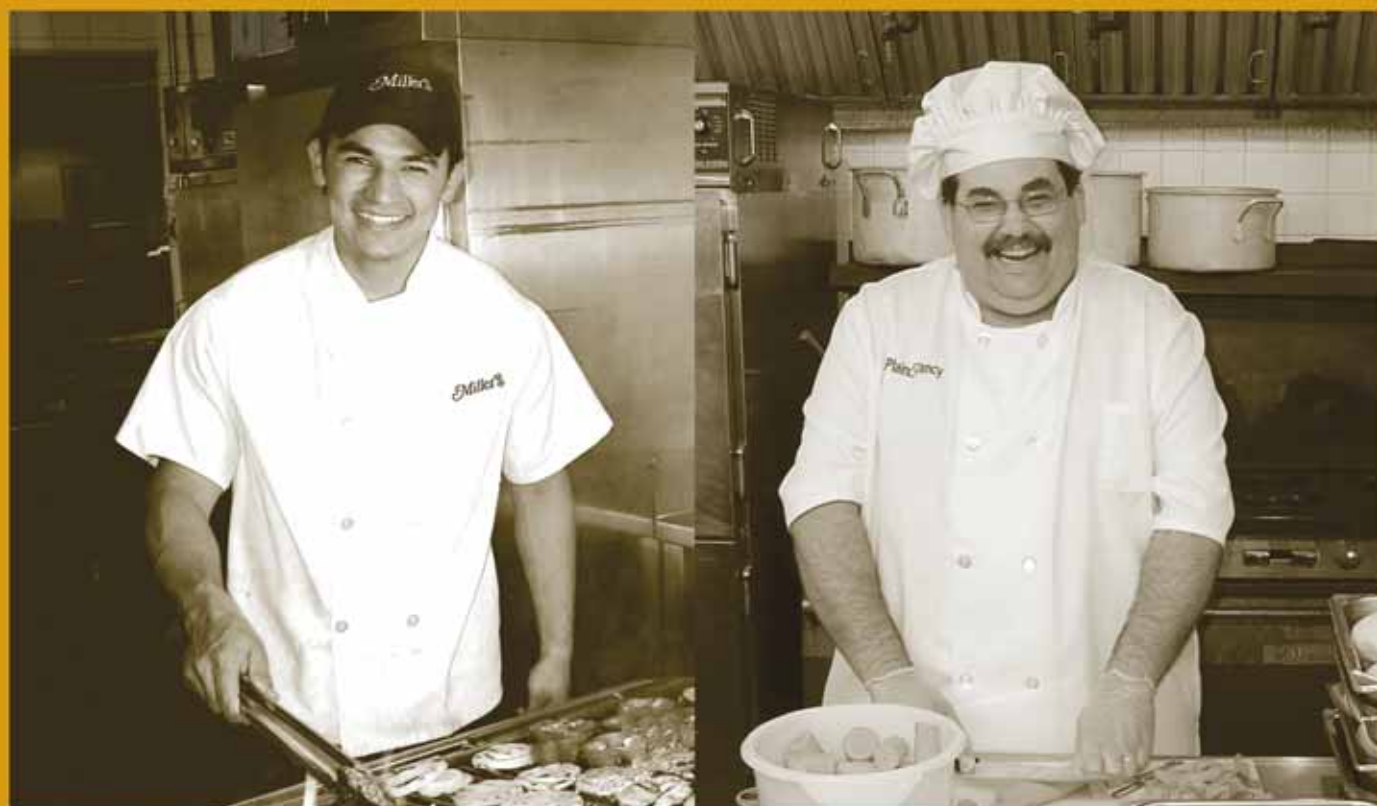
VISIT OUR STANDS FOR:

Fresh Fruits & Vegetables, Jams & Jellies, Candy, Meats & Cheeses, Homemade Fudge, Homemade Baked Goods, Poultry & Eggs, Potato Chips, Pretzels & Nuts, Quilts & Handcrafts, Snyder's Woodcrafts & Furniture and plenty more to enjoy.

	WED	THURS	FRI	SAT
JAN			*	*
FEB			*	*
MAR			*	*
APR	*		*	*
MAY	*		*	*
JUNE	*		*	*
JULY	*	*	*	*
AUG	*	*	*	*
SEPT	*	*	*	*
OCT	*	*	*	*
NOV	*	*	*	*
DEC	*	*	*	*

MARKET OPEN ON DAYS MARKED.

Rt. 340, Bird-In-Hand, PA



Real foodies start from scratch.

There are 235,000 chain restaurants in the United States. Many order food from their headquarters and give you meals that are nice and predictable. At Miller's and Plain & Fancy Farm, we're foodies. We start from scratch. We've done it this way since 1929, creating meals that you want to tell your friends about. In Pennsylvania, only Miller's and Plain & Fancy are:

- **ServSafe Winner & First Runner Up** (Pennsylvania Restaurant Association Food Safety Award)
- **FlavorFest Signature Tour Sites**
- **AAA Recommended, and**
- **Gutsy Enough to Offer Kitchen Tours**



Miller's Smorgasbord, Bakery, Gallery, Specialty & Quilt Shops **Take \$2 Off Monday-Friday, Noon-4pm •OR• Take \$1 Off Anyday, Anytime**

Valid for Each Adult Traditional Smorgasbord Dinner. Present this magazine when seated to take advantage of offer. Valid 3/15/06-12/31/06. Not valid with other offers or special rates. WkdayEB PLU 576 Anyday/time PLU 573 New Menu Starting under \$10. Route 30 (map location S10). Open 7 Days. 717-687-6621.



Plain & Fancy Farm, Restaurant and AmishView Inn & Suites

Family-Style Feast: Includes full course dinner, desserts & beverages for Only \$14.95.

Pennsylvania Winner: USA Today's 50 Great Plates. New lunch/dinner menus. Open 7 Days. 717-768-4400. Route 340 between Bird-in-Hand & Intercourse, an AAA Scenic ByWay (map location U9).

Find it all at the farm, including...The Amish Experience Theater, Homestead and Farmland Tours, Buggy Rides, Country Store, Shops and AmishView Inn & Suites, Lancaster's brand-new, elegantly appointed boutique hotel.



Kitchen Tours at both restaurants are tentatively scheduled to run May-October. Reservations required. Days and hours will vary. Call or visit our websites for details. 100% of the \$5 adult & \$3 child fee goes to feed the hungry via the Salvation Army.



Reservations Welcome. Days, hours, menus, prices may vary. Get the whole story at:

www.Millers1929.com www.PlainAndFancyFarm.com www.AmishViewInn.com

THE LOG CABIN RESTAURANT P5



6 miles north of Lancaster just off Route 272. Nestled in a quiet wooded setting is Lancaster County's acclaimed fine dining legend. Savor the art of classic American cuisine amid warmth, intimacy, and casual elegance. Discover the secret local connoisseurs have known for years. Extensive wine list. Recipient of Wine Spectator Award of Excellence. MC, V, AX. 717-626-1181. www.logcabinrestaurant.com ✕

Lombardo's Italian-American Restaurant K8

216 Harrisburg Pike, Lancaster, PA 17603. The Lombardo family has served homemade Italian entrees and freshly baked desserts since 1946. A full selection of wines and cocktails awaits. Children welcome. Lunch and dinner daily. Closed Sunday. 717-394-3749. www.lombardosrestaurant.com ✕

Mazzi Designed Dining R6

Leola Village Inn & Suites, 46 Deborah Drive, Leola, PA 17540. 717-656-8983. www.mazzidesigneddining.com. ✕ ☒

McDonald's P9

2090 Lincoln Highway East, Route 30, Lancaster, PA 17602. 717-394-8957. ✕

Miller's Smorgasbord S10

Route 30, 1 mile east of Route 896. 717-687-6621. www.MillersSmorgasbord.com See ad, page 36. ✕ ☒

Ming Court Buffet J6

1858 Fruitville Pike, Kmart Plaza, Lancaster, PA 17601. 717-560-0998. www.mingcourtbuffet.com ✕

The Olde Greenfield Inn N8

595 Greenfield Road. Located 1/4 mile from Visitors Center. 717-393-0668. www.theoldegreenfieldinn.com See ad, this page. ✕ ☒

Oregon Dairy Country Restaurant & Buffet N6

2900 Oregon Pike, Lititz, PA 17543. 717-661-6804. www.oregondairy.com ✕

Palm Court Sunday Brunch L12

Willow Valley Resort, 2416 Willow Street Pike, Lancaster, PA 17602. 717-464-2711. www.willowvalley.com ✕ ☒

Plain & Fancy Farm Restaurant U9

Route 340, Bird-in-Hand, PA 17505. 717-768-4400. www.PlainAndFancyFarm.com See ad, page 36. ✕ ☒

Poppy's Pizza and Grill P9

2213 Lincoln Highway East, Lancaster, PA 17602. 717-397-7499. ✕

The Pressroom Restaurant K9

26-28 West King Street, Lancaster, PA 17603. 717-399-5400. www.pressroomrestaurant.com ✕

Quiznos Sub P9

2102 Lincoln Highway East, Lancaster, PA 17602. 717-392-6060. www.quiznos.com ✕

Rita's Italian Ice N9

1951 Lincoln Highway East, Lancaster, PA 17602. 717-394-2300. ✕

Robert Fulton Room R10

Fulton Steamboat Inn, Routes 30 and 896, Strasburg, PA 17575. 717-299-9990. www.fultonsteamboat.com ✕ ☒

Shenanigans Restaurant and Lounge M6

Quality Inn and Suites, 2363 Oregon Pike, Lancaster, PA 17601. 717-569-0477. www.choicehotels.com/hotel/pa429 ✕ ☒

Sherwood Knoll Restaurant Comfort Inn E8

500 Centerville Road, Lancaster, PA 17601. 717-898-2431. www.comfortlanaster.com ✕ ☒

Stockyard Inn Restaurant K8

1147 Lititz Pike (Route 501), Lancaster, PA 17601. Lancaster's landmark steak and seafood house built in 1750, the original inn once owned by president Buchanan. Relaxed dining combining old world charm with innovative American Cuisine. Casual dress. 717-394-7975. www.stockyardinn.com ✕

Stoltzfus Farm Restaurant W9

1/4 mile East on Route 772. 717-768-8156. A family-style meal served at the privacy of your own table in the quaint atmosphere of the Stoltzfus family homestead. Open daily 11:30 a.m.—8:00 p.m. except Sunday, April through October. Open Fridays and Saturdays in November. www.stoltzfusmeats.com ✕

Strasburg Country Store & Creamery S13

Centre Square, 1 West Main Street, Strasburg, PA 17579. 717-687-0766. www.strasburg.com ✕ ☒

Symposium Restaurant F9

125 South Centerville Road, Lancaster, PA 17603. 717-391-7656. www.symposiumrestaurant.com ✕

Taste at the Brunswick K9

Hotel Brunswick, Queen and Chestnut Streets, Lancaster, PA 17603. 717-397-4800. www.hotelbrunswick.com ✕ ☒

Vistas Restaurant Q10

Lancaster Host Resort, 2300 Lincoln Highway East, Lancaster, PA 17602. 717-299-5500 or 800-233-0121. www.lancasterhost.com. See ad, page 43. ✕ ☒

WILLOW VALLEY FAMILY RESTAURANT L12



2416 Willow Street Pike, Lancaster, PA 17602. 717-464-2711. 3 miles south of Lancaster on Route 222. Homestyle smorgasbords (breakfast, lunch and dinner served daily). Palm Court Sunday Brunch (voted Lancaster's best), bakery, family-style meals (20 or more guests). Come join us in celebrating our 40th anniversary. Enjoy a meal or stay the night. www.willowvalley.com See ad, inside back cover. ✕ ☒

Willow Valley Terrace Restaurant L12

Willow Valley Resort, 2416 Willow Street Pike, Lancaster, PA 17602. 717-464-2711. www.willowvalley.com See ad, inside back cover. ✕ ☒

Windmill Family Restaurant & Gift Shop Z5

Routes 10 and 23, Morgantown, PA 19543. 610-286-5980. www.windmillfamrestaurant.com ✕

Your Place Restaurant & Pub P9

2133 Lincoln Highway East, Lancaster, PA 17602. 717-394-8997. ✕ ☒

Need assistance with your travel planning and lodging?
 Call I-800-PADUTCH
 OR VISIT US ONLINE AT
WWW.PADUTCHCOUNTRY.COM

THE OLDE
Greenfield
 INN

Finding the perfect dining experience is not a journey...

Whatever the occasion, you'll discover The Olde Greenfield Inn is your dining destination of choice.

...it's a destination.

595 Greenfield Road, Lancaster, 717-393-0668
www.theoldegreenfieldinn.com

★★★ AAA Recommended
 "Award Of Excellence"—WINE SPECTATOR



Akron Motel Q5

116 South 7th Street (Route 272), Akron, PA 17501.
717-859-1654 or 877-274-6009. www.motelakron.com

America's Best Inn of Lancaster Q10

2250 Lincoln Highway East, Lancaster, PA 17602. 717-393-5499 or 877-877-5622. www.bestinnlancaster.com

Amish Country Motel T9

3013 Old Philadelphia Pike (Route 340), Bird-in-Hand, PA 17505. 800-538-2535. www.stayatthecenter.com
See ad, this page.

Amish Lanterns Motel S12

Route 896 South of Route 30, Strasburg, PA 17579.
1-888-900-2555. www.amishmotel.com

**AMISHVIEW INN & SUITES AT
PLAIN & FANCY FARM U9**



3125 Old Philadelphia Pike (Rt. 340), Bird-in-Hand, PA 17505. Elegant accommodations. Postcard setting. Indoor pool, spa, fitness center, whirlpools and fireplaces make us perfect for an intimate getaway, family vacation or corporate retreat. Complimentary breakfast, high-speed internet, and kitchenettes in every room. Non-smoking facility. Value packages. Located on an AAA scenic byway. 866-735-1600. www.AmishViewInn.com

Beaver Creek Farm Cabins T13

2 Little Beaver Road, Strasburg, PA 17579.
717-687-7745. www.beavercreekfarmcabins.com

Student Group Travel!

For more information and to receive your FREE Student Group Tour Idea Guide
Call: 1-800-220-4757

BEST WESTERN EDEN RESORT INN & SUITES L7



Route 30 at Oregon Pike Exit, Lancaster. 276 rooms including 40 residential style suites and New for 2006—72 two-room suites, ideal for families. Two restaurants and lounge, three pools including heated indoor pool and whirlpool, ultra modern fitness center, children's playground and much more. AAA/AARP discount. Kids under 18 stay free! AAA♦♦♦♦. 717-569-6444 or 888-477-7754. www.EdenResort.com
See ad, inside front cover.

Best Western Inn at Millersville H11

101 Shenks Lane, Millersville, PA 17551.
717-872-4600 or 800-528-1234.
www.bestwestern.com/theinnatmillersville

**BEST WESTERN INTERCOURSE
VILLAGE INN & RESTAURANT V9**



Routes 340 and 772, P.O. Box 40, Intercourse, PA 17534. Enjoy our unique village inn. Walk to quilt, craft and antique shops. Visit our restaurant for PA Dutch home cooking. Amish farmland tours, discount tickets, free healthy breakfast, AAA ♦♦♦♦ Rating, AC, Cable/TV. 800-717-6202 or 717-768-3636.
www.amishcountryinns.com

Best Western Revere Inn and Suites U11

3063 Lincoln Hwy. East (US Rt. 30), Paradise, PA 17562. Heart of Amish Country. 95 rooms and suites all with refrigerator. Heated indoor/outdoor pools and whirlpool. High-speed internet, fitness room, game room, gift shop, guest laundry. Restaurant and lounge built in 1740. Near outlets and theatres. Free deluxe continental breakfast buffet. Kids under 18 free. AAA♦♦♦♦. 717-687-7683 or 800-429-7383. www.reverein.com

Bird-in-Hand Family Inn & Restaurant S9

2740 Old Philadelphia Pike (Route 340), Bird-in-Hand, PA 17505. 800-864-7816. www.stayatthecenter.com
See ad, this page.

Bird-in-Hand Village Inn & Suites S9

2695 Old Philadelphia Pike (Route 340), Bird-in-Hand, PA 17505. 24 uniquely decorated rooms and suites in four historic buildings. Complimentary breakfast, evening snacks and farmland tour. Located in charming Bird-in-Hand. Walking distance to shops. AAA ♦♦♦♦. 800-914-2473. www.stayatthecenter.com
See ad, this page.

The Black Horse Lodge and Suites X2

PA Route 272, Exit 286, PA Turnpike, Denver, PA 17517. Adamstown Antique mile. Free continental breakfast buffet, in-room coffee, refrigerators, some microwaves, hair dryer, iron and board, CATV, swimming pool, playground, picnic pavilion, restaurant and tavern. Golf packages, family reunions, free wireless internet, Mobil ★★ AAA♦♦♦♦. 717-336-7563 or 800-610-3805. www.blackhorselodge.com.

Carriage House Motor Inn S13

Routes 896 and 741, 144 East Main Street, Strasburg, PA 17579. In the Historic Village of Strasburg. Nice, clean, comfortable first-floor rooms, AC, CCTV, playground. Amish Country tours, Strasburg Rail Road, Choo Choo Barn 3 blocks. Outlets 3 miles.
www.amishcountryinns.com 717-687-7651.

125 Rooms • Complimentary 2-Hour Farmland Tour • 15 Acres of Amenities Restaurant • Bakery • Mini Golf

Bird-in-Hand Family Inn
Route 340, Bird-in-Hand, PA
www.bird-in-hand.com
1-866-729-1600
Reservations also accepted for Amish Country Motel, Travelers Rest Motel, Bird-in-Hand Village Inn & Suites, Mill Stream Country Inn
On Route 340, A Cultural Scenic Byway

CHERRY LANE MOTOR INN S10



84 North Ronks Road, Ronks, PA 17572. Near outlets, attractions, and restaurants. Between Routes 340 and 30 in quiet Amish-farm area. CATV, phones, outdoor pool, play/picnic area, game room, farm animals, laundry, large family rooms. 717-687-7646. www.cherrylanemotorinn.com ☑

Classic Inn Q10

2302 Lincoln Highway East, Lancaster, PA 17602. 717-291-4576 or 888-395-3262. www.classicinnpa.com ☑

Need assistance with your travel planning and lodging?
Call 1-800-PADUTCH
OR VISIT US ONLINE AT
WWW.PADUTCHCOUNTRY.COM

Comfort Inn of New Holland W6

626 West Main Street, New Holland, PA 17557. Newly renovated Gold award winner surrounded by Amish farmland and minutes from area attractions. Variety of room types, some with whirlpool tubs. Included free are deluxe continental breakfast, local calls, fitness room, high-speed internet access. Packages with discount tickets to area attractions. 800-296-4661. www.comfortinnnewholland.com ☑

Comfort Inn—Sherwood Knoll E8

500 Centerville Road, Lancaster, PA 17601. 717-898-2431 or 1-800-223-8963. www.comfortlancaster.com See ad, this page. ☑ ✕

Conewago Valley Motor Inn B3

1688 Hershey Road (Route 743 North of Route 283), Elizabethtown, PA 17022. 717-367-4320. 866-246-1805. www.hersheyconewago.com ☑

Continental Inn Q10

2285 Lincoln Highway East, Lancaster, PA 17602. 165 rooms and suites, free hot breakfast for 2, indoor and outdoor pools, kiddie pools, whirlpool and sauna, restaurant and lounge, game room, playground, discount amusement and tour tickets, getaway packages. Next to Dutch Wonderland. 717-299-0421. www.continentalinn.com ☑ ✕

Country Inn and Suites by Carlson® Lancaster Q10

2260 Lincoln Highway East (Route 30), Lancaster, PA 17602. 717-299-4460. 800-456-4000. www.countryinns.com/lancasterpa See ad, this page. ☑

Country Inn and Suites by Carlson® Manheim/Lancaster G5

1475 Lancaster Road (Route 72), Manheim, PA 17545. 717-665-5440 or 877-720-1202. www.countryinns.com/manheimpa ☑

Country Inn of Lancaster P9

2133 Lincoln Highway East, Lancaster, PA 17602. 717-393-3413. 877-393-3413. www.countryinnoflancaster.com See ad, page 40. ☑ ✕

Country Living Inn Q9

2406 Old Philadelphia Pike (Route 340), Lancaster, PA 17602. Our family welcomes you to our clean, charming, quaint and secure country inn with quilt covered beds. Nonsmoking, FREE COFFEE/MUFFINS, local calls, wireless high-speed internet. Working Amish farms, quilt shop across the street. Convenient location. 717-295-7295. www.countrylivinginn.com ☑

Countryside Motel R11

134 Hartman Bridge Road, Route 896, Ronks, PA 17572. 717-687-8431. ☑

Discover Lancaster County & So Much More...

Our great location just off US Route 30 at the Centerville Exit puts you close to a variety of Lancaster County attractions, shopping outlets and businesses, making side trips to Hershey, Harrisburg and Gettysburg an easy option.

Amenities include: Free internet, restaurant & cocktail lounge with live weekend entertainment, banquet & meeting facilities, outdoor pool & kiddie pool, a new fitness facility and free deluxe continental breakfast.

COMFORT INN SHERWOOD KNOLL
500 Centerville Road • Lancaster, PA 17601
717-898-2431 • 800-223-8963

Make a splash in Dutch Country!

Just Across from Dutch Wonderland

- Totally smoke-free rooms
- Family, Jacuzzi & King Suites
- Deluxe Continental Breakfast
- Indoor pool, whirlpool & fitness room
- Free High-Speed Internet

AAA

800-456-4000
2260 Lincoln Hwy. (Rte. 30)
Lancaster, PA • (717) 299-4460
www.countryinns.com/lancasterpa

COUNTRY INN & SUITES
BY CARLSON

A cozy stay at a comfortable price®

COURTYARD BY MARRIOTT LANCASTER N8



1931 Hospitality Drive, Lancaster, PA 17601.
Showcasing the beautiful new courtyard hotel design with breakfast buffet, indoor pool, whirlpool, exercise room, lounge, plus the services and room amenities you need. Great central location near the Visitor's Bureau, several restaurants and walking trails nearby. 717-393-3600. 800-321-2211. www.Marriott.com/LNSGF

Days Inn East R10

34 Eastbrook Road, Route 896 North, Ronks, PA 17572. 717-390-1800 or 1-800-DAYS-INN. www.daysinn.com

Days Inn Lancaster K8

30 Keller Avenue, Lancaster, PA 17601. 717-299-5700. 800-257-3297. www.daysinnlancaster.com

Dutch Treat Motel S12

265 Herr Road, Ronks, PA 17572. 1-800-687-0214. www.dutchtreatmotel.com

Eastbrook Inn R10

21 Eastbrook Road, Ronks, PA 17572. 717-393-2550 or 800-777-8338.

Econo Lodge North P9

2165 U.S. Highway 30 East, Lancaster, PA 17602. AC, CTV, free coffee and tea. Queen beds and Amish-farm view. Refrigerators. Non-smoking rooms available. Access to pool. AAA and senior discount. Kids free. Dutch Wonderland 3/4 miles. 717-299-6900 or 800-55-ECONO.

Econo Lodge South P9

2140 U.S. Highway 30 East, Lancaster, PA 17602. 717-397-1900. 800-55-ECONO.

Fairfield Inn by Marriott Lancaster H6

150 Granite Run Dr., (off Rt. 72N), Lancaster, PA 17601. Free deluxe continental breakfast, local phone calls and movie channel. In-room coffee maker, hairdryer, iron & ironing board. Rooms have 1 king or 2 double beds. Executive rooms have a sofa bed, microwave & refrigerator. Interior corridors, electronic door locks. Outdoor pool and spa (seasonal), exercise room, guest laundry. 717-581-1800 or 888-STAY-FFI. www.marriott.com/LNSFI

Flory's Cottages & Camping S10

99 North Ronks Road, P.O. Box 308, Ronks, PA 17572. "Where the Amish are our neighbors." Clean, modern, non-smoking, pet-free. Private 2nd floor rooms with bath—cable TV. Fully equipped 1, 2 and 3 bedroom cottages. Camp store and laundry. Year round; central location. 717-687-6670. MC, V. www.floryscamping.com

FULTON STEAMBOAT INN R10



Rts. 30 & 896, Lancaster, PA 17602. Adj. to Amish farms. Nearby to theaters, Dutch Wonderland, 200 outlet stores and other exciting PA Dutch attractions. Restaurant, gift shops, indoor pool, spa, fitness center, video game room, and unique outdoor playground. Each room is non-smoking and features refrig., microwave, hairdryer, coffeemaker. All rooms unique. 717-299-9999 or 800-922-2229. www.fultonsteamboatinn.com See ad, this page.

"In the Heart of Pennsylvania Dutch Country"

- AAA & Senior Discounts
- 2 Queen Beds in Each Room
- Free Continental Breakfast
- Kids Stay FREE
- Cable TV w/ HBO
- Restaurant / Lounge
- Heated Indoor Pool / Outdoor Pool
- Hot Tub

COUNTRY INN of LANCASTER

For Reservations call **1-877-393-3413**

2133 Lincoln Hwy. East (Rt. 30, Lancaster)

Bring Out *The Country Inn* You. www.countryinnoflancaster.com

AAA Rating

ALL ROOMS NON-SMOKING!

All Rooms Feature:

- Microwave
- Refrigerator
- Coffeemaker
- Hairdryer
- Iron

Kings, Queens and Bunk Beds for Kids. Indoor Pool/Jacuzzi, Restaurant, Cocktail Lounge, Exercise & Game Room, Unique Playground & Two Gift Shops.

For Reservations Call:
717-299-9999 or 1-800-922-2229

**Rte. 30 & 896
Lancaster County, PA
Reserve Online at
www.fultonsteamboatinn.com**

Garden Spot Motel Q10

2291 US Route 30 East, Lancaster, PA 17602. AAA/ Mobil approved. Coffee shop, CCTV, phones, gift shop, hairdryers, irons. All first floor with outdoor seating, complimentary p.m. coffee and tea. Walk to Dutch Wonderland, Lancaster Host Resort, American Music Theatre, outlets, restaurants, golf, mini-golf and comedy club. Three miles to Sight & Sound.® Family operated. 717-394-4736. www.gardenspotmotel.com

HAMPTON INN—LANCASTER N8



Rt. 30 at Greenfield Rd., 1/16 mile from Visitors Center. "On the house" hot breakfast, complimentary wireless internet access. All guest rooms with microwave & refrigerator. Lodgenet with HBO & Pay-per-view in-room movies. Outdoor heated pool & fitness room. Hilton Honors points & miles. Attractions nearby. 100% Hampton Guarantee. 717-299-1200 or 800-HAMPTON. www.hampton-inn.com/hi/lanaster

HAMPTON INN & SUITES — EPHRATA AT MOUNTAIN SPRINGS S4



380 East Main Street, Ephrata, PA 17522. One of Lancaster County's newest hotel. 72 guest rooms and studio suites, indoor pool, on-the-house hot breakfast, fitness room, board room, high-speed internet access. Walk to charming downtown Ephrata. Close to Amish country sites, antique shops, Doneckers, Ephrata Cloister. I-76, Exit 286. 717-733-0661. www.ephratahampton.com

Need assistance with your travel planning and lodging?
Call 1-800-PADUTCH
OR VISIT US ONLINE AT
WWW.PADUTCHCOUNTRY.COM

HAMPTON INN MANHEIM (LANCASTER COUNTY) E3



2764 Lebanon Road, Manheim, PA 17545. Award-winning hotel for quality and service! Located directly across the street from the PA Renaissance Faire. Free "On the house" breakfast featuring hot item daily. Free high-speed internet access. Seasonal outdoor heated pool. HERSHEY PARK, PA Renaissance Faire, Golf and Romance Packages available. 717-665-6600. 800-HAMPTON. www.hamptoninn.com

HARVEST DRIVE FAMILY INN U9



3370 Harvest Drive, P.O. Box 500, Intercourse, PA 17534. Ultra quiet and relaxing location amongst Amish farms — breathtaking farm views. Near downtown Intercourse, minutes from area attractions. FREE continental breakfast and access to pool, rooms up to 3 beds, restaurant on premises. For your ultimate vacation experience. 717-768-7186 or 800-233-0176. www.harvestdrive.com

HAWTHORN INN & SUITES, LANCASTER P9



Take Rt. 30 to the Lincoln Highway (Rt. 462) exit! Our Studio Suite accommodations with kitchenette efficiencies, exercise room, and laundry facilities are close to all of Lancaster's attractions. We offer free local calling, free Movie Channel, free hot breakfast, and a senior discount! 1-800-794-0735. 717-290-7100. www.hawthorn.com

HERSHEY FARM RESTAURANT & INN R11



Just past Rockvale Outlets, Route 896, Strasburg. 57 rooms with an outdoor pool and easy walking access and private drive to Sight & Sound.® The dining selections are endless, the night's stay is cozy, and the shopping is plentiful! 717-687-8635 or 800-748-8042. www.hersheyfarm.com See ad, page 34.

HILTON GARDEN INN LANCASTER J6



101 Granite Run Drive, Lancaster, PA 17601. Microwaves and refrigerators in the fashionably redecorated elegant rooms. Located in a prestigious corporate park. Indoor pool, whirlpool, fitness room, restaurant and lobby bar. Convenient to Hershey, Amish Country attractions and outlet shopping. 1-800-HILTONS, 717-560-0880. www.lancaster.gardeninn.com

Holiday Inn Express Elizabethtown (Hershey Area) B5

147 Merts Drive, Elizabethtown, PA 17022. Closest Lancaster County hotel to Hersheypark. Quality excellence award winner offers variety of room types, including triple queen rooms and whirlpool suites. Included free are fresh breakfast bar, local calls, fitness room and high-speed internet access. Discount tickets to area attractions. 800-335-4188. www.hiexpress.com/elizabethtnpa

Holiday Inn Express Hotel & Suites, Lancaster/Lititz K5

101 Cross Winds Drive, Lititz, PA 17543. Newly built in 2005! Free deluxe continental breakfast with cinnamon rolls and waffles. Indoor pool and spa, fitness and business centers. Free wired and wireless high-speed internet access. Close to all major attractions. 717-625-2366. www.hiexpress.com/lititz

HOLIDAY INN EXPRESS LANCASTER— ROCKVALE OUTLETS R10



24 South Willowdale Drive, Lancaster, PA 17602. Free express start breakfast, free high-speed internet access, outdoor pool (seasonal), fitness center, rooms with either 2 queen or 1 king bed, refrigerator, microwave, interior corridors, electronic locks. 717-293-9500 or 800-524-3817. www.hiexpress.com/lancasterpa 🏠

Holiday Inn Visitors Center N8

521 Greenfield Road, Lancaster, PA 17601. Best business and leisure location in Lancaster! Adjacent to Visitors Center and Greenfield Corporate Park. Within minutes of outlets and attractions, indoor and outdoor pools, restaurant/lounge, fitness center and business center for Priority Club guests. 717-299-2551. www.ichotelsgroup.com 🏠 ✕

LANCASTER ARTS HOTEL

The perfect mix of style, comfort,
and aesthetics.

Unique luxury accommodations showcase
original artwork and furnishings.

Central location in Lancaster city's
stadium district

19th century warehouse listed in
The National Register of Historic Places

63 uniquely decorated rooms and suites

Indoor/outdoor restaurant, lounge,
and room service

Fitness center

Indoor parking

Summer 2006 opening

www.LancasterArtsHotel.com

300 Harrisburg Avenue • Lancaster, PA 17603
1-866-720-2787



HOTEL BRUNSWICK K9



151 North Queen Street, Lancaster, PA 17603.

Located in historic downtown Lancaster. Restaurant, lobby lounge, indoor pool and fitness room. Covered parking. 221 guestrooms with free high-speed wireless internet. Shopping and attractions nearby. 800-821-9258. 717-397-4800. www.hotelbrunswick.com 🏠 ✕ 🐾

HOWARD JOHNSON INN — GOLD MEDAL AWARDED P9



2100 U.S. Highway 30 East, Lancaster, PA 17602.

New deluxe continental breakfast, kids stay free, indoor heated pool and new game room. Free HBO and Disney. New Quiznos sub and Dominos Pizza on site. 100% nonsmoking hotel with interior corridor. 717-397-7781 or 800-446-4656. www.hojo.com 🏠 ✕

Lancaster Arts Hotel K8

300 Harrisburg Avenue, Lancaster, PA 17603. 717-299-3000. www.LancasterArtsHotel.com See ad, this page. 🏠

Lancaster County Reservation Center

800-PA-DUTCH (800-723-8824).
www.padutchlodging.com See ad, page 27.

Need assistance with your
travel planning and lodging?
Call 1-800-PADUTCH

OR VISIT US ONLINE AT
www.PADUTCHCOUNTRY.COM

LANCASTER HOST GOLF RESORT & CONFERENCE CENTER Q10



2300 Lincoln Highway East, Lancaster, PA 17602. The only resort in the heart of it all! Resort offers huge outdoor pool with poolside grill, indoor pool, 18 holes championship golf, mini-golf, tennis, basketball, volleyball, 2-mile walking/biking path (with bike rental) nestled on 220 lovely acres with restaurants and lounge. 1/4 mile from many attractions. 800-233-0121 or 717-299-5500. www.lancasterhost.com See ad, page 43. 🏠 ✕ 🐾

Lancaster Motel S10

2628 Lincoln Highway East, Ronks, PA 17572.
717-687-6241 🏠

Leola Village Inn and Suites R6

38 Deborah Drive, Leola, PA 17540. 4-diamond luxury Inn located in historic Leola Village. Shop, dine and sleep in one of our 57 oversized guest rooms decorated with antique reproduction furniture. European continental breakfast included. Dine at award-winning Mazzi. A member of Historic Hotels of America and located in the heart of Amish Country. 717-656-7002. 877-669-5094. www.leolavillage.com 🏠 ✕

MainStay Suites by Choice Hotels—Lancaster E8

314 Primrose Road, Mountville, PA 17554. Route 30 at Mountville exit. All-suite, extended stay hotel. Studio, 1 and 2 bedroom suites. Full kitchens with accessories. Whirlpool suites. Free continental breakfast. 717-285-2500. 1-800-4-CHOICE. Wireless HSIA. www.mainstaysuites.net 🏠 🐾

Mill Stream Country Inn R9

170 Eastbrook Road (Route 896), Smoketown, PA. The clean rooms and warm hospitality you expect from Bird-in-Hand Family of Inns. Complimentary 2-hour farmland tour, outdoor pool, deluxe continental breakfast. Access to all amenities at Bird-in-Hand Family Inn. 800-355-1143. www.stayatthecenter.com See ad, page 38. 🏠 ✕

Motel 6 T10

2959 Lincoln Highway East, Gordonville, PA 17529.
717-687-3880 or 800-466-8356. 🏠 🐾

NETHERLANDS INN & SPA S12



One Historic Drive, Strasburg, PA 17579. 102 rooms situated on an estate-like setting, minutes from all of Lancaster County's major attractions. Guests enjoy a free full breakfast, casual, contemporary dining at The Bistro, rejuvenate at spa orange, our full-service day spa, relax by our outdoor pool or socialize in our billiard room. 800-872-0201. www.netherlandsinn.com See ad, this page. ☰ ✂ 🐾

Olde Amish Inn R10

Route 896, 33 Eastbrook Road, Ronks, PA 17572. Family-operated motel centrally located to all Lancaster attractions. Close to outlets, restaurants and Amish farms. Queen beds, free coffee and pastries, non-smoking rooms. AAA, AX, V, MC, D. 717-393-3100. www.oldeamishinn.com ☰

Orchard Inn T9

44 South Harvest Road, Bird-in-Hand, PA 17505. 717-768-3644. ☰

Paradise Motor Lodge V11

3320 Lincoln Highway East, Route 30, Paradise, PA 17562. 717-768-3745. ☰ 🐾

Parkside Motel J7

1320 Harrisburg Pike, Lancaster, PA 17603. 717-397-4911. www.parksidemotelpa.com ☰ 🐾

Quality Inn & Suites M6

2363 Oregon Pike, Lancaster, PA 17601. 2 miles north of Route 30 on Route 272. Quiet, rural setting. Free continental breakfast. In-room coffee. Shenanigans Restaurant & Lounge. Suites include 25" TV/VCR, micro/fridge and sofa. Outdoor pool. Close to attractions, outlets and theaters. 717-569-0477. 800-892-9875. www.choicehotels.com/hotel/pa429 ☰ ✂

Quiet Haven Motel R9

2556 Siegrist Road, Ronks, PA 17572. 717-397-6231. ☰

Red Caboose Motel and Restaurant T12

312 Paradise Lane, Ronks, PA 17572. Under new ownership! Stay overnight in an authentic caboose and eat in a dining car. Petting zoo, buggy rides, playground, picnic area and outdoor swimming pool on premise. Fun for all ages. 717-687-5000 or 888-687-5005. www.redcaboosemotel.com ☰ ✂

Red Carpet Inn T10

2884 Lincoln Highway East, P.O. Box 5, Ronks, PA 17572. 717-687-8020 or 800-251-1962. ☰

*The Resort In
The Heart Of It All!*

LANCASTER HOST
RESORT & CONFERENCE CENTER

Call For Great Family Vacation Packages!

- 330 spacious guestrooms
- 18 hole championship golf course
- Large heated outdoor and indoor pools
- Whirlpool, fitness room, tennis courts
- 200 factory outlet stores and family attractions nearby
- On-site restaurants and lounge
- Across from Dutch Wonderland Amusement Park
- 35 Minutes from Hershey Park

2300 Lincoln Hwy. East Lancaster, PA 17602
1-800-233-0121 • www.lancasterhost.com

LESS THAN ONE MILE FROM SIGHT AND SOUND® MILLENNIUM THEATER® AND STRASBURG RAIL ROAD, IN THE HEART OF PENNSYLVANIA DUTCH COUNTRY ON ROUTE 896.

Special Seasonal Value Packages

PA Dutch Country 2006 FlavorFEST
Official partner of PA Dutch Country FlavorFest™

NETHERLANDS INN & SPA
A beautiful country inn situated on 18 acres in the heart of Amish farm country.

Get away from ordinary places to stay. Netherlands Inn & Spa has so much more to offer. Ride bikes along brick paths. Enjoy a complimentary full hot breakfast each day of your stay. Play in the outdoor pool. Relax on 18 acres of peace and quiet in the middle of Pennsylvania Dutch country. Don't just find someplace to stay—stay someplace that's a real find. For reservations, call (800) 872-0201. For more information, visit www.netherlandsinn.com.



**FOR RESERVATIONS:
Call 800 872 0201**

**OR VISIT US AT:
www.netherlandsinn.com**

Full service day spa

FACIAL THERAPIES
MASSAGES
MANICURES/PEDICURES
BODY/SKIN REJUVENATING THERAPIES
AND MORE

Hot breakfast included with room

DINING AT THE BISTRO
BILLIARD ROOM WITH DARTS, GAME TABLES, FLAT-SCREEN TVs

Kids under 10 stay free!

OUTDOOR SWIMMING POOL
PLAYGROUND
BIKE RENTALS



**NETHERLANDS
INN & SPA**

One Historic Drive, Strasburg, PA 17579

Red Carpet Inn & Suites E2

16 Marsenna Lane, Jonestown, PA 17038. 717-865-6600 or 800-251-1962. 🏠🐾

Red Roof Inn of Lancaster Q10

2307 Lincoln Highway East (Route 30), Lancaster, PA 17602. 1/4 mile east of Dutch Wonderland. Close to attractions and outlets. All rooms with refrigerators. Continental breakfast. Outdoor pool. Three adjacent restaurants. Kids always free with adult. MC, V, AX, DC. 717-299-9700. www.redroof.com 🏠🐾

Scottish Inns S10

2641 Lincoln Highway East, Ronks, PA 17572. 717-687-0925. 🏠

Sleep Inn & Suites by Choice Hotels T10

2869 Lincoln Highway East (Route 30), Ronks, PA 17572. New Motel just two minutes from Sight and Sound® Theaters, outlet malls and attractions. Microwave, refrigerator in each room. Indoor pool and fitness room. Complimentary continental breakfast served daily. 717-687-5226. www.choicehotels.com 🏠

Sleep Inn & Suites by

Choice Hotels—Lancaster E8

310 Primrose Lane, Mountville, PA 17554. Route 30 at Mountville Exit. 72 rooms and 8 suites. Free continental breakfast, local calls, wireless HSPA & HBO. Indoor pool, whirlpool, exercise room and pay-per-view movies. Next to Boulders mini golf. 717-285-0444. 800-4-choice. www.sleepinn.net/lanc 🏠

Smoketown Motor Lodge R9

190 Eastbrook Road (Route 896), Smoketown, PA 17576. 717-397-6944. www.smoketownmotorlodge.com 🏠

Soudersburg Motel T10

2850 Lincoln Highway East, Ronks, PA 17572. 717-687-7607. www.soudersburgmotel.com 🏠

SpringHill Suites by Marriott Hershey DD1

115 Museum Drive, Hershey, PA 17033. 717-583-2222. www.springhillsuiteshershey.com 🏠

Spruce Lane Lodge & Cottages Q9

2439 Old Philadelphia Pike (Route 340) Lancaster, PA 17602. Located 1 mile west of Bird-in-Hand in the heart of Amish country. Family owned and operated. Enjoy our old-fashioned country lodge or our deluxe new cottages with cathedral ceilings. All non-smoking. 800-446-4901. www.sprucelanelodge.com 🏠

Sunset Valley Motel P6

2288 New Holland Pike (Route 23), Lancaster, PA 17601. 717-656-2091. www.sunsetvalleymotel.com 🏠

The Suites at Eden Resort Inn L7

Route 30 at Oregon Pike exit, Lancaster. 717-569-6444. 888-477-7754. www.edenresort.com See ad, inside front cover. 🏠✕

Travelers Rest Motel W9

3701 Old Philadelphia Pike (Route 340), Intercourse, PA 17534. 800-626-2021. www.stayatthecenter.com See ad, page 38. 🏠

Travelodge H9

2101 Columbia Avenue, Lancaster, PA 17603. Great rates, six miles from Amish country. Rooms clean and comfortable, continental breakfast, coffee maker, hair dryer in room. Restaurant on property. Outdoor pool (seasonal) gives a cool feeling during hot summers. Free wireless internet. 717-397-4201 🏠🐾

Travelodge Conference Center K7

1492 Lititz Pike, Lancaster, PA 17601. 717-293-8400. www.lancastertravelodge.com 🏠✕

Weathervane Motor Court R10

15 Eastbrook Road, Ronks, PA 17572. 717-397-3398 or 866-540-7700. 🏠

WILLOW VALLEY RESORT AND CONFERENCE CENTER L12



2416 Willow Street Pike, Lancaster, PA 17602. Three miles south of Lancaster on Route 222. Scenic country setting, 342 beautiful rooms & suites, homestyle smorgasbords, 3 pools, public and private golf courses, indoor water playground, free bus tour, bakery, gift shops, fitness center, spa services, family activities, corn maze and more. Kids stay free packages. Come help us celebrate our 40th anniversary. 888-251-4379. www.willowvalley.com See ad, inside back cover. 🏠✕🐾🏠

Zook's Motel S6

103 East Main Street, Leola, PA 17540. 717-656-3313. 🏠

HOW TO LOCATE PROPERTIES ON THE MAP

- 🏠 Information Centers
- ✕ Attractions, Sightseeing/Tours
- 🏪 Shops, Markets, and Outlets
- 🏠 Lodging
- 🏡 Retirement Communities
- 🚗 Transportation
- ★ Lancaster County Heritage
- 🐾 Pet Friendly
- 🚗 Transportation Services
- 🚰 Service Stations/Car Wash
- ▲ Campgrounds
- ✕ Restaurants
- 🏠 Hospitals
- 📖 Libraries
- Educational Facilities
- 💰 Banks
- 🏠 Golf
- 🏠 Bus Information Center
- ✕ Airports
- 🚗 Train Stations

Handicap Facilities —

We suggest you contact the businesses you are planning to visit to be sure they can accommodate your individual needs.

MC—Master Card, V—Visa, D—Discover, AX—American Express, DC—Diner's Club, CB—Carte Blanche, PC—Personal Checks, MAC—Debit Card, AC—Air Conditioning, DR—Dining Room, CTV—Color TV, CCTV—Color Cable TV, B—Bar, C—Cribs, P—Pets, EWS—Electric, Water, Sewer

A1—Z19 Refers to map location

BED & BREAKFASTS AND COUNTRY INNS



EXCELLENT ACCOMMODATIONS, MOST OFFERING FULL OR CONTINENTAL BREAKFASTS.

1766 Osceola Mill House Bed & Breakfast W10

313 Osceola Mill Road, Gordonville, PA 17529. 717-768-3758. 800-878-7719. www.lancaster-inn.com 🏠★

1786 The Limestone Inn S13

33 East Main Street, Strasburg, PA 17579. 717-687-8392 or 800-278-8392. www.thelimestoneinn.com 🏠★

Across the Way Bed & Breakfast at the Fassitt Mansion Z9

6051 Old Philadelphia Pike, Gap, PA 17527-9798. 717-442-0453. 1-888-X-THE-WAY. www.acrossthewaybb.com 🏠

Adamstown Inn X2

62 West Main Street, Adamstown, PA 19501-0938. 717-484-0800. 800-594-4808. www.adamstown.com 🏠

After Eight Bed & Breakfast T11

2942 Lincoln Highway East, Paradise, PA 17562. 717-687-3664. 888-314-3664. www.aftereightbnb.com 🏠

Alden House Bed & Breakfast L5

62 East Main Street, Lititz, PA 17543. 717-627-3363 or 800-584-0753. www.aldenhouse.com 🏠

Apple Bin Inn M13

2835 Willow Street Pike, Willow Street, PA 17584. 800-338-4296. 717-464-5881. www.AppleBinInn.com 🏠

The Artist's Inn & Gallery X4

117 East Main Street, Terre Hill, PA 17581. Make your getaway picture perfect—spend the night in an art gallery. Enjoy gourmet breakfasts, Jacuzzis, fireplaces, cable TV DVD/CD wireless internet access and innkeeper's artwork. Amish buggies pass right by the Inn. 717-445-0219. 888-999-4479. www.artistinn.com 🏠🐾

Australian Walkabout Inn N12

837 Village Road, Lampeter, PA 17537. Anniversary and Honeymoon suites and cottage. Private baths, Jacuzzis,® hot tubs, fireplaces, A/C, CTV, and VCR. Candlelit full breakfast, vine-covered porches, and lush gardens. Amish visits arranged. Romantic 2-night packages! AAA ♦♦♦. 717-464-0707. www.walkaboutinn.com 🏠

Authentic Bed & Breakfasts of Lancaster County (Association)

800-552-2632. www.authenticbandb.com 🏠

Beiler's Bed & Breakfast Suites & Efficiencies U11

3153 Lincoln Highway East, Paradise, PA 17562. 800-915-3994. www.beilersbnb.com 🏠

B.F. Hiestand House Bed & Breakfast C8

722 East Market Street, Marietta, PA 17547. 877-560-8415 or 717-426-8415. www.bfh.com 🏠

Black Walnut Leigh Bed & Breakfast T14

325 Stony Hill Road, Quarryville, PA 17566.
717-786-8695. www.black-walnut.com 🏠

Blue Rock Bed & Breakfast Inn H11

72 Blue Rock Road, Lancaster (Millersville), PA 17551.
717-872-7440. www.bluerockbnb.com 🏠

Cameron Estate Inn & Restaurant B6

1855 Mansion Lane, Mount Joy, PA 17552. 717-492-0111.
888-422-6376. www.cameronestateinn.com 🏠 ✕

Candlelight Inn Bed & Breakfast S10

2574 Lincoln Highway East, Ronks, PA 17572. Elegantly appointed inn in desirable location, surrounded by Amish farmland. Beautiful Victorian antiques, fireplaces, Jacuzzis®, gourmet candlelit breakfast, romantic getaway packages. Come be pampered! AAA ♦♦♦♦. 717-299-6005. 800-77CANDLE. www.candleinn.com 🏠

Carriage Corner Bed & Breakfast W9

3705 East Newport Road, Intercourse, PA 17534.
717-768-3059 or 800-209-3059.
www.carriagecornerbandb.com 🏠

Churchtown Inn Bed & Breakfast Z5

2100 Main Street (Route 23), Churchtown, PA 17555.
717-445-7794. 800-637-4446. www.churchtowninn.com 🏠 ☆

Cocalico Creek Bed & Breakfast T2

224 South Fourth Street, Denver, PA 17517.
717-336-0271. 888-208-7334. www.cocalicochrk.com 🏠

The Columbian, A Bed & Breakfast Inn D9

360 Chestnut Street, Columbia, PA 17512. 717-684-5869. 800-422-5869. www.columbianinn.com 🏠 ☆

Conewago Manor Inn A4

2048 Zeager Road, Elizabethtown, PA 17022. Historic 1739 stone manor turned B&B on 20 acres along creek. 9 guest rooms with fireplaces and private whirlpool baths, most with private balconies, weddings, receptions, conferences, special getaways. Victorian antiques, gift shop. Full breakfast. 717-361-0826. www.conewagomanorinn.com 🏠

Cornwall Inn E2

50 Burd Coleman Road, P.O. Box 689, Cornwall, PA 17016. 717-306-6178. 888-313-3969.
www.cornwallinnpa.com 🏠

Country Patches Bed & Breakfast U11

3157 Lincoln Highway East, Paradise, PA 17562.
717-687-5698. www.countrypatchesbnb.com 🏠

Creekside Inn Bed & Breakfast U10

44 Leacock Road, Paradise, PA 17562. 717-687-0333 or 866-604-2574. www.thecreeksideinn.com 🏠 ☆

Dilworth Rocking Horse Bed & Breakfast W6

285 West Main Street, New Holland, PA 17557. 717-354-8674. 800-208-9156. www.rockinghorsebb.com 🏠

Doneckers Inns T4

318-324 North State Street, Ephrata, PA 17522. 717-738-9502. 800-377-2206. www.doneckers.com
See ad, page 17. 🏠 🍷 ✕ ☆

Dutch Pride Guest House Bed & Breakfast E4

53 North Penn St., Manheim, PA 17545. 717-665-5083.
877-665-5083. www.bbonline.com/pa/dutchpride 🏠

E.J. Bowman House Bed & Breakfast K6

2672 Lititz Pike (Route 501), Lancaster, PA 17601.
717-519-0808. 877-519-1776. www.ejb Bowmanhouse.com 🏠

Ellmaker House Bed & Breakfast Y12

5380 Lincoln Highway East, Gap, PA 17572.
717-442-1142. www.ellmakerhouse.com 🏠

Flowers & Thyme Bed and Breakfast P10

238 Strasburg Pike, Lancaster, PA 17602.
717-393-1460. www.flowersandthyme.com 🏠

Forgotten Seasons Bed & Breakfast L4

304 East Newport Road, Lititz, PA 17543. 717-626-3088. 877-476-4589. www.forgottenseasons.com 🏠

Frogtown Acres Bed & Breakfast W11

44 Frogtown Road, Paradise, PA 17562. 717-768-7684 or 888-649-2333. www.frogtownacres.com 🏠

Furnace Hills Bed & Breakfast Q2

575 Mountain Top Drive, Denver, PA 17517. 717-733-3897. 877-477-3557. www.furnacehills.com 🏠

Gabriel's Hill Bed & Breakfast Z15

432 Noble Road, Christiana, PA 17509.
610-593-7308. www.gabrielshill.com 🏠

General Sutter Inn K4

14 East Main Street, Lititz, PA 17543.
717-626-2115. www.generalsutterinn.com 🏠 🍷

Greystone Manor Victorian Inn R9

2658 Old Philadelphia Pike, Bird-in-Hand, PA 17505.
1845 Historic Inn perched atop a hill on two acres, surrounded by Amish working farms. Rooms have TV, AC, private baths and full breakfast included. View our award winning gardens, patios, pool and hot tub. 717-393-4233. www.greystonemanor.com 🏠 ☆ 🍷

Harvest Moon Bed & Breakfast X6

311 East Main Street, New Holland, PA 17557. 717-354-0213 or 888-824-3763. www.harvestmoonbandb.com 🏠

The Hertzog Homestead Bed & Breakfast R5

470 West Metzler Road, Ephrata, PA 17522.
717-859-4996. www.hertzoghomestead.com 🏠

Hollinger House Bed & Breakfast L12

2336 Hollinger Road, Lancaster, PA 17602.
717-464-3050. www.hollingerhousebnb.com 🏠 🍷

Homestead Lodging R9

184 Eastbrook Road, Route 896, Smoketown, PA 17576. 717-393-6927. www.homesteadlodging.net 🏠

Inn at Folk Craft Center Q8

441 Mt. Sidney Road, Witmer, PA 17585. 717-397-3676.
866-397-3676. www.folkcraftcenter.com 🏠

INN & SPA AT INTERCOURSE VILLAGE V9



Route 340, Main Street, P.O. Box 598, Intercourse, PA 17534. AAA ♦♦♦♦ Award. 1909 Romantic Victorian/Country Inn & Spa for couples. Fireplaces, Jacuzzi, private bath, TV, VCR, refrigerator, phone. Candlelit gourmet breakfast. Walk to over 50 shoppes, (quilt, craft and antique). Honeymoon/Anniversary Suites, Spa packages. 800-664-0949 or 717-768-2626.
www.amishcountryinns.com 🏠 ☆

The Inn at Kitchen Kettle Village V9

Route 340, Intercourse, PA. Spend the day in our Village shopping and then sleep over under a handmade quilt. We offer two suites and nine fully appointed guest quarters tucked within our Village, plus free breakfast. Call for reservations: 800-732-3538. www.kitchenkettle.com See ad, page 19. 🏠 🍷 ✕ ☆

The Inn at Twin Linden Z5

2092 Main Street, Churchtown, PA 17555.
717-445-7619. www.innattwinlinden.com 🏠

Jacob Keller House Q4

990 Rettew Mill Road, Ephrata, PA 17522.
717-733-4954. 🏠

Kimmell House Bed & Breakfast R4

851 South State Street, Ephrata, PA 17522. 717-738-3555. 800-861-3385. www.kimmellhouse.com 🏠

King's Cottage, A Bed & Breakfast L9

1049 East King Street, Lancaster, PA 17602. Celebrate at a "Top 10 Most Romantic Inn." Luxurious elegance with warm hospitality. King/queen beds, private baths, whirlpools, fireplaces, gourmet breakfast, wireless Internet, massage, AC. Honeymoon cottage and 1st floor luxury guest room. National Register of Historic Places. 717-397-1017 or 800-747-8717.
www.kingscottagebb.com 🏠 ☆

Kromer's Bed & Breakfast S4

229 West Main Street, Ephrata, PA 17522. 717-733-7830 or 877-455-2157. www.kromersbandb.com 🏠

Lancaster County Bed & Breakfast Inns Association

800-848-2994. www.padutchinns.com 🏠

Lavender Patch Bed & Breakfast B8

190 Longenecker Avenue, Marietta, PA 17547. 717-426-4533 or 866-528-7282. www.lavenderpatch.com 🏠

Need assistance with your
travel planning and lodging?
Call I-800-PADUTCH
OR VISIT US ONLINE AT
WWW.PADUTCHCOUNTRY.COM

Lititz House Bed & Breakfast K4

301 North Broad Street, Lititz, PA 17543.
800-464-6764. www.lititzhouse.com 🏠

Lovlace Manor Bed & Breakfast G8

2236 Marietta Pike, Lancaster, PA 17603. 717-399-3275. 866-713-6384. www.lovlacemanor.com 🏠

Manheim Manor Bed & Breakfast E4

140 South Charlotte Street, Manheim, PA 17545. 717-664-4168 or 888-224-4346. www.manheimmanor.com 🏠

Meadowview Guest House N6

2169 New Holland Pike, Lancaster, PA 17601.
717-299-4017. 🏠

Mill Creek Homestead Bed & Breakfast R9

2578 Old Philadelphia Pike, Bird-in-Hand, PA 17505.
717-291-6419 or 800-771-2578.
www.millcreekhomestead.com 🏠 ☆

Mt. Gretna Inn D2

16 Kauffman Avenue, Mt. Gretna, PA 17064. 717-964-3234 or 800-277-6602. www.mtgretnainn.com 🏠

Mussers Bed & Breakfast Q14

56 Main Street, P.O. Box 26, New Providence, PA 17560.
717-786-8974. www.mussersbedandbreakfast.com 🏠

O'Flaherty's Dingeldein House Bed & Breakfast L9

1105 East King Street, Lancaster, PA 17602. 717-293-1723 or 800-779-7765. www.dingeldeinhouse.com 🏠

Old Road Guest Home R9

2501 Old Philadelphia Pike, Smoketown, PA 17576.
717-393-8182. www.olderoadguesthome.com 🏠

Olde Homestead Suites V8

3515B West Newport Road, Ronks, PA 17572.
717-768-3300. www.oldehomesteadsuites.com 🏠

The Olde Square Inn C6

127 East Main Street, Mount Joy, PA 17552. 717-653-4525. 1-800-742-3533. www.oldsquareinn.com 🏠 🐾

Pheasant Run Farm Bed & Breakfast K14

200 Marticville Road, Lancaster, PA 17603. 717-872-0991. www.pheasantrunfarmbb.com 🏠

Rocky Springs Bed & Breakfast L10

1441 Millport Road, Lancaster, PA 17602. 717-509-6800. 1-800-611-4647. www.rockyspringsbnb.com 🏠

Rose Garden Bed & Breakfast Q13

1566 Lime Valley Road, Strasburg, PA 17579.
717-687-3651. www.rosegardenbedandbreakfast.com 🏠

Rose Manor Bed & Breakfast F4

124 South Linden Street, Manheim, PA 17545. 717-664-4932 or 800-666-4932. www.rosemanor.net 🏠 🐾

The Secret Garden Bed & Breakfast K9

445 West Chestnut Street, Lancaster, PA 17603.
717-399-9229. www.secretgardenpa.com 🏠

Sheep Hill Bed & Breakfast and Antique Shop Y6

1322 Sheep Hill Road, East Earl, PA 17519. 717-354-3146 or 800-557-7750. www.sheephillbandb.com 🏠 🐾

Stony Hill Barn Bed & Breakfast S14

216 Stony Hill Road, Quarryville, PA 17566.
717-786-4337. www.stonyhillbarn.com 🏠

STRASBURG VILLAGE INN S13



Centre Square, 1 West Main Street, Strasburg, PA 17579. A B&B inn. 10 elegant "Williamsburg" rooms with private baths, 2 Jacuzzis®. Near Strasburg RR. Adjacent to Strasburg Country Store and Creamery. CTV, AC, MC, V, AX, D. 717-687-0900 or 800-541-1055. www.strasburg.com 🏠

Susquehanna Manor Bed & Breakfast B7

3272 Maytown Road, Marietta, PA 17547.
1-866-446-6225. www.susquehannamanor.com 🏠

Tea Kettle Inn Bed & Breakfast F4

457 South Main Street, Manheim, PA 17545.
717-665-0171. www.teakettleinn.com 🏠

Twin Pine Manor Bed & Breakfast Q3

1934 West Main Street (Route 322), Ephrata, PA 17522.
717-733-8400 or 888-266-0099.
www.twinpinemanor.com 🏠

The Victorian Rose Bed & Breakfast C6

214 Marietta Avenue, Mount Joy, PA 17552-3106.
888-313-7494. www.thevictorianrosebandb.com

The Villa Victoria Bed & Breakfast N6

1383 East Oregon Road, Lititz, PA 17543.
717-656-3084. www.thevillavictoria.com 🏠

Walnut Lawn Bed and Breakfast P12

1027 Village Road, Lancaster, PA 17602. 717-464-1382.
www.walnutlawn.com 🏠

West Ridge Guest House LLC A5

1285 West Ridge Road, Elizabethtown, PA 17022.
717-367-7783 or 877-367-7783.
www.westridgebandb.com 🏠

White Oak Bed and Breakfast S13

958 Eisenberger Road, Strasburg, PA 17579-9735.
717-687-8585. 800-726-2287. www.whiteoakbnb.com 🏠

WORKING FARM HOMES AND FARM B&BS



ACCOMMODATIONS AT A WORKING FARM.
MORNINGS OFTEN FEATURE FARM-FRESH FARE.

A Lancaster County Farm Stay (Association)

www.afarmstay.com

Beacon Hollow Farm Guest House V8

130 Centerville Road, Gordonville, PA 17529,
717-768-8218. 🏠

Ben-Mar Farm Bed & Breakfast Z9

5721 Old Philadelphia Pike, Gap, PA 17527.
717-768-3309. www.pamall.net/benmar 🏠

Cedar Hill Farm Bed & Breakfast D6

305 Longenecker Road, Mount Joy, PA 17552.
Secluded quiet area overlooks stream. Stately historic farmhouse, birthplace of host. All private baths, whirlpool. Full breakfast, A/C. Convenient to Amish, Hershey, RenFaire. Wireless high-speed internet.
717-653-4655. www.cedarhillfarm.com 🏠 ☆

Cherry-Crest Farm U12

150 Cherry Hill Road, Ronks, PA 17572. 717-687-6843.
www.cherrycrestfarm.com 🏠

Country Gardens Farm Bed & Breakfast B6

506 Rock Point Road, Mount Joy, PA 17552. Featured in *Family Fun* magazine. Fun on the farm. Feed chickens, sheep, goats, kittens. Gather eggs. Hayride, swings. Relax on porch rockers, enjoy view. Bountiful homemade breakfast. Private baths. Air conditioning.
717-426-3316. www.thecountrygardensfarm.com 🏠

Country Log House Farm C6

1175 Flory Road, Mount Joy, PA 17552. 717-653-4477.
www.countryloghouse.com 🏠

Country View PA Bed & Breakfast Y9

5463 Old Philadelphia Pike, Kinzers, PA 17535.
717-768-0936. www.countryviewpa.com 🏠

Country Vistas Bed & Breakfast E5

448 West Sun Hill Road, Manheim, PA 17545.
717-664-2931. www.countryvistas.net 🏠

Eby's Pequea Farm Bed & Breakfast V11

345 Belmont Road, Gordonville, PA 17529.
717-768-3615. www.frontiernet.net/~ebyfarm 🏠 ☆

Equestrian Estates

Horse Farm Bed & Breakfast L12

221 Shultz Road, Lancaster, PA 17603. Featured on TV Best of America by Horseback. It's your Fantasy Getaway! Romantic suites with 2-person Jacuzzis, rooms for families. Carriage House. Sumptuous breakfast. Sunday Church in our barn. Gazebo, streams, horses, mini-cart rides, kittens. CTV, AC, PC. 717-464-2164 or 717-464-1345. www.equestrianbnb.com 🏠

Green Acres Farm Bed & Breakfast D6

1382 Pinkerton Road, Mount Joy, PA 17552.
Kittens, goats, sheep, donkeys, playhouse and barn. Trampoline, swings, hay wagon rides, gather the eggs, private baths, full farm breakfast. Amish information. AC. Year round. 717-653-4028.
www.thegreenacresfarm.com 🏠 🐾

Want up-to-date
information about local
events? Sign up for our
eTravelGuide

AT
www.PADUTCHCOUNTRY.COM

Iron Stone Acres Bed & Breakfast Z5

344 South Pool Forge Road, Narvon, PA 17555.
717-354-8547. 🏠

Jonde Lane Farm E5

1103 Auction Road, Manheim, PA 17545. Mennonite couple invites you to share life on 1859 farm with a variety of animals! Hands-on! Family-friendly! Quiet peaceful setting. Covered bridge, walking trail nearby. Hot farm breakfast. AC, MC, V, PC, C. 717-665-4231. www.pamall.net/jondelane 🏠

Landis Farm F6

2048 Gochlan Road, Manheim, PA 17545.
717-898-7028. www.landisfarm.com 🏠

Meadow View K Farm Guest House D6

612 Eby Chiques Road, Mount Joy, PA 17552. Enjoy a family stay in a beautiful Colonial stone guest house with three bedrooms, bath, family room, and kitchen. Milk a cow, feed calves, gather eggs, play with miniature horse. AC, CTV, PC. 717-653-9793. www.meadowviewkfarm.com 🏠

Neffdale Farm V13

604 Strasburg Road, Paradise, PA 17562.
717-687-7837. www.800padutch.com/neffdale.html 🏠

The Old Summer House Bed & Breakfast Y5

1294 Weaverland Road, East Earl, PA 17519. 717-445-8422. www.800padutch.com/oldsummer.html 🏠

Olde Fogie Farm Bed & Breakfast A7

106 Stackstown Road, Marietta, PA 17547.
877-OLDFOGIE. www.oldefogiefarm.com 🏠

The Olde Stone Guesthouse Z13

1599 Swan Road, Atglen, PA 19310. 610-593-5572.
888-642-9107. www.oldestoneguesthouse.com 🏠★

Penn's Valley Farm and Inn G6

6182 Metzler Road, Manheim, PA 17545.
717-898-7386. www.pennsvalleyfarm.com 🏠

RAYBA ACRES FARM V12



183 Black Horse Road, Paradise, PA 17562. Clean, quiet rooms on a family dairy farm just minutes from everything. Motel-type units; private baths, private entrances. King/queen beds. Farm animals; milk a cow! AC, TV, coffee, phones, refrigerators. 717-687-6729. V, MC, D. www.raybaacres.com 🏠

Rocky Acre Farm Bed & Breakfast C6

1020 Pinkerton Road, Mount Joy, PA 17552. Enjoy the dairy farm! Milk a cow, feed a calf, gather eggs, pet sheep, goats, kittens, ride a pony, fish, boat or bike. Even a playhouse, train and tractor rides. Relax on spacious porch. Farm breakfast. Private bath. AC. 717-653-4449. www.rockyacre.com 🏠

September Farm Bed & Breakfast Z6

460 Mill Road, Honeybrook, PA 19344. 610-273-2267.
www.septfarm.com 🏠

Smucker's Farm Guest House W7

484 Peters Road, New Holland, PA 17557.
717-354-6879. 🏠

Starlit Acres Amish Farm Bed & Breakfast X9

4021-B Old Philadelphia Pike, Gordonville, PA 17529.
717-768-3774. 🏠

Stone Haus Farm Bed & Breakfast D5

360 South Esbenshade Road, Manheim, PA 17545.
717-653-8444. www.afarmstay.com/stone/ 🏠

Verdant View Farm Bed & Breakfast T12

429 Strasburg Road, Paradise, PA 17562. Charming 1896 farmhouse, 5 rooms, 3 with private bath. Also cozy "Little White House;" full kitchen, 3 private baths, CTV/VCR. Milk cows, feed calves, hike 118 acres by Strasburg RR, fish, bike, attend Mennonite service. Shopping nearby. Refrigerator. AC, C, PC. 717-687-7353. 888-321-8119. www.verdantview.com 🏠★

Vogt Farm Bed & Breakfast B6

1225 Colebrook Road, Marietta, PA 17547.
800-854-0399. www.vogtfarmbnb.com 🏠★

HOW TO LOCATE PROPERTIES ON THE MAP

- 📍 Information Centers
- 🚗 Service Stations/Car Wash
- ★ Attractions, Sightseeing/Tours
- ▲ Campgrounds
- 🛍️ Shops, Markets, and Outlets
- ✂️ Restaurants
- 🏠 Lodging
- 🏥 Hospitals
- 🏠 Retirement Communities
- 📖 Libraries
- Transportation
- Educational Facilities
- ★ Lancaster County Heritage
- 💰 Banks
- 🏠 Pet Friendly
- 🏌️ Golf
- 🚗 Transportation Services
- 🚌 Bus Information Center
- ✈️ Airports
- 🚆 Train Stations

Handicap Facilities —

We suggest you contact the businesses you are planning to visit to be sure they can accommodate your individual needs.

MC—Master Card, V—Visa, D—Discover, AX—American Express, DC—Diner's Club, CB—Carte Blanche, PC—Personal Checks, MAC—Debit Card, AC—Air Conditioning, DR—Dining Room, CTV—Color TV, CCTV—Color Cable TV, B—Bar, C—Cribs, P—Pets, EWS—Electric, Water, Sewer

A1—Z19 Refers to map location



ACCOMMODATIONS AT A FARM.
MORNINGS OFTEN FEATURE FARM-FRESH FARE.

Hillside Farm Bed & Breakfast E6

607 Eby Chiques Road, Mount Joy, PA 17552. 717-653-6697 or 1-888-249-3406. www.hillsidefarmbandb.com 🏠★



ALL THE COMFORTS OF HOME
IN "GUEST QUARTERS" ALL YOUR OWN.

Amish Country View Guest House S13

832 May Post Office Rd., Strasburg, PA 17579. Situated on 11 acres with nature trails overlooking a breathtaking view of Amish farmlands. 2 bedroom home, linens provided, w/ large deck and full kitchen. Near attractions. Perfect getaway for families and couples. CCTV, VCR and free movies. Packages available. 717-687-7179. www.amishcountryview.com 🏠

The Amish Guest House and Cottage V9

3625 East Newport Road, P.O. Box 64, Intercourse, PA 17534. 717-768-8914. www.theamishguesthouse.com 🏠

Amish Stay Vacation Home T9

2927 Old Philadelphia Pike, Bird-in-Hand, PA 17505
717-768-0999. www.intercoursepalodging.com. 🏠

Country View Tourist Home M12

1529 Eshelman Mill Road, Willow Street, PA 17584.
717-464-4884. 🏠

Das Intercourse Village Guest Haus V9

8 Queen Road, Intercourse, PA 17534. 717-768-0999.
www.intercoursepalodging.com 🏠

Gap in the Hills Guest House Y12

5251 Newport Road (Route 772), Gap, PA 17527.
717-656-0580. www.gapinthehills.com 🏠

Herstein Farm Vacation Home X8

121 North New Holland Road, Gordonville, PA 17529.
717-354-9951. www.hersteinvacation.com. 🏠

The Homeplace at Trailcrest Farm T13

4 Little Beaver Road, Strasburg, PA 17579.
717-687-0380. www.stayatthehomeplace.com 🏠

Intercourse Village Vacation Home V9

23 Queen Road, Intercourse, PA 17534. 717-768-3204.
www.intercoursevillagevacationhome.com 🏠

Laurel Inn The Hollow N15

47 Snyder Hollow Road, New Providence, PA 17560.
717-284-4795. www.laurelinnthehollow.com 🏠

Mountain Stone Manor Vacation Home GG1

945 North Route 934, Annville, PA 17003.
717-867-4137. www.mountainstonemanor.com 🏠

Patton's Country Place Z6

358 South Pool Forge, Narvon, PA 17555.
717-354-0047. www.pattonscountryplace.com 🏠

Sassafras Farms N14

633 Fieldcrest Drive, Willow Street, PA 17584.
717-464-1915. www.sassafrasfarms.com 🏠

Scenic Ridge Guest Home T13

528 Georgetown Road, Ronks, PA 17572.
717-687-8351. 🏠



Beacon Hill Camping V8

Route 772 West, Intercourse, PA 17534. Adult camping, quiet and relaxing. Minimum age 16. Walk to the Village of Intercourse. Hilltop views of Amish farms. Full hookups, shade and open sites, cabins, leashed pets, MC, V, D. Open April through October. Woodalls 4 W's. TL 7-9-9. 717-768-8775. www.beaconhillcamping.com ▲ 🐾

Berry Patch Campground Z6

P.O. Box 370, 6225 Ross Road, Honey Brook, PA 19344.
610-273-3720. www.berrypatchcampground.com ▲ 🐾

Cocalico Creek Campground R1

560 Cocalico Road, Denver, PA 17517. 717-336-2014.
www.cocalicocreekcampground.com ▲ 🐾

Country Acres Campground T10

20 Leven Road, Gordonville, PA 17529. Route 30, 2.5 miles east of Route 896. Pool, playground, full hook-up sites, Big Rig sites, Wireless Internet available. Cable TV, 50 amp, wooded tenting area, cabins, camp store, laundry, clean bathhouses, dumping station, MC, V, D. 866-675-4745. www.countryacrescampground.com ▲ 🐾

Country Haven Campground Y8

354 Springville Road, New Holland, PA 17557. On Route 897 between Routes 340 and 322. "The quiet one". Terraced levels overlooking 5 miles of Amish farmland, wooded sites, shaded by tall trees, all sites level, laundry, LP, heated bathhouse, free cable. 717-354-7926. www.countryhaven.com ▲ 🐾

Dutch Cousin Campground X2

446 Hill Road, Denver, PA 17517. 717-336-6911.
800-992-0261. www.dutchcousin.com ▲ 🐾

Elizabethtown/Hershey KOA A5

1980 Turnpike Road, Elizabethtown, PA 17022. 717-367-7718. 800-562-4774. www.campwithrusty.com ▲ 🐾

Flory's Cottages & Camping S10

99 North Ronks Road, P.O. Box 308, Ronks, PA 17572.
"Where the Amish are our neighbors." 71 open, level shaded sites with 50 amp E,W,S cable TV and phone. Spotless heated bathhouses, camp store and laundry. Family housekeeping cottages and private rooms. Year round, central location. MC, V. 717-687-6670. www.floryscamping.com ▲ 🏠 🐾

Hershey Conewago Campground B3

1590 Hershey Road (Route 743, North of Route 283), Elizabethtown, PA 17022. 717-367-1179. 866-246-1809. www.hersheyconewago.com ▲ 🐾

Lake-in-Wood Camping Resort Z3

576 Yellow Hill Road, Narvon (near Bowmansville), PA 17555. 717-445-5525. www.lakeinwoodcampground.com ▲ 🐾

Mill Bridge Village Campresort T11

South Ronks Road, Ronks, PA 17572. 717-687-8181.
800-645-2744. www.millbridge.com ▲ 🏠 🐾

Oak Creek Campground Z3

400 East Maple Grove Road, P.O. Box 128, Bowmansville, PA 17507. 800-446-8365. www.oakcreekcamp.com ▲ 🐾



OLD MILL STREAM CAMPGROUND Q10



2249 Lincoln Highway East, Lancaster, PA 17602.
Great location, great rates! Full hook-ups, modern facilities, store, pavilion, rental cars, cable. Next to Dutch Wonderland and shopping. Clean, quiet, convenient, year round. 717-299-2314. OldMillStreamCampground.com ▲ 🏠 🐾



Outdoor World Circle M Campground K12

2111 Millersville Road, Lancaster, PA 17603.
717-872-4651. www.campoutdoorworld.com ▲ 🐾

Pinch Pond Family Campground E2

3075 Pinch Road, Manheim, PA 17545. 717-665-7640 or 800-659-7640. www.pinchpond.com ▲ 🐾

Red Run Campground X4

877 Martin Church Road, New Holland, PA 17557.
717-445-4526. www.redruncampground.com ▲ 🐾

Roamers' Retreat Campground X11

5005 Lincoln Highway East, Kinzers, PA 17535.
717-442-4287 or 800-525-5605.
www.roamerscampground.com ▲ 🐾

Sill's Family Campground Y2

1906 Bowmansville Rd., P.O. Box 566, Adamstown, PA 19501.
717-484-4806. 800-325-3002. ▲ 🐾

Spring Gulch Resort Campground Y7

475 Lynch Road, New Holland, PA 17557. 717-354-3100. 866-864-8524. www.springgulch.com ▲ 🐾

Starlite Camping Resort P2

1500 Furnace Hill Road, Stevens, PA 17578.
Overlooking PA Dutch Country. Open and shaded sites. Complete family camping facilities, pool, mini-golf, tennis, recreation hall, planned activities. Super-clean restrooms. MC, V. 800-521-3599.
www.starlitecampingresort.com ▲ 🐾

Sun Valley Campground Z3

451 East Maple Grove Road, Bowmansville, PA 17507.
800-700-3370. www.sunvalleycamping.com ▲ 🐾

Tucquan Park Family Campground K17

917 River Road, Holtwood, PA 17532. 717-284-2156.
www.camptucquan.com ▲ 🐾

White Oak Campground S13

White Oak Road, P.O. Box 90, Strasburg, PA 17579.
717-687-6207. www.whiteoakcampground.com ▲ 🐾

Yogi Bear's Jellystone Park Camp Resort U16

340 Blackburn Road, Quarryville, PA 17566.
717-786-3458. www.jellystonepa.com ▲ 🐾

Save time and money by
buying your tickets online.

FIND OUT MORE AT
WWW.PADUTCHCOUNTRY.COM



Bring Your Group!

Get your FREE
Group Tour Planners Guide
Call: 1-800-220-4757

Celebrating 40 years of creating memories!



Ask about our kids stay & eat FREE packages!

It was 1966 when The Thomas' opened up a 30-unit motel on Rt. 222, known today as Willow Valley Resort and Conference Center.

Over the years, Willow Valley has been adding services and amenities to create the **Premiere Family Vacation destination in Central PA!**

Join us in celebrating our 40th anniversary in 2006 with money saving packages and specials all year long. Visit our website for more information to help you plan your trip!

342 Beautifully Appointed Guest Rooms
Award-Winning Smorgasbords ♦ Legendary Bake Shop
Indoor Waterpark ♦ Three Pools
Family Activities ♦ Horse Drawn Wagon Rides
FREE Bus Tour of the Lancaster Countryside
Golf ♦ Tennis ♦ Fitness Center ♦ Day Spa Services



Willow Valley **40** YEARS

Lancaster's Premiere Resort Destination Since 1966.

**Call 1-888-251-4379 to reserve your Willow Valley experience.
Check out our NEW website at www.willowvalley.com**



Delicious Food



Family Fun



Beautiful Country Setting



Indoor Waterpark



Amusement Park Packages

I want Hershey!



Sweeten your visit to Lancaster with a trip to **HERSHEY, THE SWEETEST PLACE ON EARTH®**. Just 30 minutes from Lancaster, Hershey is the premier family leisure getaway with something for every taste.

New for 2006, experience **REESE'S® XTREME CUP CHALLENGESM** multi-sensory laser competition at **HERSHEYPARK** and the dynamic, redesigned **Chocolate Making Tour Ride** at **HERSHEY'S CHOCOLATE WORLD®!**

SPA | GOLF | ACCOMMODATIONS | DINING | SHOPPING | HERSHEY PARK® | ZOO | GARDENS | MUSEUM | CONCERTS

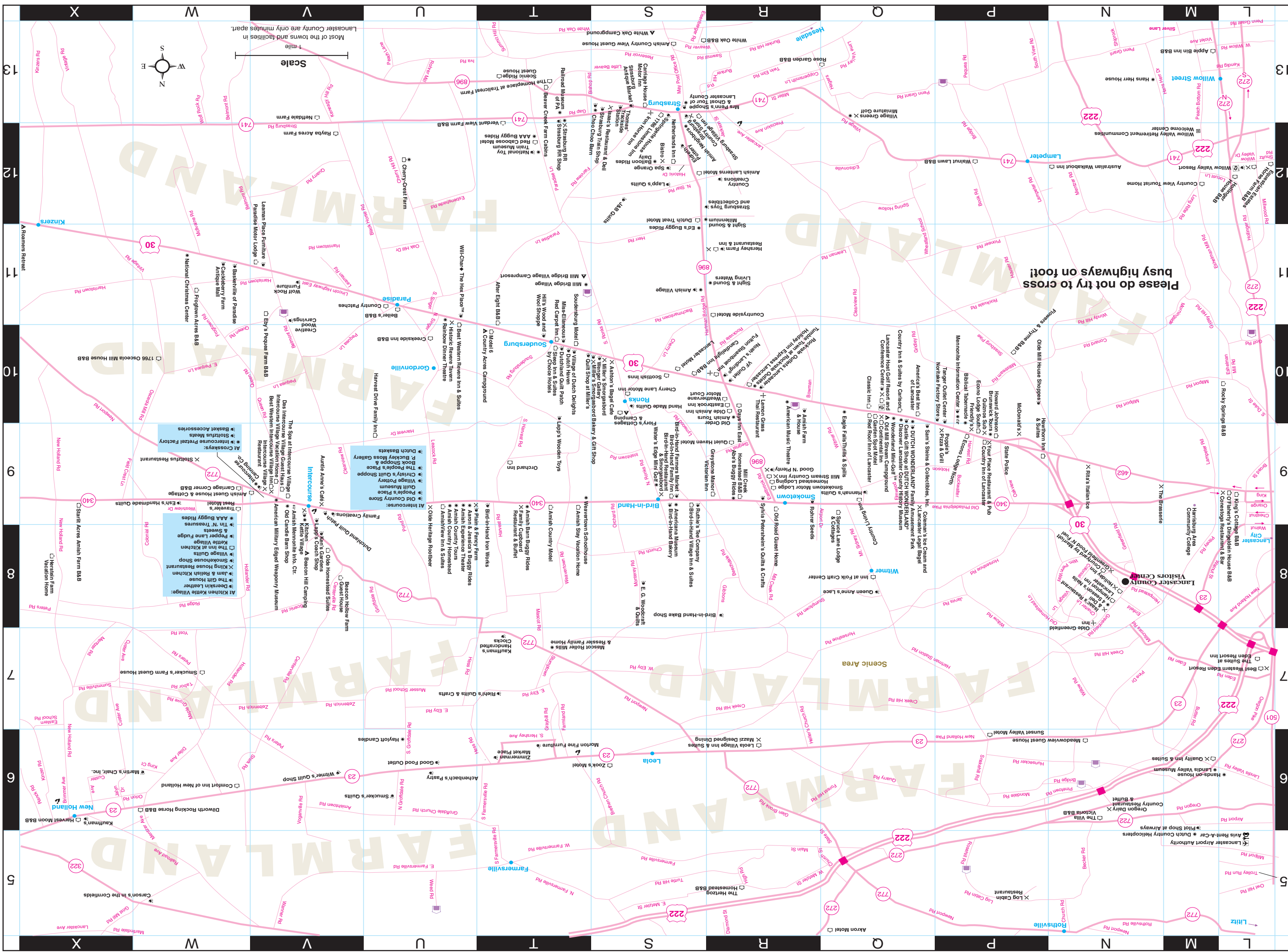
1-800-HERSHEY

HERSHEY

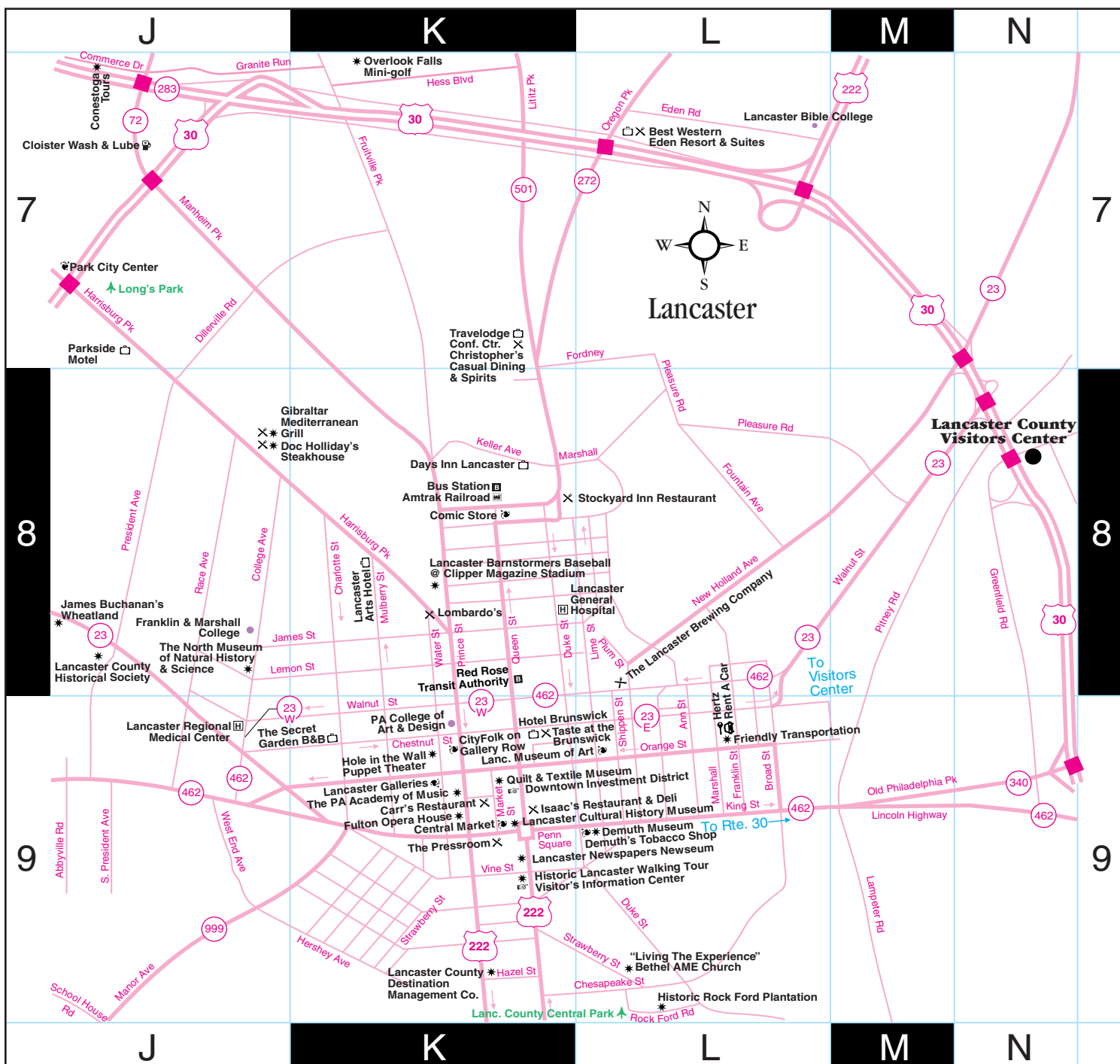
HersheyPA.com

The Sweetest Place On Earth®





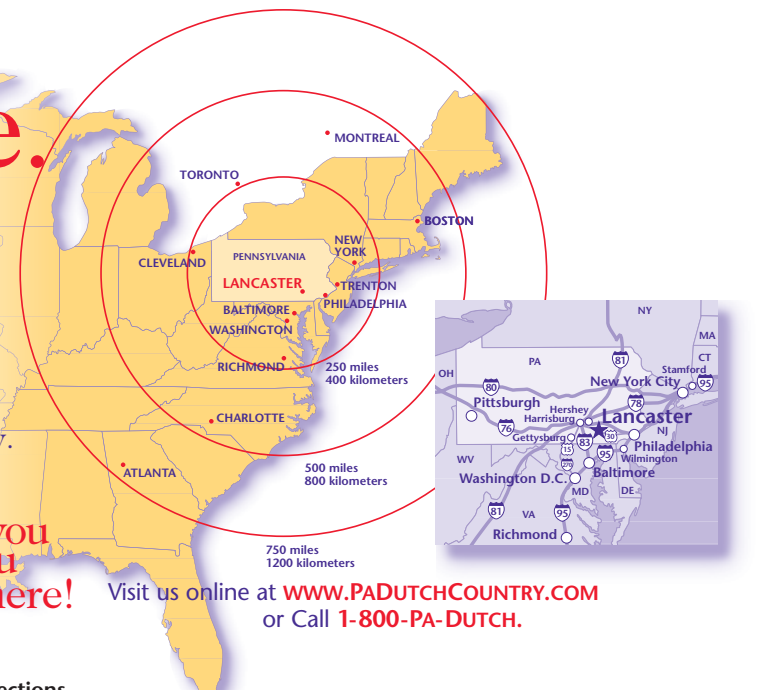
Downtown Lancaster



FREE Map

Our home is an easy, scenic drive from your home.

Lancaster County is not only a wonderful place to get away from it all, it's also an easy place to get to! We're centrally located just a short, scenic drive due west from Philadelphia or north from Baltimore. And we're close to Hershey and Gettysburg, too. So virtually all roads lead to the Heart of Pennsylvania Dutch Country.



See you when you get here!

Visit us online at www.PADUTCHCOUNTRY.COM or Call 1-800-PA-DUTCH.

Travel Information From	Approx. Distance From Lancaster	Approx. Driving Time
Baltimore, MD	73 miles	1-1/2 hrs.
Boston, MA & New England	359 miles	7 hrs.
Brooklyn & Staten Island, NY	152 miles	3-3-1/2 hrs.
Central New Jersey (Trenton, NJ)	100 miles	2 hrs.
Charlotte, NC	518 miles	9 hrs.
Cleveland, OH	363 miles	7 hrs.
Manhattan, NY	152 miles	3-3-1/2 hrs.
Philadelphia, PA	64 miles	1-1/2 hrs.
Richmond, VA	232 miles	4 hrs.
Toronto, Canada	467 miles	8 hrs.

General Directions

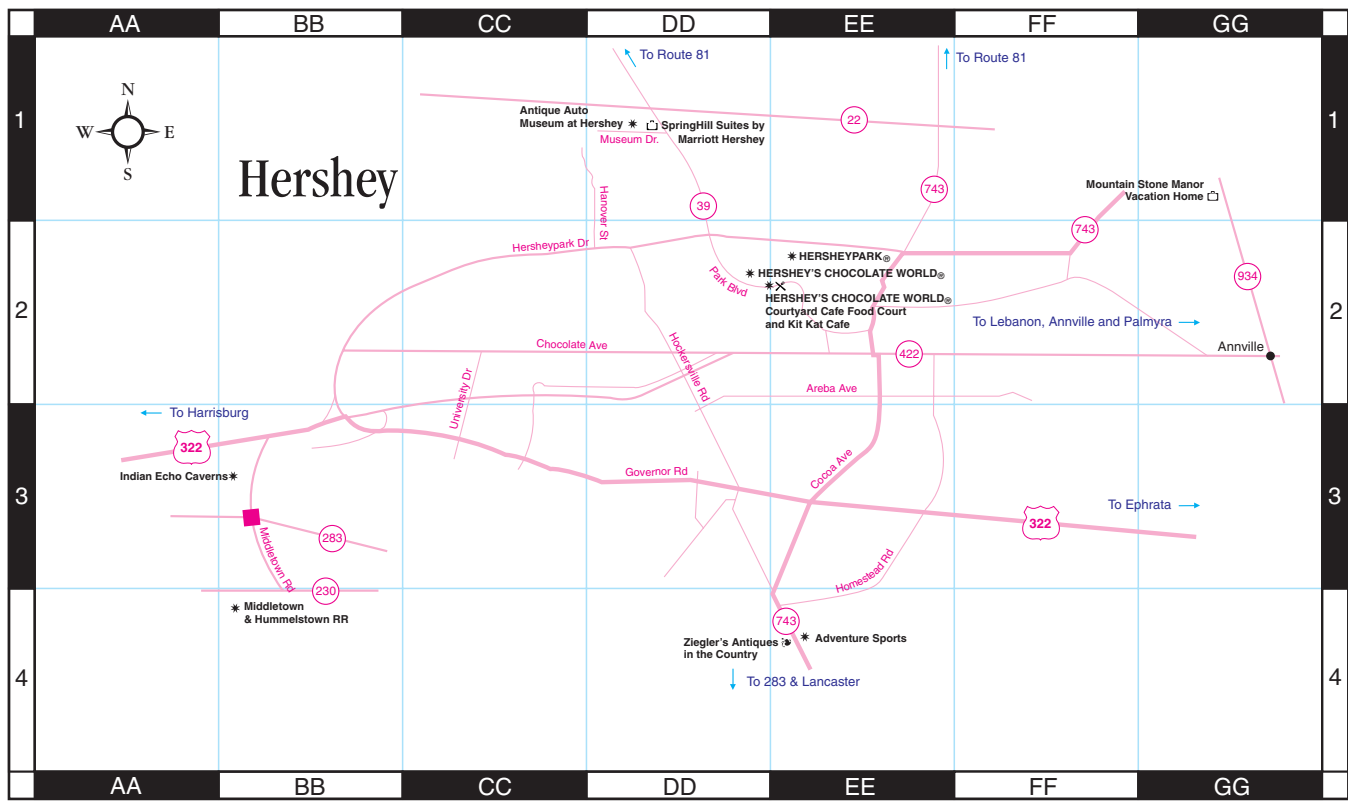
Take Interstate 83 North to Route 30 East into Lancaster County.
 Take the Massachusetts Turnpike (Interstate 90 West) to Interstate 84 West to Scranton, PA. Take Interstate 81 South to Exit 104. Take Route 501 South into Lancaster County.
 Take Interstate 278 West to Interstate 95 North. Take Interstate 78 West to Exit 13. Take Route 501 South into Lancaster County.
 Take Interstate 95 South to the Pennsylvania Turnpike (Interstate 76 West) to Exit 286. Take Route 222 South to Route 30 East into Lancaster County.
 Take Interstate 85 North to Interstate 95 North. Take Interstate 95/495 (DC Beltway) North to Interstate 695 (Baltimore Beltway). Go West on Interstate 695 to Interstate 83 North to Exit 21. Take Route 30 East into Lancaster County.
 Take Interstate 80 East to Interstate 76 West, which becomes the Pennsylvania Turnpike. Take Exit 286. Take Route 222 South to Route 30 East into Lancaster County.
 Take the Holland Tunnel to Interstate 78 West to Exit 13. Take Route 501 South into Lancaster County.
 Take Route 30 West into Lancaster County. Alternate Route: Take the Schuylkill Expressway (Interstate 76 West) to the Pennsylvania Turnpike (also Interstate 76 West) to Exit 286. Take Route 222 South to Route 30 East into Lancaster County.
 Take Interstate 95 North. Take Interstate 95/495 (DC Beltway) North to Interstate 695 (Baltimore Beltway). Go West on Interstate 695 to Interstate 83 North to Exit 21. Take Route 30 East into Lancaster County.
 Take Route 400 South to Interstate 90 East. Take Interstate 81 South to Exit 104. Take Route 501 South into Lancaster County.

MAP SPONSORED BY:



ENJOY A TOUR ALONG PRIVATE ROADS THROUGH WORKING AMISH FARMS. See our listing, page 16.

BUGGY RIDES
 www.amishbuggyrides.com



Lancaster County

The Heart of Pennsylvania Dutch Country

OFFICIAL MAP



Experience Real Amish Life.

We know you came here to see and understand how and why we live the way we do. From the moment you climb into our authentic Amish buggies you begin to experience the magic of Lancaster County. Your relaxing journey takes you through a covered bridge, down private Amish roads, and into the heart of beautiful Amish farmlands...our home.

BUDDY RIDES

www.amishbuggyrides.com

OPEN DAILY AND SUNDAYS FOR MORE INFORMATION CALL: 717-768-8828 SEE OUR LISTING, PAGE 16